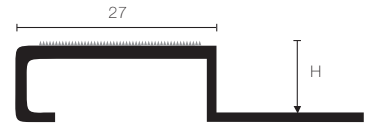
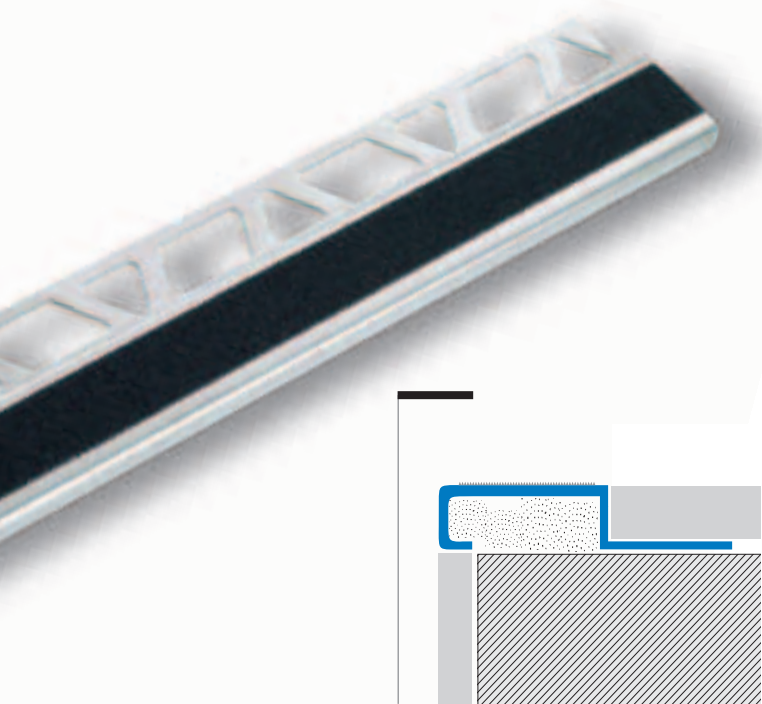


# stainless steel stair nosing with anti-slip insert

**FOLOSTAIR FI** is a technical profile especially designed to edge ceramic or porcelain stoneware tile steps. It is highly resistant and is an economic solution to the "special ceramic edge piece". Although made of steel it can still give a pleasant look to the staircase, especially in public or commercial areas. **FOLOSTAIR FI** can handle intense pedestrian transit and maintains its safety feature thanks to the carborundum anti-slip strips on its surface. Illustrated scale dimension 1:1



folostair™ FI



## FOLOSTAIR FI-IL Stainless Steel AISI 304 - DIN 1.4301

Stainless steel profile, AISI 304 standard, ensures good tolerance to most of diluted chemicals or detergents present in laboratories, food processing plants, commercial kitchens, slaughter houses, breweries and public toilets.

The anti-slip insert is supplied separately as it needs to be applied on the FI profile already installed, on a clean and dry surface.

Material: Stainless steel AISI 304  
Length: 2,70 meters

H=mm	Art.
8	FI 80 IL
10	FI 100 IL
12,5	FI 125 IL
19x18,2 m SW 19 anti-slip strip	