

Special Ceramics	4.02
Ferrum	4.12
Industria	4.16
Market	4.20

Mechanica	4.24
Mosaic	4.28
Optima	4.32





See explanation on the pages VI – VII and 9.08.



Solutions for Special Cases

Where unusual requirements have to be met, Special Ceramics from Agrob Buchtal is first choice. As a supplier of ceramic problem solutions we offer, for example, tiles for rooms in which medical lasers are used or for applications requiring the discharge of static electricity. Even for areas subject to explosion hazards such as e.g. chemical production plants, lacquer production and processing plants or munitions dumps, appropriate alternatives are available. In addition, an orientation aid for the blind according to DIN 32984 is offered, which helps blind and visually impaired persons to find their way in publicly accessible facilities.

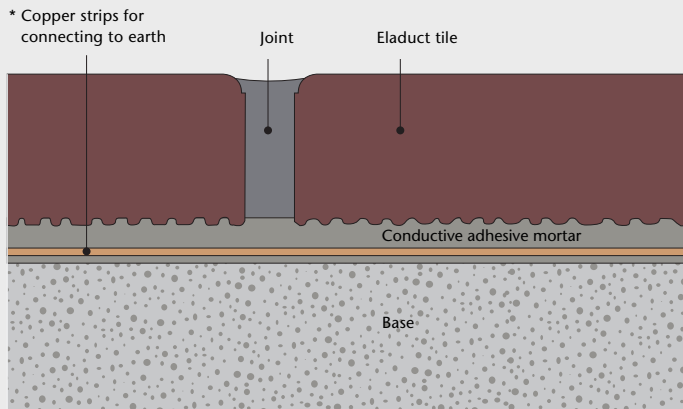


Static Electricity Conducting Stoneware Tiles, unglazed



3555
red-brown, unglazed

Sectional Drawing



* Number and arrangement depending on the technical requirements. Connection only by an electrical specialist in line with the relevant guidelines.

In the case of Eladuct, static electricity is discharged through the tile body. Electrical leakage resistance RA according to DIN EN 1081: $\leq 10^6$ Ohm.

Conductive Floor Coverings

These two specific solutions – as a stoneware tile (Eladuct) on the one hand and as a ceramic large-size panel in model size 60 x 60 cm on the other (ELA 10.6) – are suitable for use in those areas where electrostatic charge requires a conductive floor covering or where the latter is recommended. The special laying instructions must be followed carefully. We shall be delighted to advise you and to give you assistance for individual applications.

Eladuct

is especially predestined for those areas where the discharge of static electricity is desired together with the advantages of an unglazed surface (high mechanical-chemical stress resistance).

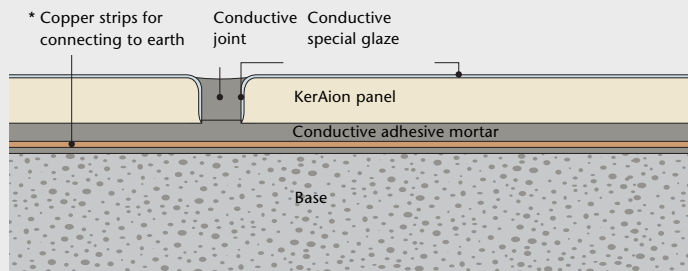
Examples: gravure and flexographic printing areas, laboratories, rooms for lacquer production, processing and decanting, munitions dumps, chemical production plants etc.

KerAion ELA 10.6



2401 RH · IV
grey, glazed
(RH = non-slip version)

Sectional Drawing



* Number and arrangement depending on the technical requirements. Connection only by an electrical specialist in line with the relevant guidelines.

In the case of ELA 10.6, static electricity is discharged via the four overglazed panel edges. Electrical leakage resistance RA according to DIN EN 1081: $\leq 10^6$ Ohm.

KerAion ELA 10.6

is recommended for those areas where the discharge of static electricity is desired and importance is attached to the advantages of a glazed surface (e.g. very easy to clean) and a generous, representative look.

Examples: office rooms, production rooms for electronic equipment, physical measuring and work rooms, laboratories, rooms for microchip and computer manufacture, medical areas (e.g. operating theatres), telecommunication workshops, sales areas for electronic equipment etc.

Floor Tiles

Skirtings

25 x 12.5 cm



25 x 8.9 cm



			1110	4000	4003	4004	Model number
			25 x 12.5 cm	25 x 8.9 cm			Nominal dimens.
			240 x 115 x 20 mm	240 x 79/9 x 11 mm	(2x) 131 x 79/9 x 11 mm	(2x) 115 x 79/9 x 11 mm	Work size
			33.00/m ²	4.00/m			m ² /m - pieces
			54.12/m ²	2.20/m	0.59/pair	0.55/pair	m ² /m/pair - kg
			13 pieces	16 pieces	8 pairs	8 pairs	Bundle - pce./pair
			0.39 m ²	4.00 m			Bundle - m ² /m
			21.32	8.80	4.72	4.40	Bundle - kg
			28.36				Pallet - m ²
			1,535.04				Pallet - kg
			R10				Slip resistance
			4				Stress group
			355S-1110	355S-4000	355S-4003	355S-4004	355S
			Price gr. 341 (m ²)	Price gr. 467 (pce.)	Price gr. 528 (pce.)	Price gr. 528 (pair)	red-brown, ungl.

In the case of Eladuct, static electricity is discharged through the tile body.
Electrical leakage resistance R_A according to DIN EN 1081: ≤ 10⁶ Ohm.



Extruded Ceramic Tiles, Precision, DIN EN 14411, group Al_b, glazed (GL)
for floor coverings in indoor and outdoor areas (static electricity conducting ceramic large-size panels)

KerAion ELA 10.6

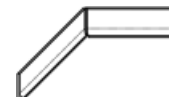
Floor Panels
(static electricity
conducting)

60 x 60 cm



Skirtings
(static electricity
non-conducting)

30 x 8.7 cm



			K100	37040	37043	37044	37042	Model number
			60 x 60 cm	30 x 8.7 cm				Nominal dimens.
			592 x 592 x 8 mm	292 x 79/12 x 8 mm	280/292 x 79/12 x 8 mm	280/292 x 79/12 x 8 mm	(2x) 292 x 79/12 x 8 mm	Work size
			2.78/m ²	3.33/m				m ² /m - pieces
			18.01/m ²	1.70/m	0.55/pieces	0.55/pieces	1.10/pair	m ² /m/pce./pair - kg
			32* pieces	32 pieces	32 pieces	32 pieces	16 pairs	Bundle - pce./pair
			11.51 m ²	9.61 m				Bundle - m ² /m
			207.36	16.32	17.60	17.60	17.60	Bundle - kg
			46.04					Pallet - m ²
			829.44					Pallet - kg
			R9					Slip resistance
			2					Stress group
			2401RH-K100					4
			Price gr. 330 (m ²)	590-37040	590-37043	590-37044	590-37042	2401RH
				Price gr. 447 (pce.)	Price gr. 459 (pce.)	Price gr. 459 (pce.)	Price gr. 490 (pair)	grey, glazed
								590
								grey, glazed

In the case of KerAion ELA 10.6, static electricity is discharged via the four overlaid panel edges.
Electrical leakage resistance R_A according to DIN EN 1081: ≤ 10⁶ Ohm.

*Each bundle consists of 8 small packaging units with 4 panels each





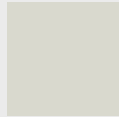
2208
blue



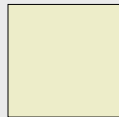
2207
green



2206
grey



2205
light-grey



2204
beige



2203
white

KerAion Special Glazes for Operating Theatres

Ideal for wall coverings in rooms where lasers are used such as e.g. operating theatres. These products perfectly meet the requirements with regard to diffusely reflecting surfaces: incident laser beams are "split up", thus preventing uncontrolled reflection. This is confirmed by the expert opinion of the Laser Medical Centre Berlin and applies to the following types of lasers normally used in medical applications:

- Argon – a typical visible laser
- Nd:YAG – a typical laser in the close-infrared range
- Excimer – a typical UV-laser
- CO₂ – a typical laser in the mid-infrared range

Special advantage of the large model size of 60 x 60 cm: reduced number of joints, therefore easy to clean and hygienic. Perfect complement for the floor: the static electricity conducting panel ELA 10.6 (see page 4.05), also in model size 60 x 60 cm.

The following series are also suitable:

- matt glazes of the series Chroma II (see page 1.06)
- matt glazes of the series Plural plus 1 and Plural plus 2 (see pages 2.06 and 2.10)

On page 9.32 in the Technical Information you find the following additional information about this mono-coloured series:

- NCS Natural Colour System
- RAL Colour Chart
- Lightness Values

4.08 Orientation Aid for the Blind

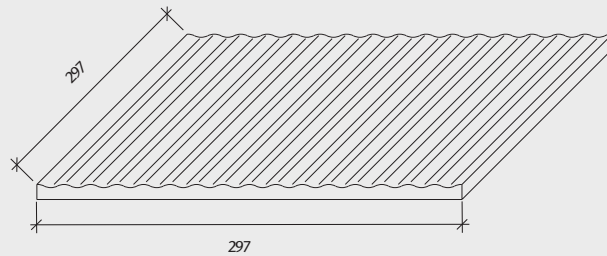
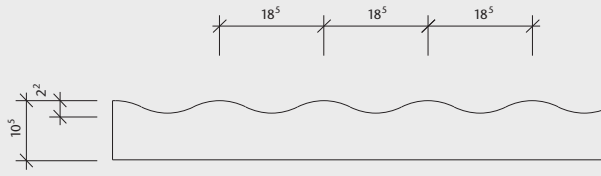


Guide tile 30 x 30 cm*
slip-resistant
according to DIN 32984

* For information and laying instructions, refer to the pages 9.17 and 9.18.



Floor tile 30 x 30 cm,
slip-resistant



The luminance contrast between colour 103 chalk and 106 graphite is 0.7 and thus clearly surpasses the requirements.

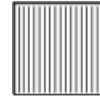


Material ConneXion, New York, Bangkok, Cologne, Milan, has awarded the Certificate of Excellence in Material Development to the orientation aid for the blind.

Guide Tile

Floor Tile

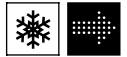
30 x 30 cm



30 x 30 cm



					30 x 30 cm	30 x 30 cm	Nominal dimens.
					297 x 297 x 10.5 mm	297 x 297 x 10.5 mm	Work size
					grooved	smooth	Surface
					3.33/m	11.11/m ²	m/m ² - pieces
					5.79/m	21.55/m ²	m/m ² - kg
					11	11	Bundle - pieces
					3.30 m	0.99 m ²	Bundle - m/m ²
					19.14	21.34	Bundle - kg
						41.58	Pallet - m ²
						896.28	Pallet - kg
					R11	R11	Slip resistance
					3	3	Stress group
					600358-103	600357-103	103
					Price gr. 449 (pce.)	Price gr. 166 (m ²)	chalk
					600358-106	600357-106	106
					Price gr. 449 (pce.)	Price gr. 166 (m ²)	graphite





Stair tile 30 x 60 cm with glass insert



Skirtings/guide strips 10 x 30 cm with glass insert

Luminescent Strips Save Lives

After a power failure or in the case of extreme smoke development, photoluminescent indicators near to ground from Agrob Buchtal show the way towards the exit. Charged by daylight or artificial light, they develop a luminance which is sufficient even after 30 min for seeing guide strips on the floor. The luminescent indicators comply with the measured values required by the Guideline BGR 216 in accordance with DIN 67510 and are used, for example, in hospitals and old people's homes, airports, underground stations or hotels. In addition to stair tiles, guide strips are available which can also be used as skirtings. As standard articles, we offer stair tiles and skirtings/guide strips from the series Geo. Individual forms and sizes with tiles from other series of the range of architectural ceramics are possible. Please contact us!

Time	Luminance
2 min	1.029 mcd/m ²
10 min	236 mcd/m ²
30 min	58 mcd/m ²



The photoluminescent indicators were awarded the innovation prize of the leading German architecture journal AIT.



Material ConneXion, New York, Bangkok, Cologne, Milan, has awarded the Certificate of Excellence in Material Development to the photoluminescent indicators.



reddot design award
honourable mention 2008

Stair Tiles

30 x 60 cm



Skirtings/
Guide Strips

10 x 30 cm



				30 x 60 cm	10 x 30 cm	Nominal dimens.
				297 x 597 x 10.5 mm	97 x 297 x 10.5 mm	Work size
				smooth, upgraded	smooth, upgraded	Surface
				1.67	3.33	m - pieces
				6.98	2.30	m - kg
				4	14	Bundle - pieces
				2.40	4.20	Bundle - m
				16.72	9.66	Bundle - kg
						Pallet - m
						Pallet - kg
				R10/A	R10/A	Slip resistance
				432980	432982	
				Price gr. 618 (pce.)	Price gr. 528 (pce.)	anthracite
				432981	432983	
				Price gr. 618 (pce.)	Price gr. 528 (pce.)	grey




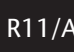
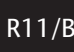
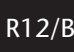




Working on Solid Ground

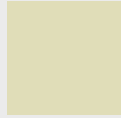
This series stands for integrally coloured, unglazed split tiles, which have proved to be a reliable floor covering for industrial and commercial applications for decades. Ferrum is extremely stress-resistant, durable, robust and hard-wearing. The classic rectangular size of 25 x 12.5 cm is available in three thicknesses, so that one can choose the appropriate version according to the respective weight requirements.

4.14 Ferrum

 R10/A  R11/A  R11/B  R12/B



902
grey-white



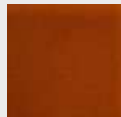
900
grey-beige



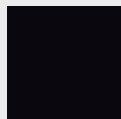
929
stone-grey



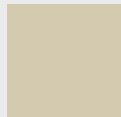
950
colorado-brown



958
brick-red



984
anthracite



989
mid-grey



Floor tile 25 x 12.5 cm



Nosing tile
25 x 12.5 cm

Cove skirting, $r = 12$ mm,
25 x 12.5 cm

External angle,
mitred pair



Internal angle,
mitred pair

Floor Tiles

25 x 12.5 cm



25 x 12.5 cm



25 x 12.5 cm



			11 mm thick	14 mm thick	20 mm thick	
			1100	1160	1110	Model number
			25 x 12.5 cm	25 x 12.5 cm	25 x 12.5 cm	Nominal dimens.
			240 x 115 x 11 mm	240 x 115 x 14 mm	240 x 115 x 20 mm	Work size
			33.00	33.00	33.00	m ² - pieces
			22.77	28.38	40.26	m ² - kg
			24	20	14	Bundle - pieces
			0.73	0.61	0.42	Bundle - m ²
			16.56	17.20	17.08	Bundle - kg
			52.36	43.64	30.55	Pallet - m ²
			1,192.32	1,238.40	1,229.76	Pallet - kg
			see below	R12/B	see below	Slip resistance
			2	3	4	Stress group
			R10/A 900-1100 Price gr. 107 (m ²)		R10/A 900-1110 Price gr. 151 (m ²)	900 grey-beige
			R12/B 902-1100 Price gr. 107 (m ²)	R12/B 902-1160 Price gr. 127 (m ²)	R12/B 902-1110 Price gr. 151 (m ²)	902 grey-white
			R12/B 929-1100 Price gr. 119 (m ²)			929 stone-grey
					R11/B 950-1110 Price gr. 151 (m ²)	950 colorado-brown
					R11/A 958-1110 Price gr. 151 (m ²)	958 brick-red
			R12/B 984-1100 Price gr. 119 (m ²)			984 anthracite
			R12/B 989-1100 Price gr. 119 (m ²)			989 mid-grey

Skirtings

25 x 12.5 cm



Nosing Tile

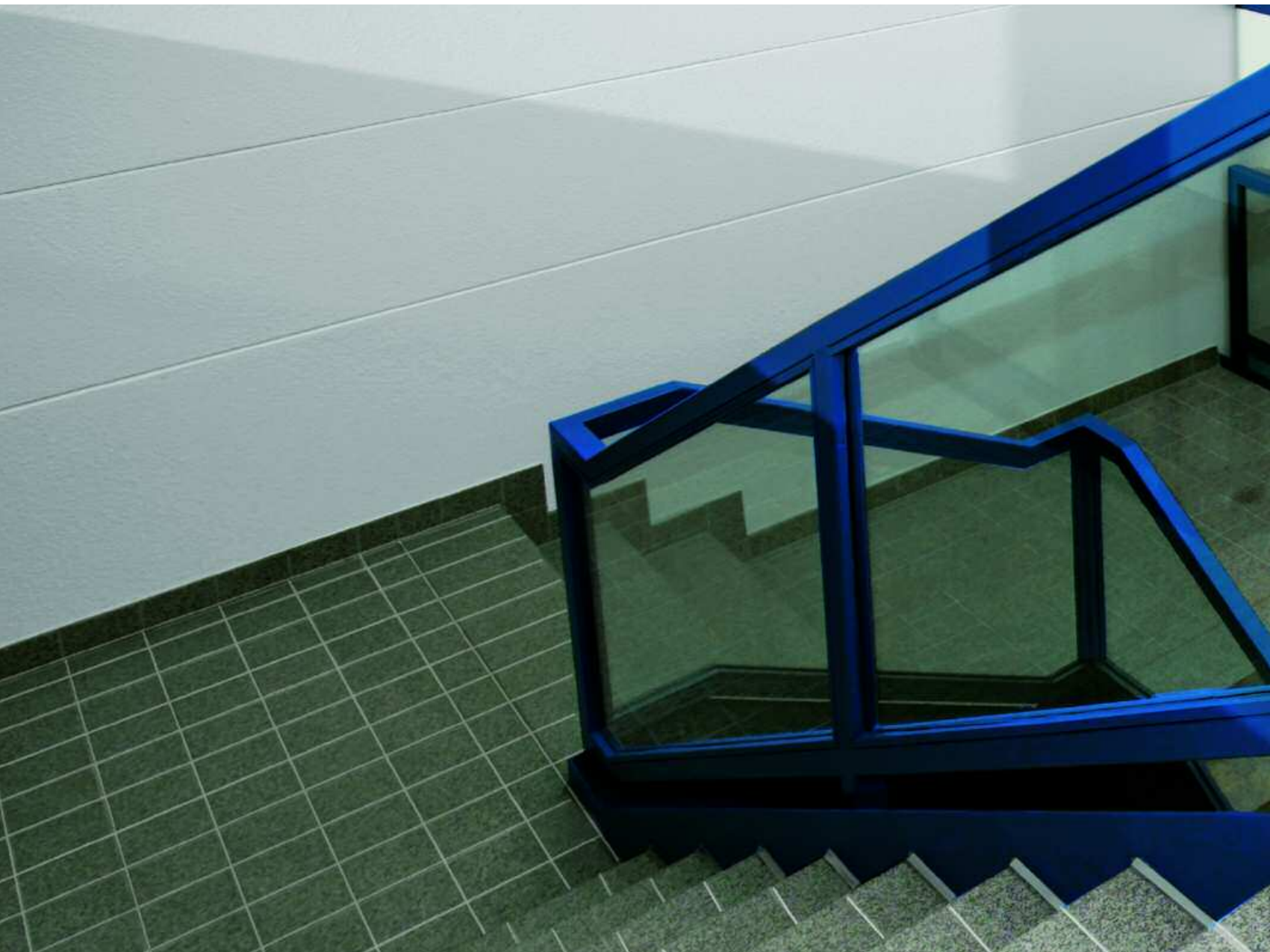
25 x 12.5 cm



			Cove skirting, r = 25 mm	External angle	Internal angle	
			4030	4033	4034	4822
			25 x 12.5 cm			25 x 12.5 cm
			240 x 125/20 x 11 mm			240 x 115/52 x 11
			4.00			4.00
			3.52/m	0.20/pieces	0.17/pieces	3.88/m
			14	4	8	8
			3.50			2.00
			12.32	0.80	1.36	7.76
						see below
			900-4030 Price gr. 435 (pce.)	900-4033 Price gr. 446 (pce.)	900-4034 Price gr. 446 (pce.)	R10/A 900-4822 Price gr. 434 (pce.)
			902-4030 Price gr. 435 (pce.)	902-4033 Price gr. 446 (pce.)	902-4034 Price gr. 446 (pce.)	R12/B 902-4822 Price gr. 434 (pce.)
			929-4030 Price gr. 435 (pce.)	929-4033 Price gr. 446 (pce.)	929-4034 Price gr. 446 (pce.)	R12/B 929-4822 Price gr. 434 (pce.)
			984-4030 Price gr. 435 (pce.)	984-4033 Price gr. 446 (pce.)	984-4034 Price gr. 446 (pce.)	R12/B 984-4822 Price gr. 434 (pce.)
			989-4030 Price gr. 435 (pce.)	989-4033 Price gr. 446 (pce.)	989-4034 Price gr. 446 (pce.)	R12/B 989-4822 Price gr. 434 (pce.)

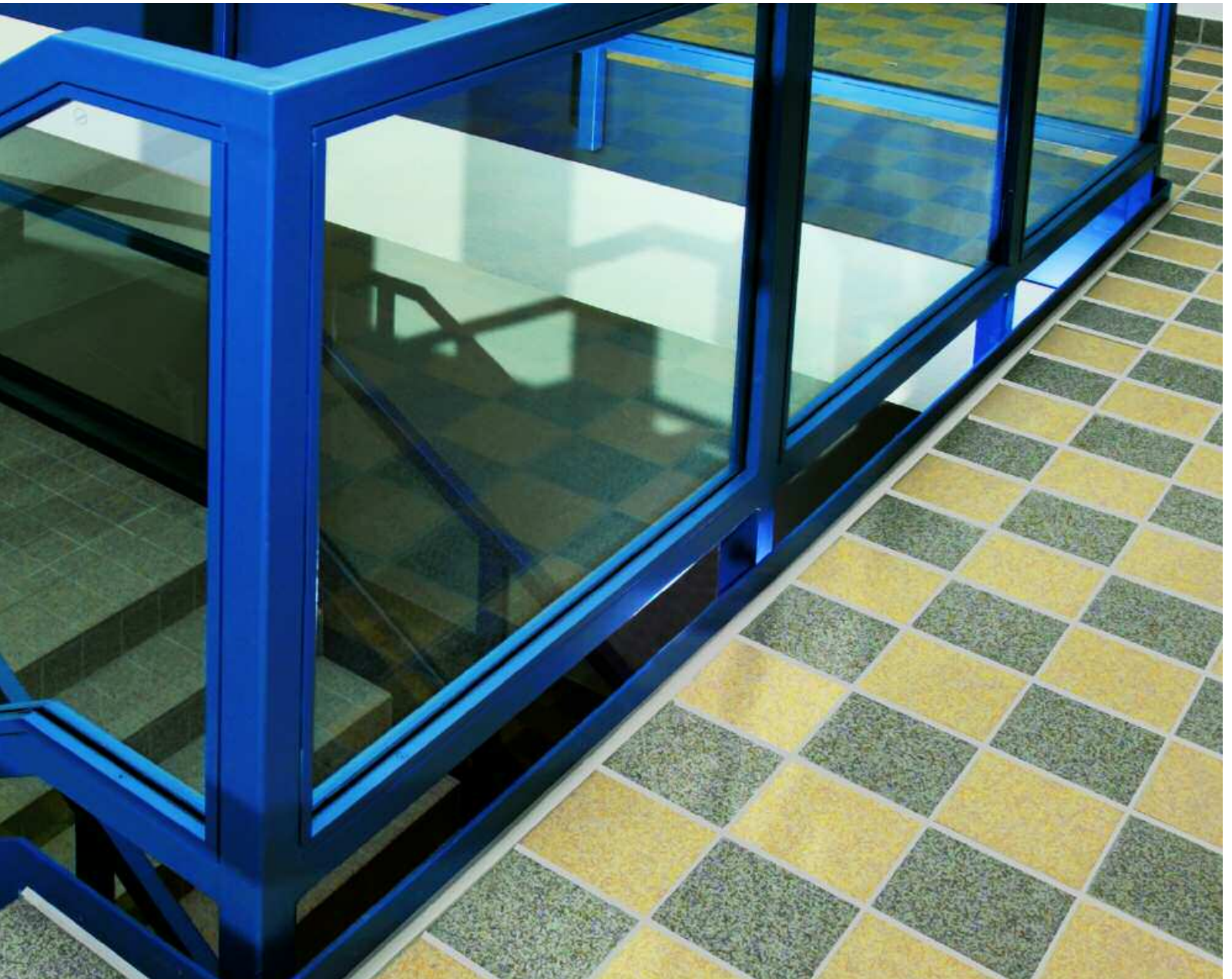
For gutter tiles (trough depth 15 mm), see System Chroma/Special tiles on page 1.68
*Exception: Colour no. 950, 958 and 984 correspond to the DIN EN 14411, group AI_A.

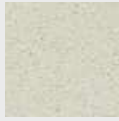




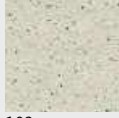
For Extreme Conditions

Industria is the recommended solution for areas characterized by increased risk of slipping, extreme stress and high loads. This series is tailor-made for the special requirements of industry and trade. The diverse surface variants cover the whole range of slip-resistance values: from R10 up to the highest class R13V10. In this way, Industria ensures safety even under most adverse conditions.





001
white



103
chalk



045
grey-porphyr



Floor/wall tile
15 x 15 cm



smooth



Optistic



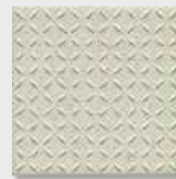
Fine-grained



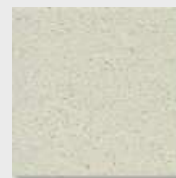
Opticom



Picstic



Coarse checkered tile



Roughened



Kombicorn



Skirting with Bevel
10 x 15 cm



Cove Skirting
10 x 15 cm



Internal angle
10 cm high



External angle
10 cm high

Floor Tiles



	<i>smooth</i>	<i>Optistic</i>	<i>Fine-grained</i>	<i>Opticom</i>	<i>Picstic</i>	<i>Kombicorn</i>
	15 x 15 cm	15 x 15 cm	15 x 15 cm	15 x 15 cm	15 x 15 cm	15 x 15 cm
	150 x 150 x 11 mm	150 x 150 x 11 mm	150 x 150 x 11 mm	150 x 150 x 11 mm	150 x 150 x 11 mm	150 x 150 x 11 mm
	smooth	profiled	fine-grained	profiled	profiled	profiled
	44.00	44.00	44.00	44.00	44.00	44.00
	23.32	24.64	22.44	24.64	24.64	26.40
	22	22	22	22	21	21
	0.50	0.50	0.50	0.50	0.48	0.48
	11.66	12.32	11.22	12.32	11.76	12.60
	49.00	49.00	49.00	49.00	46.77	46.77
	1,142.68	1,207.36	1,099.56	1,207.36	1,152.48	1,234.80
	R10/A	R11/B	R12	R12V4	R12V8	R13V10
	2 - 3	2	2	2	2	2
	430153 Price gr. 156 (m ²)	436810 Price gr. 186 (m ²)	431445 Price gr. 186 (m ²)	430151 Price gr. 186 (m ²)	436811 Price gr. 186 (m ²)	436812 Price gr. 186 (m ²)

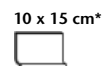
Nominal dimens.
Work size
Surface
m ² - pieces
m ² - kg
Bundle - pieces
Bundle - m ²
Bundle - kg
Pallet - m ²
Pallet - kg
Slip resistance
Stress group
045 grey-porphyr



Floor Tiles



Cove Skirting



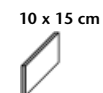
Internal Angle for Cove Skirting



External Angle for Cove Skirting



Skirting with Bevel



<i>Roughened</i>	<i>Coarse checkered tile</i>		10 x 15 cm*			10 x 15 cm
15 x 15 cm	15 x 15 cm		10 x 15 cm*			10 x 15 cm
147 x 147 x 9 mm	147 x 147 x 9 mm		102 x 150 x 9 mm	102 x 30 mm	102 x 30 mm	97.5 x 150 x 10.5 mm
roughened, upgraded	profiled, upgraded		smooth	smooth	smooth	smooth
44.00/m ²	44.00/m ²		6.67/m	0.08/pieces	0.09/pieces	6.67/m
21.56/m ²	18.92/m ²		2.53/m			2.73/m
25	25		24	18	12	20
0.57 m ²	0.57 m ²		3.60 m			3.00 m
12.25	10.75		9.12			8.20
55.68	55.68					
1,200.50	1,053.50					
R13	R13V10					
2	2					
431141 Price gr. 96 (m ²)			435082** Price gr. 418 (pce.)	435182** Price gr. 425 (pce.)	435882** Price gr. 425 (pce.)	432103** Price gr. 416 (pce.)
	432404 Price gr. 96 (m ²)					

PT	
Nominal dimens.	
Work size	
Surface	
m ² /m - pieces	
m ² /m/pce. - kg	
Bundle - pieces	
Bundle - m ² /m	
Bundle - kg	
Pallet - m ²	
Pallet - kg	
Slip resistance	
Stress group	
001 white	
045 grey-porphyr	
103 chalk	

* For details, refer to page 9.16.
**Without Protecta upgrading





A Robust Basis for Good Sales

The floor tiles of the series Market were specially designed for the so-called laying by the vibration method. In the case of this special method the mortar bed is uniformly and intensively compacted after placing the tiles. In this way, the floor covering not only becomes highly resistant to mechanical stress, but also economical thanks to its longevity. Moreover, the rapid laying by the vibration method saves time both in new buildings and at renovation, and the homogeneous surface with a minimum portion of joints is easy to clean. Apart from the laying by the vibration method, however, conventional laying of the unglazed porcelain stoneware tiles is also possible. Great food store chains have used Market with great success for many years.

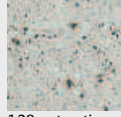




103 chalk micro



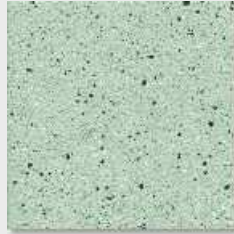
125 white vario rosé



128 antarctic



smooth, R9
20 x 20 cm



stucco-structure, R10
20 x 20 cm



Quarry stone, R11
20 x 20 cm



Softcorn, R11
20 x 20 cm



Fine-grained, R12
20 x 20 cm



Checkered tile, R12V4
20 x 20 cm



<i>smooth</i>	<i>stucco-structure R10</i>	<i>Quarry stone R11</i>	<i>Softcorn R11</i>	<i>Fine-grained R12</i>	<i>Checked tile R12V4</i>	
20 x 20 cm	20 x 20 cm	20 x 20 cm	20 x 20 cm	20 x 20 cm	20 x 20 cm	Nominal dimens.
197 x 197 x 15 mm	197 x 197 x 15 mm	197 x 197 x 15 mm	197 x 197 x 15 mm	197 x 197 x 15 mm	197 x 197 x 15 mm	Work size
smooth, upgraded	structured, upgraded	structured, upgraded	grained, upgraded	fine-grained, upgraded	profiled, upgraded	Surface
25.00	25.00	25.00	25.00	25.00	25.00	m ² - pieces
33.25	33.25	33.25	34.50	33.25	33.25	m ² - kg
14	14	14	14	14	13	Bundle - pieces
0.56	0.56	0.56	0.56	0.56	0.52	Bundle - m ²
18.62	18.62	18.62	18.62	18.62	17.29	Bundle - kg
33.60	33.60	33.60	33.60	33.60	31.20	Pallet - m ²
1,117.20	1,117.20	1,117.20	1,117.20	1,117.20	1,037.40	Pallet - kg
R9	R10	R11	R11	R12	R12V4	Slip resistance
4	4	4	4	4	3 - 4	Stress group
436456 Price gr. 181 (m ²)						103 chalk micro
436457 Price gr. 173 (m ²)	435002 Price gr. 173 (m ²)	435104 Price gr. 183 (m ²)		436788 Price gr. 192 (m ²)	436794 Price gr. 196 (m ²)	128 antarctic
436825 Price gr. 173 (m ²)			436781 Price gr. 183 (m ²)	436787 Price gr. 192 (m ²)	436793 Price gr. 196 (m ²)	125 white vario rosé







Tiles with Motor Vehicle Licence

Mechanica was specially developed for floors exposed to extreme stress. With slip resistances from R10 to R12V4 as well as a ceramic safety border for inspection pits, this series is perfectly suitable for garages, car-washes and the like. Adjoining functional areas can also be designed with these tiles. In this way, integral concepts can be realized from the reception to the spare parts store right through to the showroom. Mechanica is available in the typical size of 10 x 20 cm. For the use in representative premises, the tiles are also offered in the size of 30 x 30 cm.

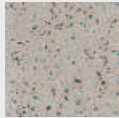




241
grey micro



242
anthracite micro



251
grey macro



252
anthracite macro



255
red macro



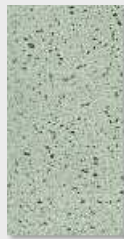
Smooth, 30 x 30 cm, R10



Smooth, R10
10 x 20 cm



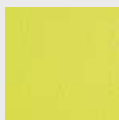
Grained, R11
10 x 20 cm



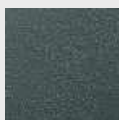
Fine-grained, R12
10 x 20 cm



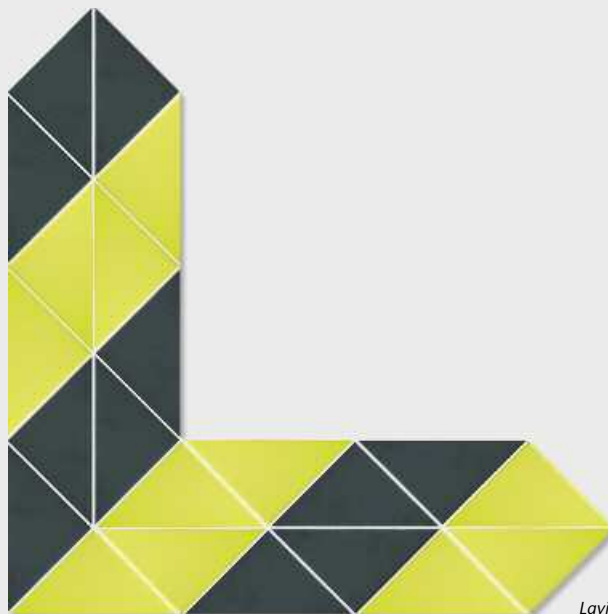
Checkered tile, R12V4
10 x 20 cm



yellow



black



Laying example of ceramic safety border

Floor Tiles

Safety Border

10 x 20 cm



10 x 20 cm



10 x 20 cm



10 x 20 cm



27.8 x 20 cm



	Smooth	Grained	Fine-grained	Checked tile R12V4	Fine-grained	
	10 x 20 cm	10 x 20 cm	10 x 20 cm	10 x 20 cm	27.8 x 20 cm	Nominal dimens.
	97 x 197 x 15 mm	97 x 197 x 15 mm	97 x 197 x 15 mm	97 x 197 x 15 mm	278 x 197/197 x 15 mm	Work size
	smooth, upgraded	fine-grained, upgraded	fine-grained, upgraded	profiled, upgraded	fine-grained, upgraded	Surface
	50.00/m ²	50.00/m ²	50.00/m ²	50.00/m ²	7,00 / 14,00 ***/m	m ² /m - pieces
	33.50/m ²	33.50/m ²	33.50/m ²	33.50/m ²	9.24/m	m ² /m - kg
	28	28	28	26	28	Bundle - pieces
	0.56 m ²	0.56 m ²	0.56 m ²	0.52 m ²	2.00 m	Bundle - m ² /m
	18.76	18.76	18.76	17.42	18.48	Bundle - kg
	33.60	33.60	33.60	31.20		Pallet - m ²
	1,125.60	1,125.60	1,125.60	1,045.20		Pallet - kg
	R10	R11	R12	R12V4	R12	Slip resistance
	4	4	4	3 - 4	4	Stress group
	431241	431242	431253	431243		241
	Price gr. 115 (m ²)	Price gr. 115 (m ²)	Price gr. 205 (m ²)	Price gr. 164 (m ²)		grey micro
	431244	431245	431254	431246		242
	Price gr. 115 (m ²)	Price gr. 115 (m ²)	Price gr. 205 (m ²)	Price gr. 164 (m ²)		anthracite micro
	435014	431228	431236	436752		251
	Price gr. 138 (m ²)	Price gr. 138 (m ²)	Price gr. 205 (m ²)	Price gr. 205 (m ²)		grey macro
	435013	431229	431233	436751		252
	Price gr. 138 (m ²)	Price gr. 138 (m ²)	Price gr. 205 (m ²)	Price gr. 205 (m ²)		anthracite macro
					431321	
					Price gr. 416 (pce.)	yellow
					431320	
					Price gr. 416 (pce.)	black

*** 7.00/m in case of single-row laying
14.00/m in case of double-row laying
(see laying example on page 4.26)



Floor/Wall Tiles

30 x 30 cm



Skirting, Cut

7.5 x 30 cm



Stair Tile

30 x 30 cm



	30 x 30 cm	7.5 x 30 cm	30 x 30 cm	
	297 x 297 x 8.5 mm	75 x 297 x 8.5 mm	297 x 297 x 8.5 mm	Nominal dimens.
	smooth, upgraded	smooth, upgraded	smooth, upgraded	Work size
	11.11/m ²	3.33/m	3.33/m	Surface
	18.78/m ²	1.37/m	5.49/m	m ² /m - pieces
	12	50	12	m ² /m - kg
	1.08 m ²	15.02 m	3.60 m	Bundle - pieces
	20.28	20.50	19.80	Bundle - m ² /m
	51.85			Bundle - kg
	973.44			Pallet - m ²
	R10		R10	Pallet - kg
	2			Slip resistance
	436501	437170	437220	Stress group
	Price gr. 83 (m ²)	Price gr. 419 (pce.)	Price gr. 446 (pce.)	251
	436502	437171	437221	grey macro
	Price gr. 83 (m ²)	Price gr. 419 (pce.)	Price gr. 446 (pce.)	252
	436505	437172	437222	anthracite macro
	Price gr. 107 (m ²)	Price gr. 419 (pce.)	Price gr. 452 (pce.)	255
				red macro





Small Size, Great Effect

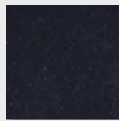
Thanks to its non-slip properties (R10/B), the series Mosaic is predestined for use e.g. in sanitary facilities. The moisture-resistant net on the reverse side of the unglazed porcelain stoneware tiles is also suitable for this area of application. The size of 5 x 5 cm is not only aesthetic, but also practical, e.g. as regards the execution of slopes towards outlets.



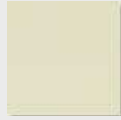
4.30 Mosaic



white



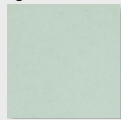
black



light-cream



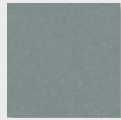
blue



silver-grey



dark blue



platinum-grey



ochre



Mosaic 5 x 5 cm, smooth

Floor/Wall
Tiles

5 x 5 cm



Cove Skirting

10 x 10 cm*



Mosaic, with moisture-resistant net on reverse side
Sheet: 30 x 30 cm



					5 x 5 cm	10 x 10 cm*	Nominal dimens.
					47 x 47 x 6 mm	100 x 97 x 6 mm	Work size
					smooth, upgraded	smooth, upgraded	Surface
					11.00 sheets/m ²	10.00/m	m ² /m - pieces
					12.98/m ²	1.40/m	m ² /m - kg
					11 sheets	15	Bundle - pieces
					1.00 m ²	1.50 m	Bundle - m ² /m
					12.98	2.10	Bundle - kg
					78.00		Pallet - m ²
					1,012.44		Pallet - kg
					R10/B	R10/B	Slip resistance
					1 - 2		Stress group
					433050	433058	white
					Price gr. 216 (m ²)	Price gr. 416 (pce.)	
					433055	433059	light-cream
					Price gr. 167 (m ²)	Price gr. 416 (pce.)	
					433053	433060	silver-grey
					Price gr. 167 (m ²)	Price gr. 416 (pce.)	
					433054	433061	platinum-grey
					Price gr. 167 (m ²)	Price gr. 416 (pce.)	
					433051		black
					Price gr. 167 (m ²)		
					433052		blue
					Price gr. 216 (m ²)		
					433057		dark blue
					Price gr. 261 (m ²)		
					433056		ochre
					Price gr. 216 (m ²)		

*For details, refer to page 9.16.







Universality in Its Best Sense

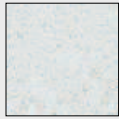
The series Optima effectively supports modern architecture. The glazed stoneware tiles with their typical granulated surface meet the requirements of slip-resistance valuation groups R10/A, R11/B and R12V4. All colours are matched to the System Plural plus and thus permit harmonious transitions between the most different functional areas. The ceramic shower tub system is an important contribution to barrier-free building.



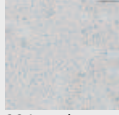
R10/A

R11/B

R12V4



303 marble-white



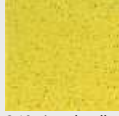
326 smoky-grey



328 cinnamon-brown



339 anthracite



340 signal-yellow



341 ultramarine



342 pastel blue



343 contrasting red



Floor/wall tile 20 x 20 cm
smooth, granulated
slip-resistant



Floor tile 20 x 20 cm
grained, granulated
slip-resistant



Floor tile 20 x 20 cm
profiled, granulated
slip-resistant



paper-net on reverse side

Floor/wall tile 10 x 10 cm
smooth, granulated
slip-resistant



paper-net on reverse side

Floor tile 10 x 10 cm
grained, granulated
slip-resistant



Cove skirting 10 x 20 cm
smooth, granulated
slip-resistant



Cove skirting 10 x 10 cm
smooth, granulated
slip-resistant



External corner for cove skirting
10 x 10 cm, 10 x 15 cm, 10 x 20 cm
smooth, granulated



Internal corner for cove skirting
10 x 10 cm, 10 x 15 cm, 10 x 20 cm
smooth, granulated

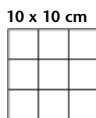


Shower tub system Corner Perlstic
10 x 10 cm
grained, granulated
slip-resistant

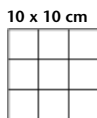


Shower tub system Strip Perlstic
10 x 10 cm
grained, granulated
slip-resistant

Floor/Wall Tiles



10 x 10 cm
Mosaic, paper-net
on reverse side
Sheet: 297 x 297 mm



10 x 10 cm
Mosaic, paper-net on
reverse side, Sheet:
297 x 297 mm, Perlstic



20 x 20 cm



20 x 20 cm



20 x 20 cm



	10 x 10 cm	10 x 10 cm	20 x 20 cm	20 x 20 cm	20 x 20 cm	Stress group
	97 x 97 x 9.0 mm	97 x 97 x 9.0 mm	197 x 197 x 9.0 mm	197 x 197 x 9.0 mm	197 x 197 x 9.0 mm	Nominal dims.
	smooth, granulated	fine-grained, granulated	smooth, granulated	fine-grained, granulated	profiled, granulated	Work size
	11.00 sheets	11.00 sheets	25.00	25.00	25.00	Surface
	17.82	17.82	20.00	20.00	20.00	m ² - pieces
	11 sheets	11 sheets	25	25	22	m ² - kg
	1.00	1.00	1.00	1.00	0.88	Bundle - pieces
	17.82	17.82	20.00	20.00	20.00	Bundle - m ²
	56.00	56.00	60.00	60.00	52.80	Bundle - kg
	997.92	997.92	1,200.00	1,200.00	1,056.00	Pallet - m ²
	R10/A	R11/B	R10/A	R11/B	R12V4	Pallet - kg
	2	2	2	2	2	Slip resistance
	600728-303H Price gr. 194 (m ²)	600729-303H Price gr. 194 (m ²)	620748-303H Price gr. 114 (m ²)	620749-303H Price gr. 114 (m ²)	620744-303H Price gr. 127 (m ²)	4 303 marble-white
	600728-326H Price gr. 194 (m ²)	600729-326H Price gr. 194 (m ²)	620748-326H Price gr. 114 (m ²)	620749-326H Price gr. 114 (m ²)	620744-326H Price gr. 127 (m ²)	4 326 smoky-grey
	600728-328H Price gr. 194 (m ²)	600729-328H Price gr. 194 (m ²)	620748-328H Price gr. 114 (m ²)	620749-328H Price gr. 114 (m ²)	620744-328H Price gr. 127 (m ²)	4 328 cinnamon-brown
	600728-339H Price gr. 194 (m ²)	600729-339H Price gr. 194 (m ²)	620748-339H Price gr. 114 (m ²)	620749-339H Price gr. 114 (m ²)	620744-339H Price gr. 127 (m ²)	3 339 anthracite
	600728-340H Price gr. 213 (m ²)	600729-340H Price gr. 213 (m ²)	620748-340H Price gr. 132 (m ²)	620749-340H Price gr. 132 (m ²)		3 340 signal-yellow
	600728-341H Price gr. 213 (m ²)	600729-341H Price gr. 213 (m ²)	620748-341H Price gr. 132 (m ²)	620749-341H Price gr. 132 (m ²)		3 341 ultramarine
	600728-342H Price gr. 194 (m ²)	600729-342H Price gr. 194 (m ²)	620748-342H Price gr. 114 (m ²)	620749-342H Price gr. 114 (m ²)	620744-342H Price gr. 127 (m ²)	4 342 pastel blue
	600728-343H Price gr. 213 (m ²)					3 343 contrasting red

Cove Skirting



10 x 10 cm*



10 x 20 cm*

Internal Corner
for Cove Skirting
*/***



External Corner
for Cove Skirting
*/***



Shower Tub System



10 x 10 cm**



10 x 10 cm**



	10 x 10 cm*	10 x 20 cm*			Strip Perlstic	Corner Perlstic	Stress group
	102 x 97 x 9.0 mm	102 x 197 x 9.00 mm	102 x 35 x 9.0 mm	102 x 35 x 9.0 mm	10 x 10 cm**	10 x 10 cm**	Nominal dims.
	smooth, granulated	smooth, granulated	smooth, granulated	smooth, granulated	fine-grained, granulated	fine-grained, granulated	Work size
	10.00	5.00			10.00	10.00	Surface
	1.80/m	2.00/m	0.08/pieces	0.08/pieces	2.10/m	0.21/pieces	m - pieces
	12	20	40	30	6	4	m/pce. - kg
	1.20	4.00			0.60		Bundle - pieces
	2.16	8.00			1.26	0.84	Bundle - m
							Bundle - kg
							Pallet - m
							Pallet - kg
	R10/A	R10/A			R11/B	R11/B	Slip resistance
					2	2	Stress group
	600764-303H Price gr. 416 (pce.)	600438-303H Price gr. 421 (pce.)	600436-303H Price gr. 431 (pce.)	600437-303H Price gr. 431 (pce.)	600782-303H Price gr. 447 (pce.)	600783-303H Price gr. 477 (pce.)	4 303 marble-white
	600764-326H Price gr. 416 (pce.)	600438-326H Price gr. 421 (pce.)	600436-326H Price gr. 431 (pce.)	600437-326H Price gr. 431 (pce.)	600782-326H Price gr. 447 (pce.)	600783-326H Price gr. 477 (pce.)	4 326 smoky-grey
	600764-328H Price gr. 416 (pce.)	600438-328H Price gr. 421 (pce.)	600436-328H Price gr. 431 (pce.)	600437-328H Price gr. 431 (pce.)	600782-328H Price gr. 447 (pce.)	600783-328H Price gr. 477 (pce.)	4 328 cinnamon-brown
	600764-339H Price gr. 416 (pce.)	600438-339H Price gr. 421 (pce.)	600436-339H Price gr. 431 (pce.)	600437-339H Price gr. 431 (pce.)	600782-339H Price gr. 447 (pce.)	600783-339H Price gr. 477 (pce.)	3 339 anthracite
					600782-340H Price gr. 447 (pce.)	600783-340H Price gr. 477 (pce.)	3 340 signal-yellow
					600782-341H Price gr. 447 (pce.)	600783-341H Price gr. 477 (pce.)	3 341 ultramarine
	600764-342H Price gr. 416 (pce.)	600438-342H Price gr. 421 (pce.)	600436-342H Price gr. 431 (pce.)	600437-342H Price gr. 431 (pce.)	600782-342H Price gr. 447 (pce.)	600783-342H Price gr. 477 (pce.)	4 342 pastel blue

* For details, refer to the pages 9.14 and 9.16.
** This special piece meets the requirements of DIN 18024
"Barrier-free building" and DIN 18025 "Barrier-free living".
*** Fitting to cove skirting 10 x 10 / 10 x 20 cm.



Register number:
P1B017/01

