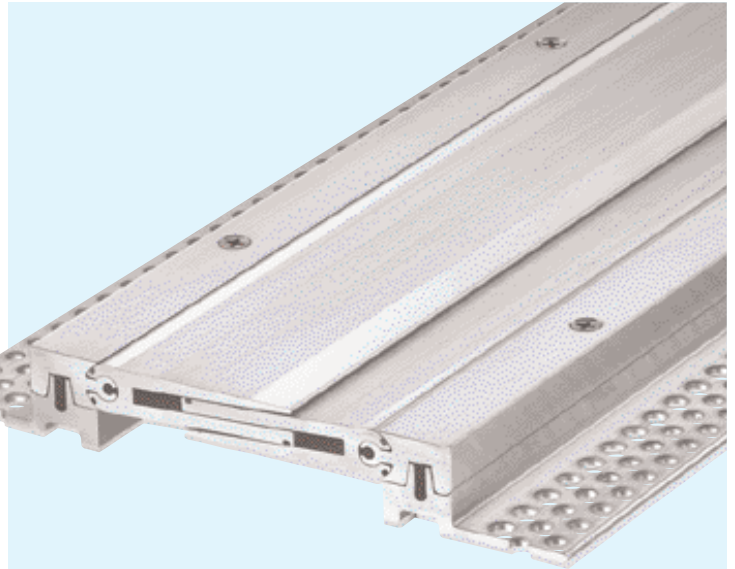


# SERIES FSV 235/...

FOR FLOORS WITH HIGH LOAD CAPACITY AND EXTREME MOVEMENTS

## MIGUTRANS

- **VISIBLE SURFACE SHOWS NO GAPS (TO AVOID DIRT ACCUMULATION)**
- **SOLID ALL METAL-PROFILE (HARD WEARING, MAINTENANCE-FREE, LONG LASTING)**
- **PROFILE ABSORBS MOVEMENT IN THREE DIRECTIONS**
- **REPLACEABLE BRIDGING UNIT**
- **FOR JOINT WIDTHS UP TO 150 MM**



### TECHNICAL DATA

Profile	Joint width max. mm	Total Movement mm	Visible Width of Profile mm	Total Width of Profile mm	Installation Height mm	Load capacity Lorries (DIN 1072) MP	Load capacity Fork lift trucks (DIN 1055) MP	Load capacity Solid plastic tyres kg/mm width of wheel
FSV 235/4500	150	60 ± 30	235	357	45	30	7	6,5

Material description, important notes and special properties = Page 2

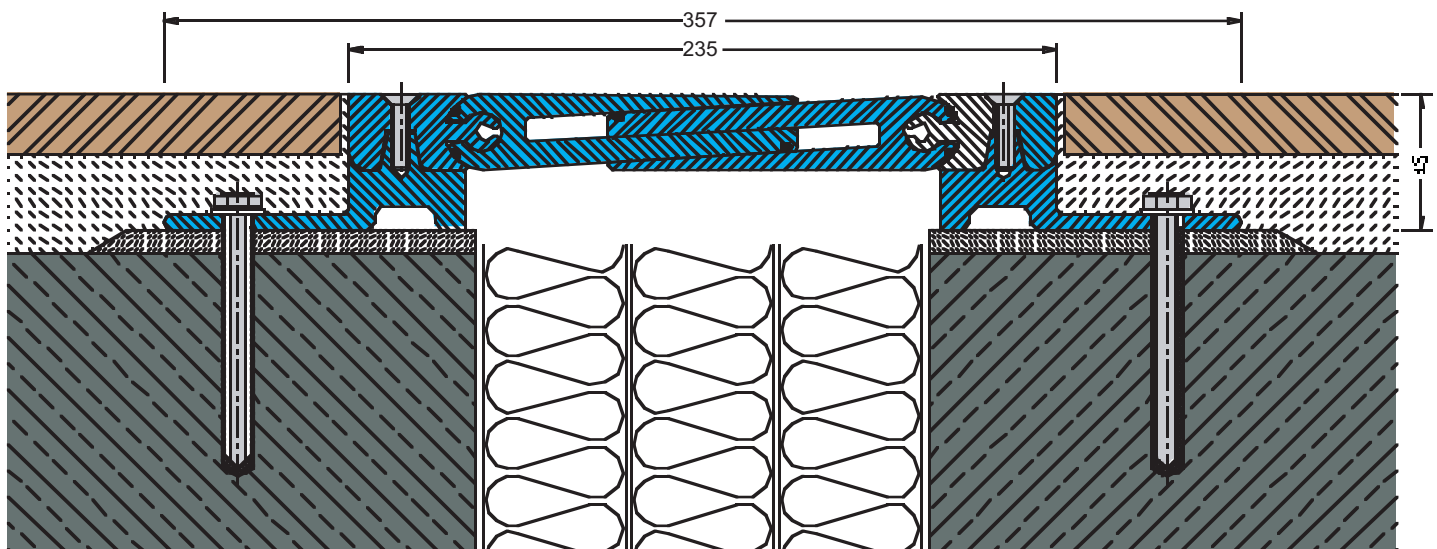
Replacement instruction = Page 24

Corner-versions = Page 17+20

Intersections = Page 26

Additional examples for application = Page 21–24

Installation instruction = Page 32



FSV235/4500

Scale 1 : 2,5