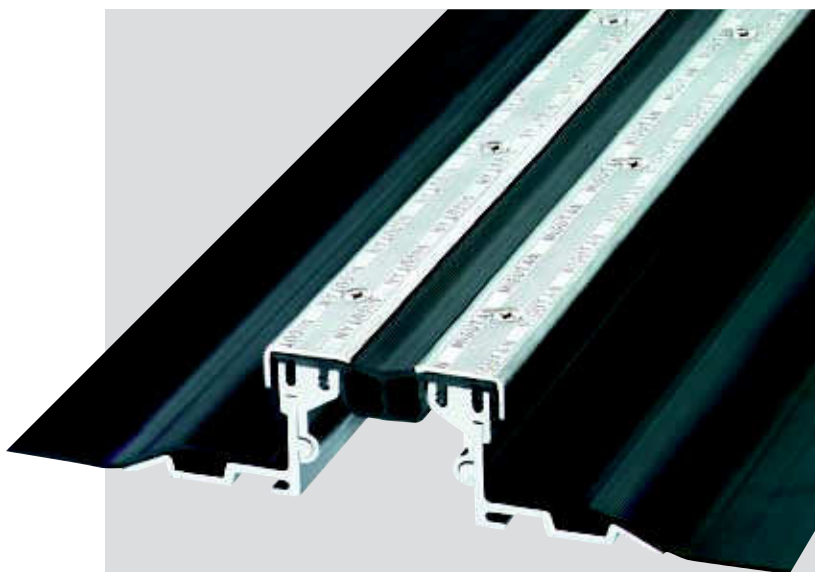


# SERIES FPG 90/... NI

WITH LONG AAS-SEALING SHEETS FOR BITUMINOUS SEALING

## MIGUTAN

- **WATERTIGHT  
(OFFICIAL TEST CERTIFICATE)**
- **SEALING ON TOP OF SURFACE**
- **CENTRAL INSERT IS INTER-  
CHANGEABLE AT ANY TIME**
- **WITH SMOOTH INSERT  
FOR INCREASED HYGIENIC  
REQUIREMENTS**



### TECHNICAL DATA

Profile	Joint width max. mm	Total movement mm	Visible width of profile	Total width of profile	Installation height mm	Load capacity lorries (DIN 1072) kN	Load capacity fork lift trucks (DIN 1055) kN	Load capacity solid plastic tyres kg/mm width of wheel
FPG 90/ 25 NI	60	20 ± 10	95	222	25	–	–	–
FPG 90/ 35 NI	60	20 ± 10	95	222	35	600	130	not allowed
FPG 90/ 45 NI	60	20 ± 10	95	211	46	300	70	not allowed
FPG 90/ 60 NI	60	20 ± 10	95	222	60	300	30	not allowed
FPG 90/ 80 NI	60	20 ± 10	95	222	81	120	30	not allowed
FPG 90/ 95 NI	60	20 ± 10	95	222	97	60	not allowed	not allowed
FPG 90/115 NI	60	20 ± 10	95	222	117	60	not allowed	not allowed

Profiles with an installation height from 60 mm upwards can be adjusted to higher load capacity. Please ask for our advice.

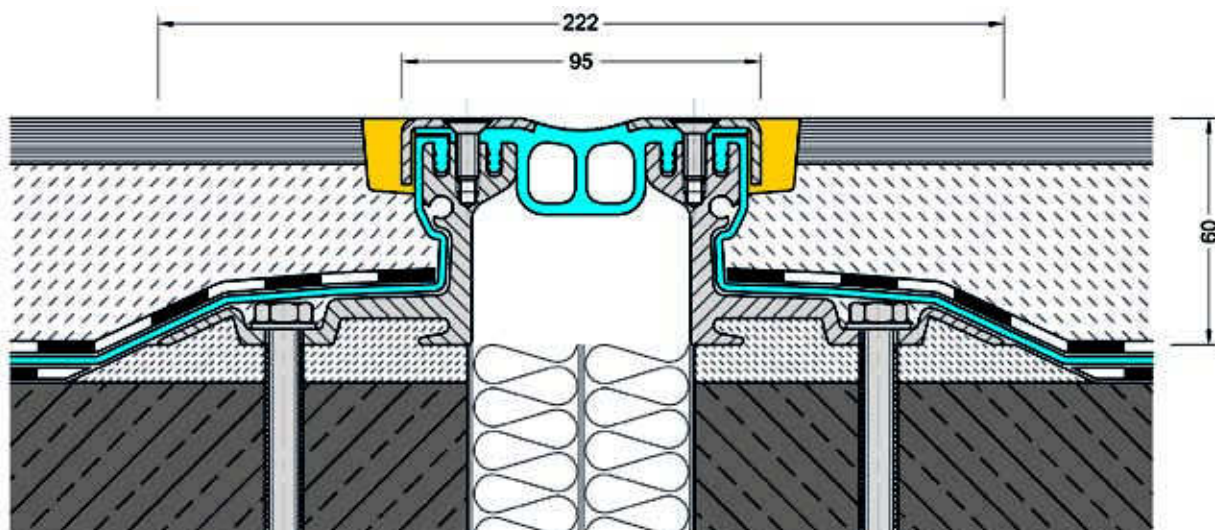
Material description, important notes and special properties = Page 2

Larger heights = Page 34–35

Column-/Wall-connections = Page 26–28

Terminations/Intersections = Page 40–45

Further usage = Page 30–39



FPG 90/60 NI

Scale 1 : 2