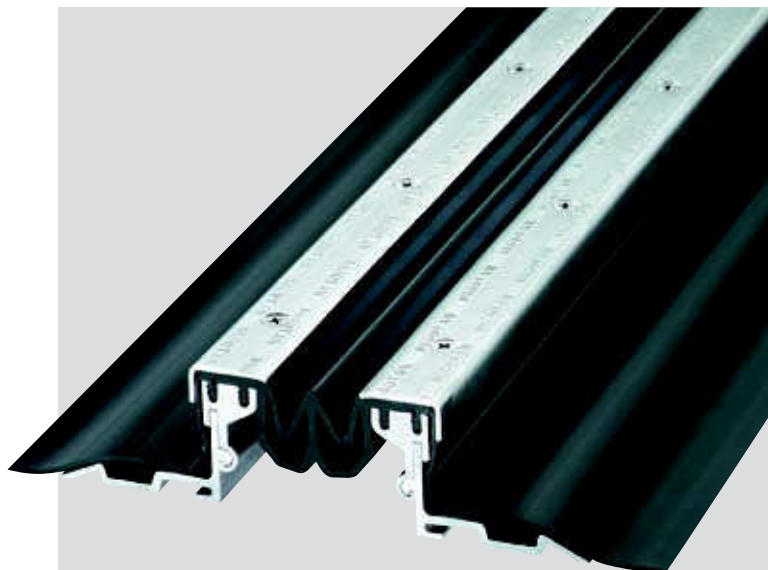


# SERIES FP 115/... NI

WITH LONG AAS-SEALING SHEETS FOR BITUMINOUS SEALING

## MIGUTAN

- **WATERTIGHT  
(OFFICIAL TEST CERTIFICATE)**
- **SEALING ON TOP OF SURFACE**
- **CENTRAL INSERT IS INTER-  
CHANGEABLE AT ANY TIME**
- **MOVEMENT CAPACITY 80 MM**
- **FOR JOINT WIDTHS UP TO 80 MM**



### TECHNICAL DATA

Profile	Joint width max. mm	Total movement mm	Visible width of profile	Total width of profile	Installation height mm	Load capacity lorries (DIN 1072) kN	Load capacity fork lift trucks (DIN 1055) kN	Load capacity solid plastic tyres kg/mm width of wheel
FP 115/ 25 NI	80	80 + 50/-30	115	242	25	–	–	–
FP 115/ 35 NI	80	80 + 50/-30	115	242	35	600	130	not allowed
FP 115/ 45 NI	80	80 + 50/-30	115	231	46	300	70	not allowed
FP 115/ 60 NI	80	80 + 50/-30	115	242	60	300	30	not allowed
FP 115/ 80 NI	80	80 + 50/-30	115	242	81	120	30	not allowed
FP 115/ 95 NI	80	80 + 50/-30	115	242	97	60	not allowed	not allowed
FP 115/115 NI	80	80 + 50/-30	115	242	117	60	not allowed	not allowed

Profiles with an installation height from 60 mm upwards can be adjusted to higher load capacity. Please ask for our advice.

**Material description, important notes and special properties = Page 2**

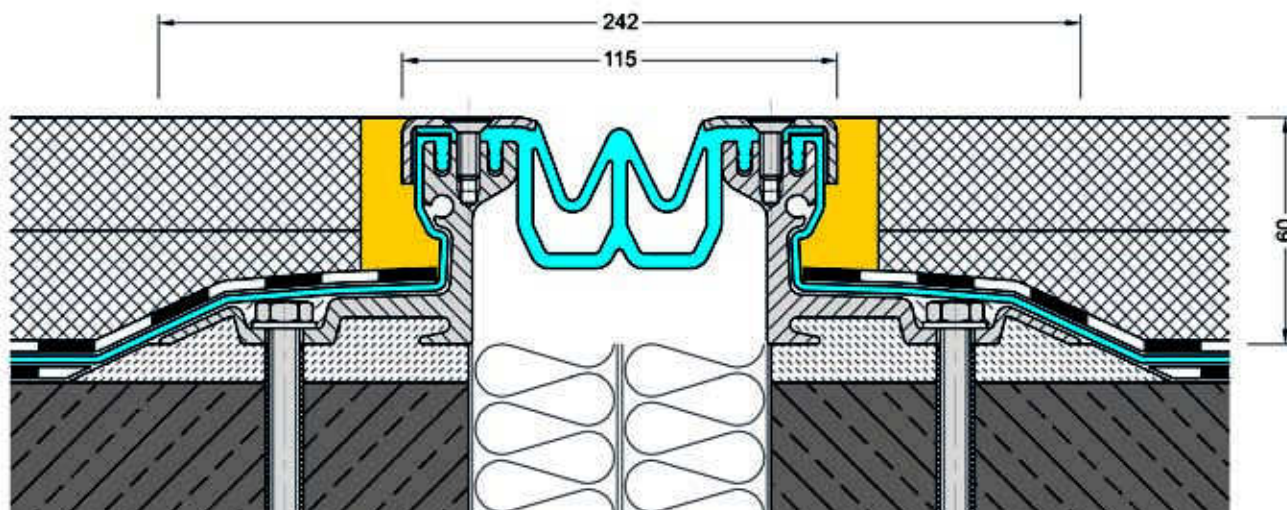
**Larger heights = Page 34–35**

**Column-/Wall-connections = Page 26–28**

**Terminations/Intersections = Page 40–45**

**Stainless Steel Cover Plates = Page 29**

**Further usage = Page 30–39**



FP 115/60 NI

Scale 1 : 2