

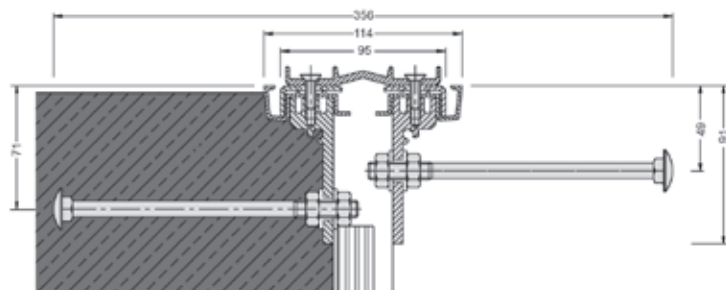
# INSTALLATION METHODS

SERIES FP .../90 B NI

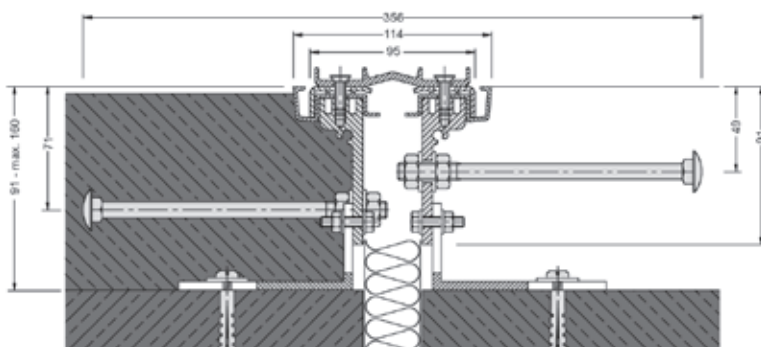
## MIGUTAN

Example FP 90/90 B NI

### INSTALLATION METHOD ON SHUTTERING



### INSTALLATION METHOD ON CONCRETE SLAB



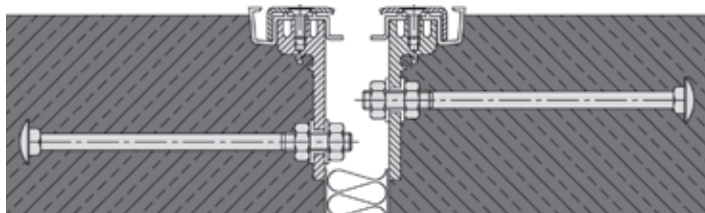
## USAGE

### CONNECTION JOINT FILLER PROFILE AAP 50/20

Example FP 90/90 B NI

**1.**

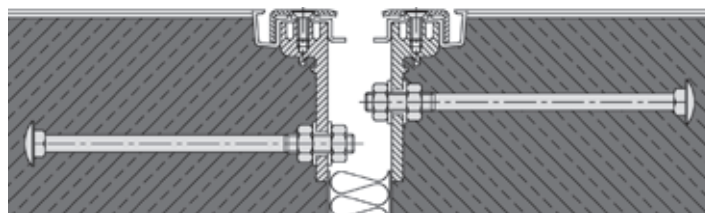
Finishing concrete work



**2.**

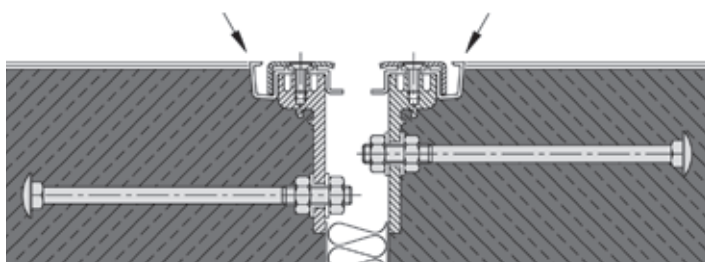
Applying and finishing of the coating.

If the insert and AAS sheets will not be installed directly after application of the profile, it is absolutely necessary to remove or cut the spacer



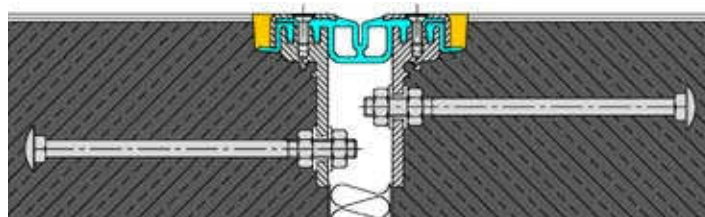
**3.**

Cutting free and removing of the AAP 50/20



**4.**

The AAS side sheets and the central insert to be pushed in and pressed together by the stainless steel cappings. The cappings are secured with the stainless steel screws supplied. The connection joint has to be filled with a suitable sealant, e.g. Polyurethane, to ensure a watertight connection



**5.**

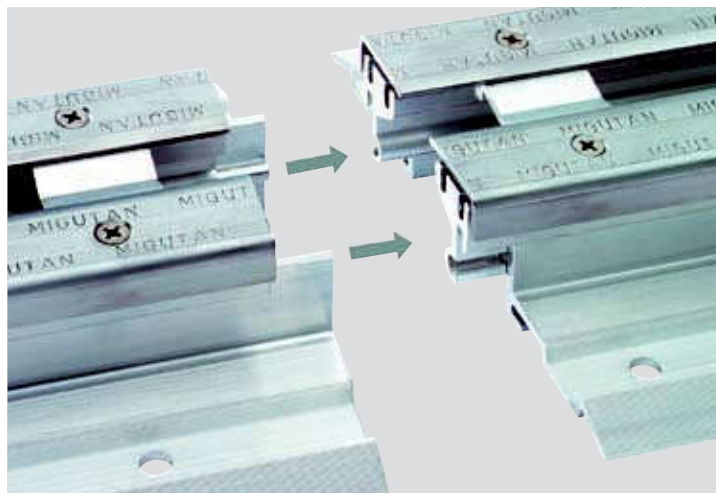
The stainless steel screws are to be retightened after approx. 10 – 14 days by means of a torque wrench (7 Nm)

# PROFILE-CONNECTIONS

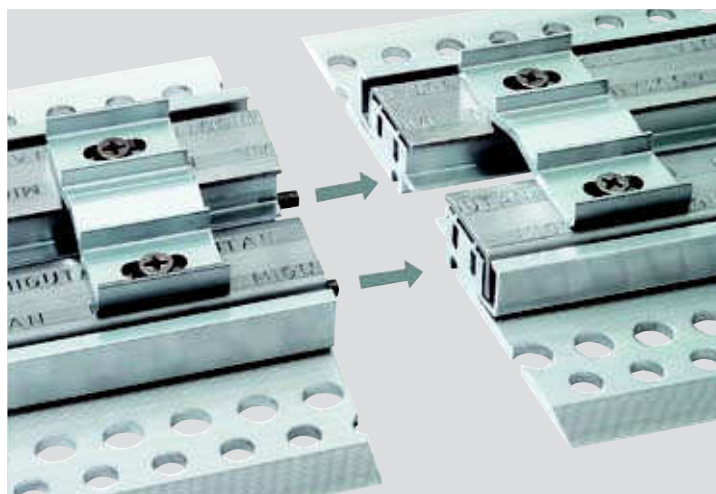
EXPANSION JOINT SYSTEMS

## MIGUTAN

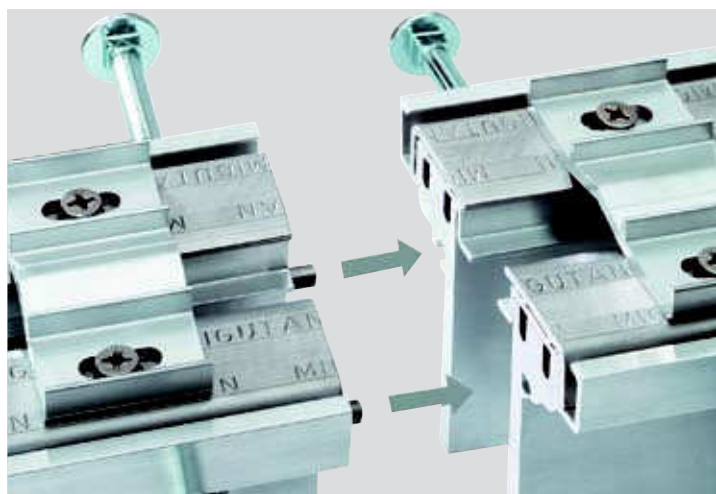
Example FP 90/60 NI



Example FP 90/25 NI



Example FP 90/90 B NI



# COLUMN-WALL CONNECTIONS

WITH LONG AAS-SEALING SHEETS

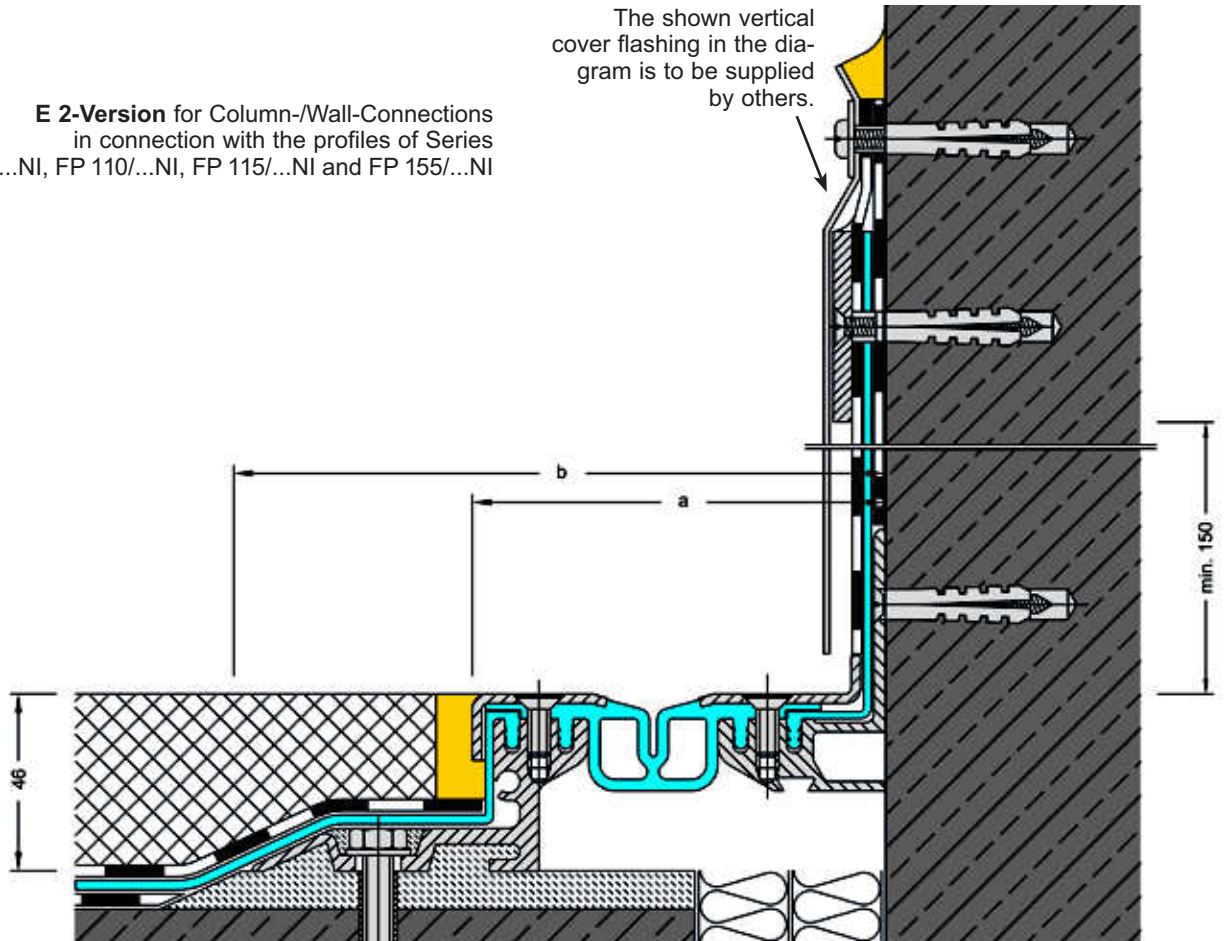
MIGUTAN

**E 2-Version** for Column-/Wall-Connections  
in connection with the profiles of Series  
FP 80/...NI, FP(G) 90/...NI, FP 110/...NI, FP 115/...NI and FP 155/...NI

The shown vertical  
cover flashing in the dia-  
gram is to be supplied  
by others.

FP 90/45 NI E 2

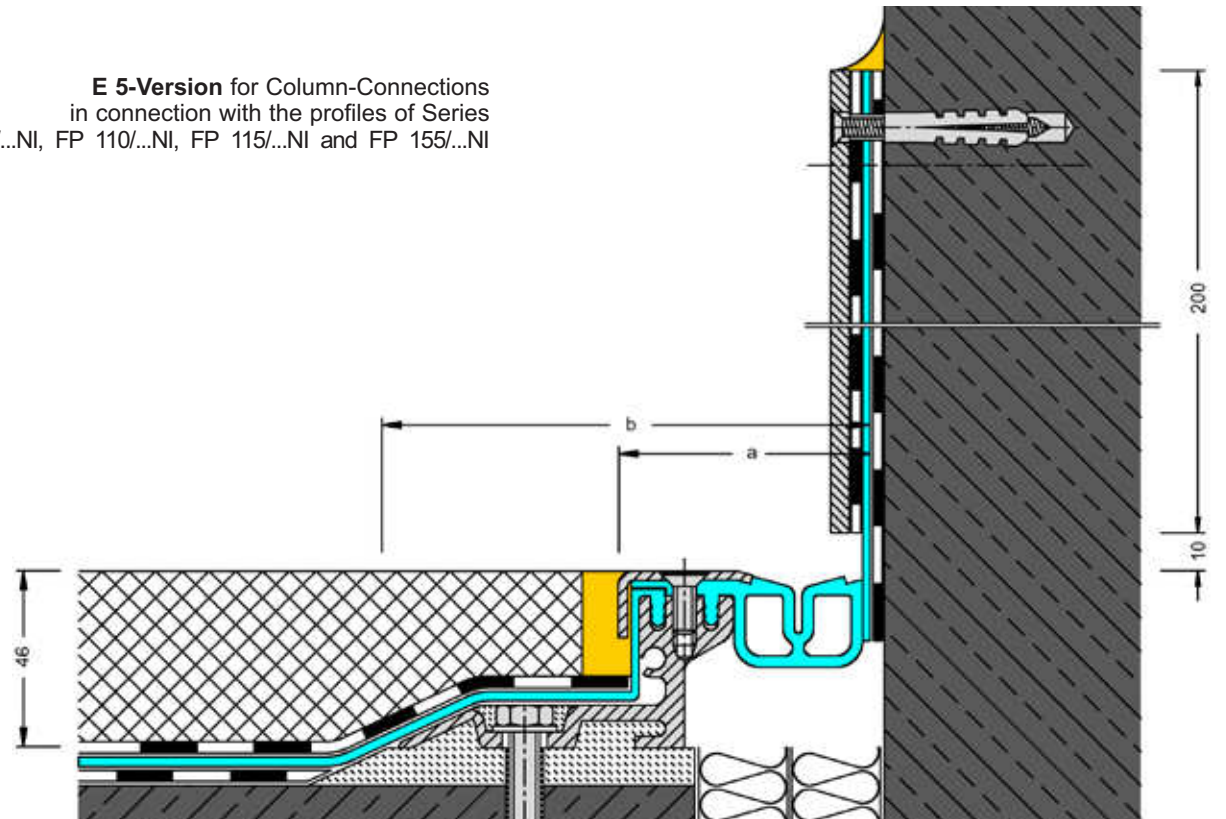
Scale 1 : 2



**E 5-Version** for Column-Connections  
in connection with the profiles of Series  
FP 80/...NI, FP(G) 90/...NI, FP 110/...NI, FP 115/...NI and FP 155/...NI

FP 90/45 NI E 5

Scale 1 : 2



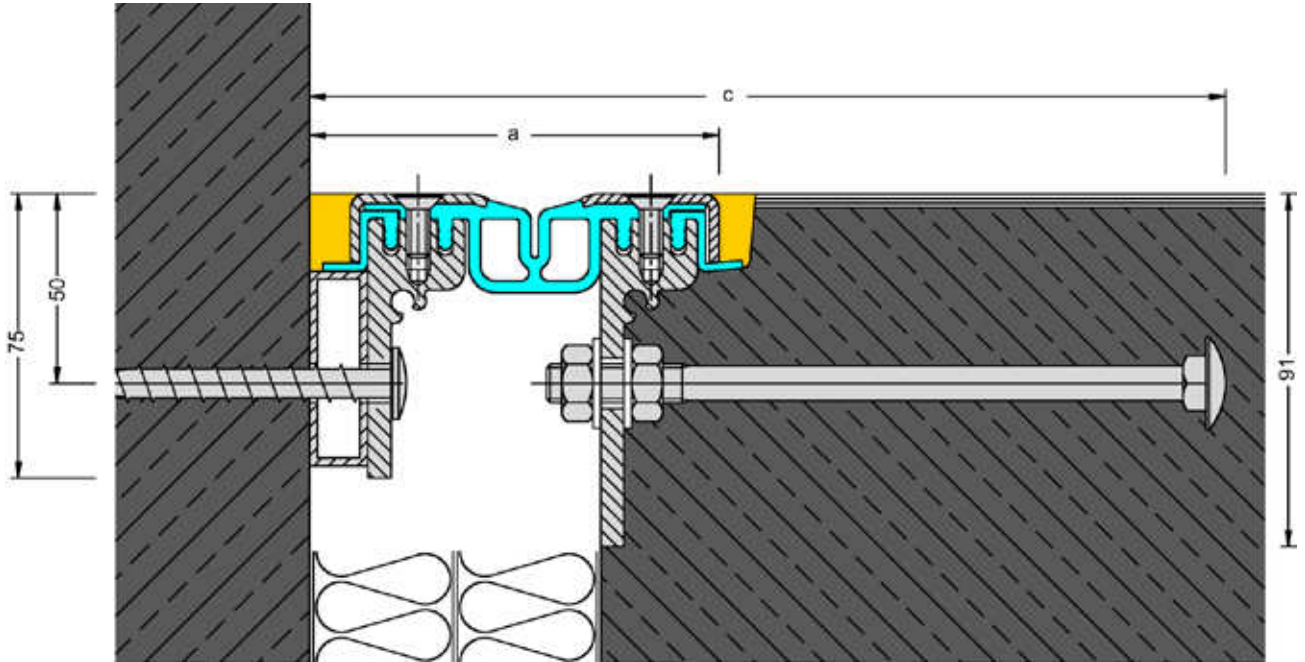
# COLUMN-WALL-CONNECTIONS

WITH SHORT AAS-SEALING SHEETS

## MIGUTAN

### E 3-Version

in connection with the profiles of Series FP 80/90 B NI, FP(G) 90/90 B NI, FP 110/90 B NI, FP 115/90 B NI and FP 155/90 B NI

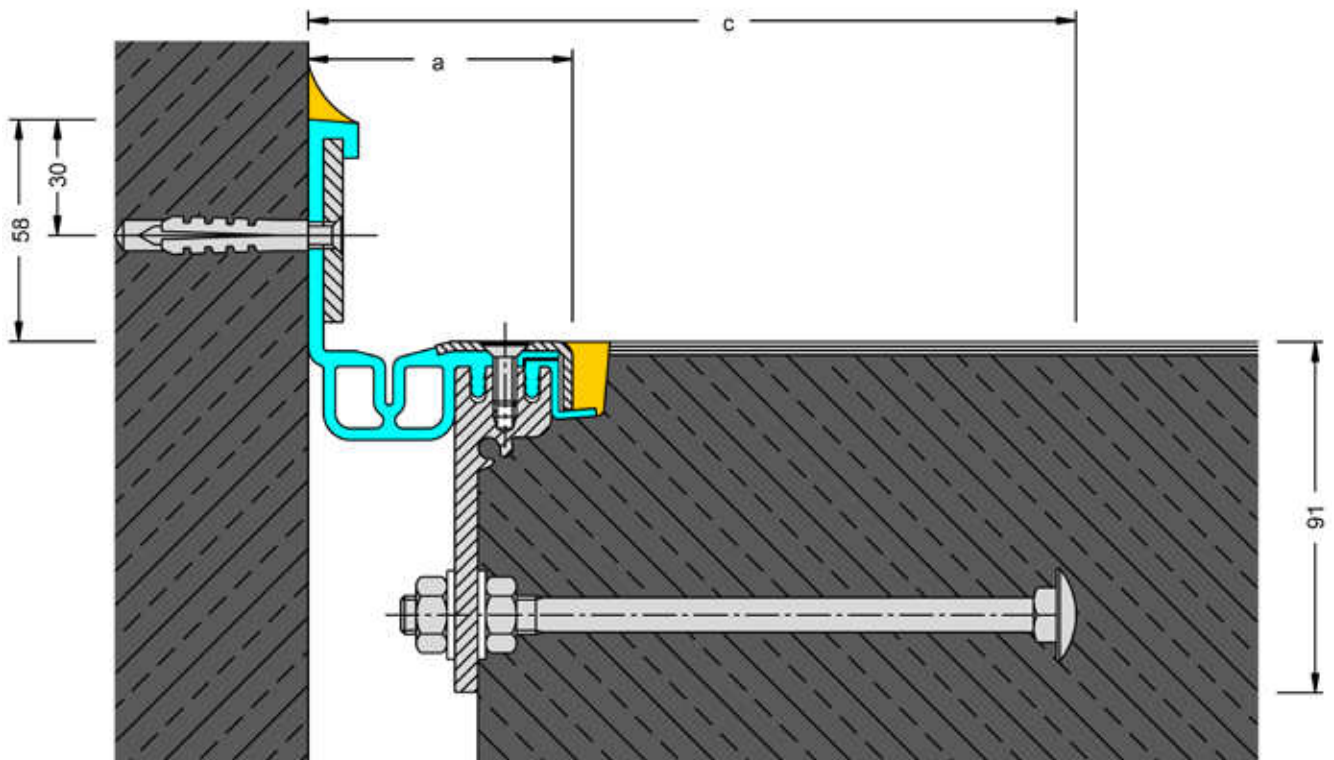


FP 90/90 B NI E 3

Scale 1 : 2

### E 4-Version

in connection with the profiles of Series FP 80/90 B NI, FP(G) 90/90 B NI, FP 110/90 B NI, FP 115/90 B NI and FP 155/90 B NI



FP 90/90 B NI E 4

Scale 1 : 2

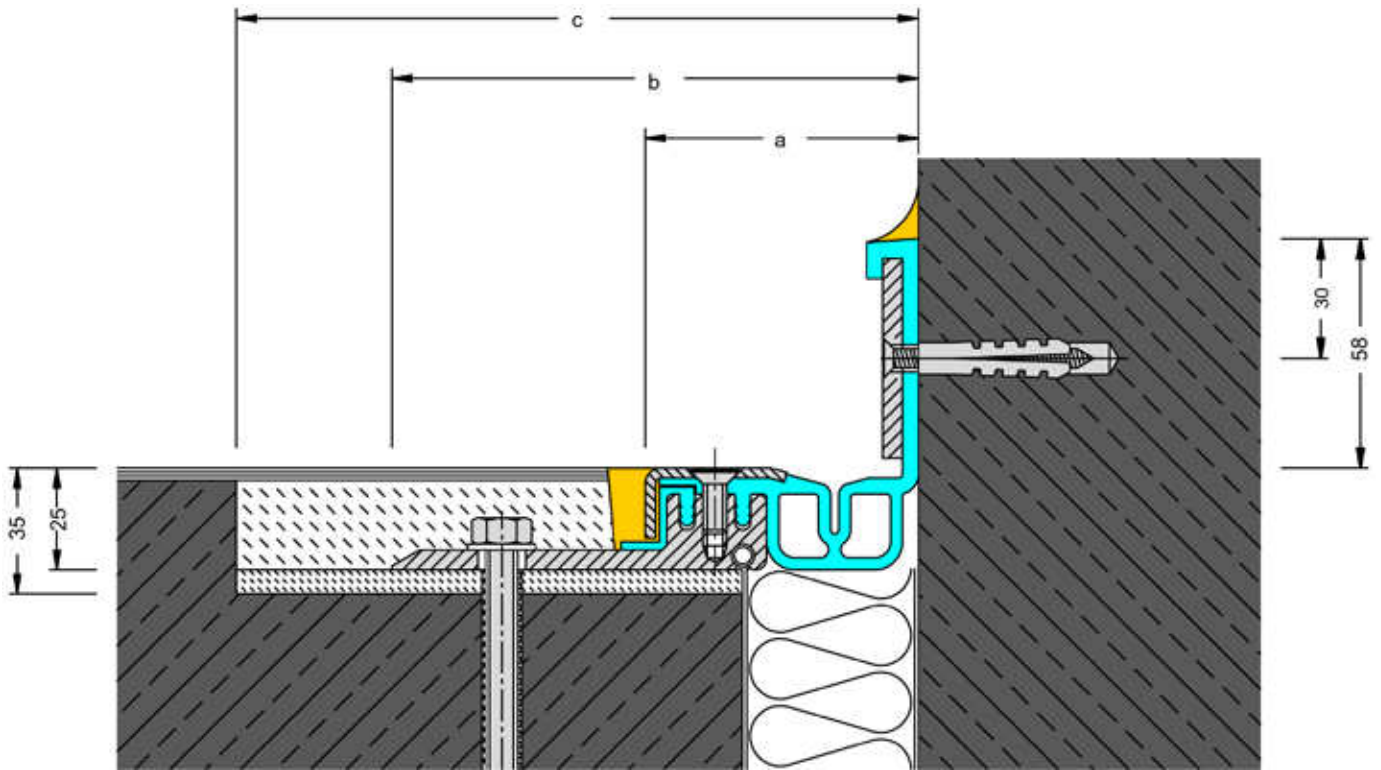
# COLUMN-/WALL CONNECTIONS

WITH SHORT AAS-SEALING SHEETS

## MIGUTAN

### E 4-Ausführung

in connection with the profiles of Series FP 80/...NI, FP(G) 90/...NI, FP 110/...NI, FP 115/...NI and FP 155/...NI

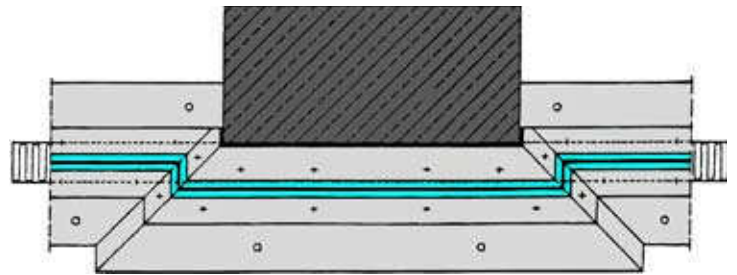


FP 90/25 NI E 4

Scale 1 : 2

### Please consider the following using version E2 or E3:

If the joint is **adjacent to a column or a wall**, two pre-fabricated horizontal intersections will be required at each edge (see drawing). This ensures that the profile covers the centreline of the joint in the area exposed to traffic. Such intersections, however, are not necessary, if the **distance between column/wall and the centreline of the joint is approx. 40 mm**. In this case, it is only necessary to prefabricate a welded connection within the AAS-sheets at each edge of the column/wall.



Intersection of FP 90/... NI for columns (partially E 2 and/or E 3).

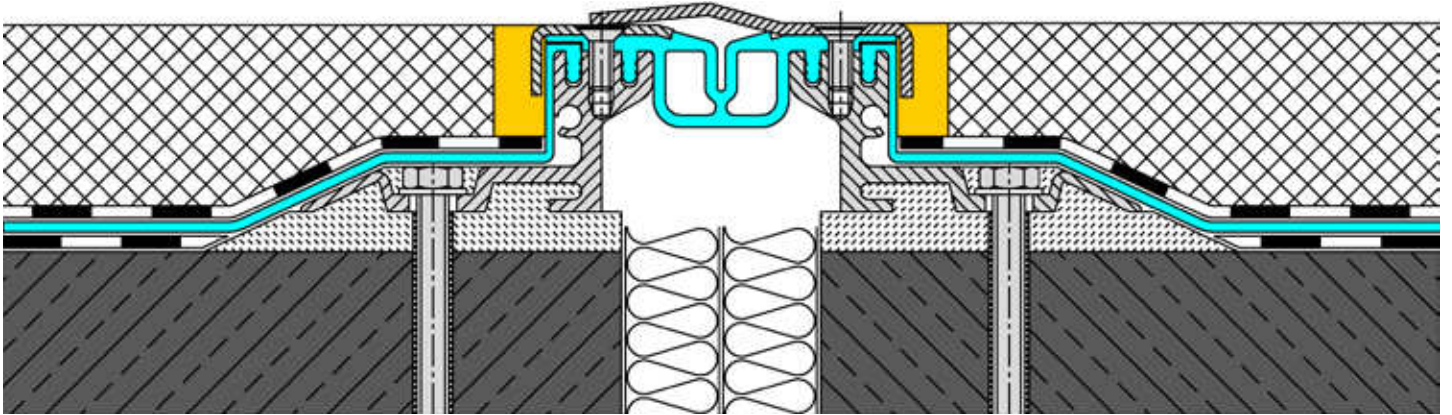
Corner Version Profile	E 2		E 3		E 4			E 5	
	a	b	a	c	a	b	c	a	b
FP 80/... NI	96	159	–	–	56	119	160	55	118
FP(G)90/... NI	109	172	–	–	69	132	170	68	131
FP 110/... NI	125	188	–	–	85	148	185	84	147
FP 115/... NI	129	192	–	–	89	152	190	88	151
FP 155/... NI	169	232	–	–	129	192	230	128	191
FP 80/90 B NI	–	–	92	223	56	–	187	–	–
FP(G)90/90 B NI	–	–	105	236	69	–	200	–	–
FP 110/90 B NI	–	–	121	252	85	–	216	–	–
FP 115/90 B NI	–	–	125	256	89	–	220	–	–
FP 155/90 B NI	–	–	165	296	129	–	260	–	–

# INSTALLATION EXAMPLES

WITH STAINLESS STEEL COVER PLATES

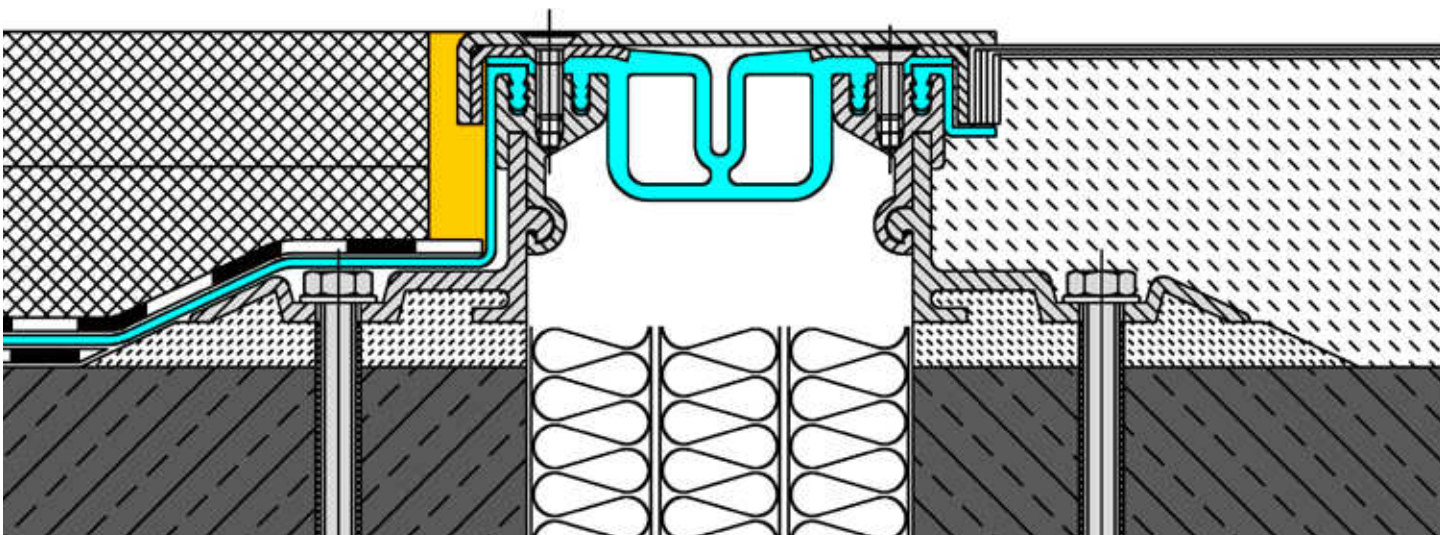
## MIGUTAN

Stainless steel cover plate AP 800 with striated surface in connection with the profiles of the Series FP 90/... NI  
Example: FP 90/45 NI AP 800



If stainless steel cover plates are used, absorbing of vertical movements is not possible.

Stainless steel cover plate APG.../ with smooth surface in connection with the profiles of the Series  
FP 80/... NI, FP 110/..., FP 115/... and FP 155/...  
Example: FP 110/60 NI APG 110/3

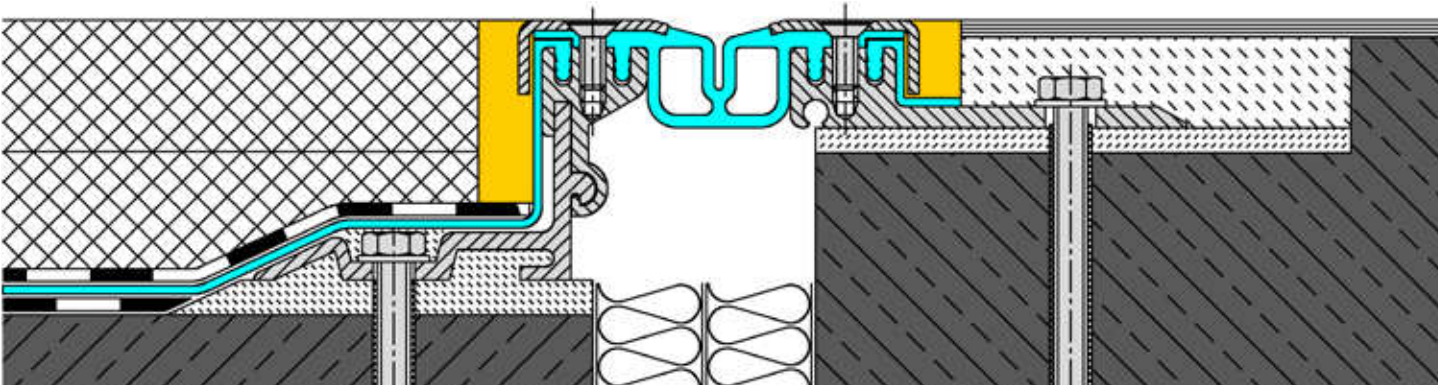


# INSTALLATION EXAMPLES

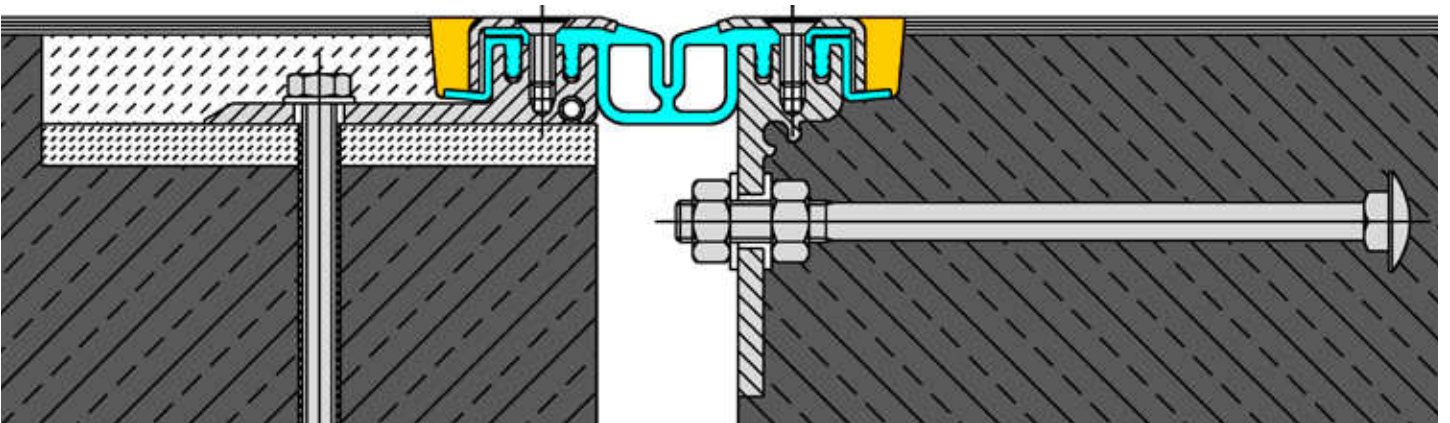
## COMBINED PROFILES

### MIGUTAN

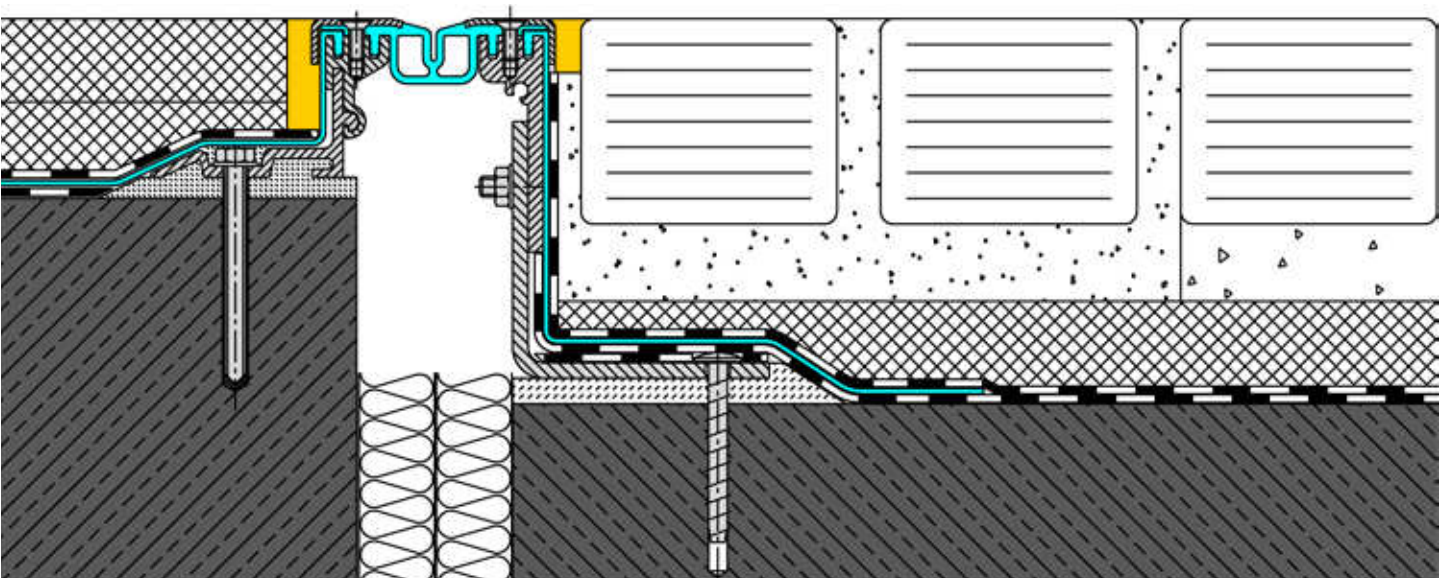
Example: Combined Profile **FP 90/60 NI** (long AAS sheets) with **FP 90/25 NI** (short AAS sheets)



Example: Combined Profile **FP 90/25 NI** (short AAS sheets) with **FP 90/90 B NI**



Example: Combined Profile **FP 90/60 NI** with **FP 90/140 NI** (each with long AAS sheets)

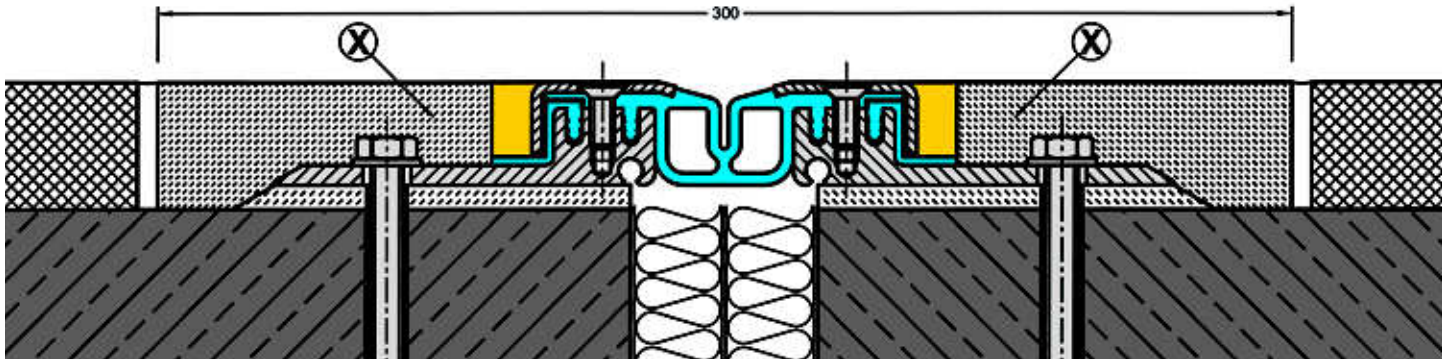


# INSTALLATION EXAMPLES

## EXPANSION JOINT SYSTEMS

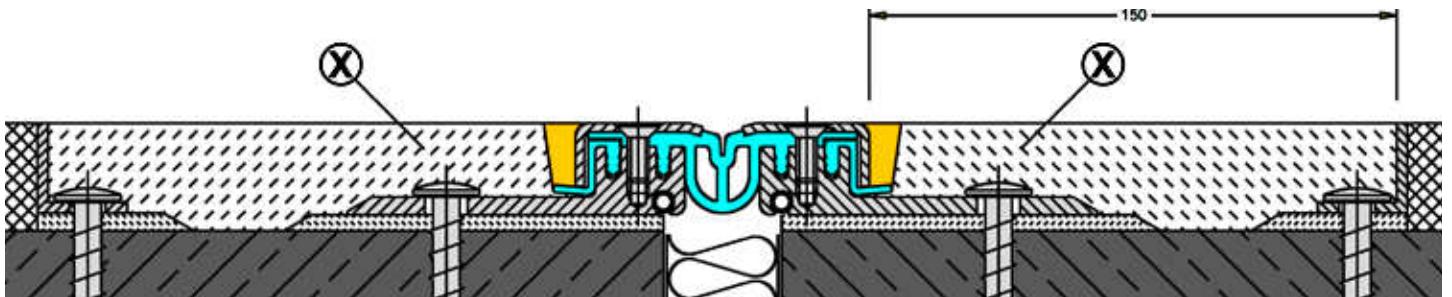
### MIGUTAN

Installation example MIGUTAN expansion joint system with short AAS-sheets  
in connection with screed or asphalt without waterproofing  
Profile: FP 90/25 NI



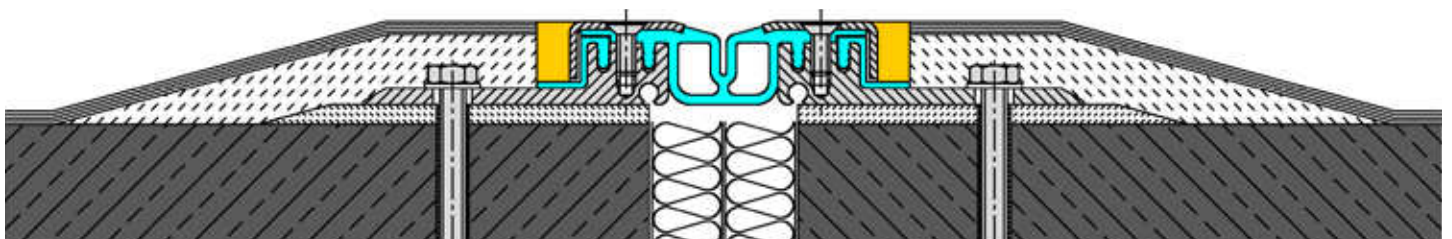
⊗ Watertight epoxy mortar

Installation example MIGUTAN expansion joint system with short AAS-sheets  
in connection with screed or asphalt without waterproofing  
Profile: FP 80/25 NI



⊗ Watertight epoxy mortar

Installation example MIGUTAN expansion joint system with short AAS-sheets put on concrete slab (no recess)  
Profile: FP 90/25 NI

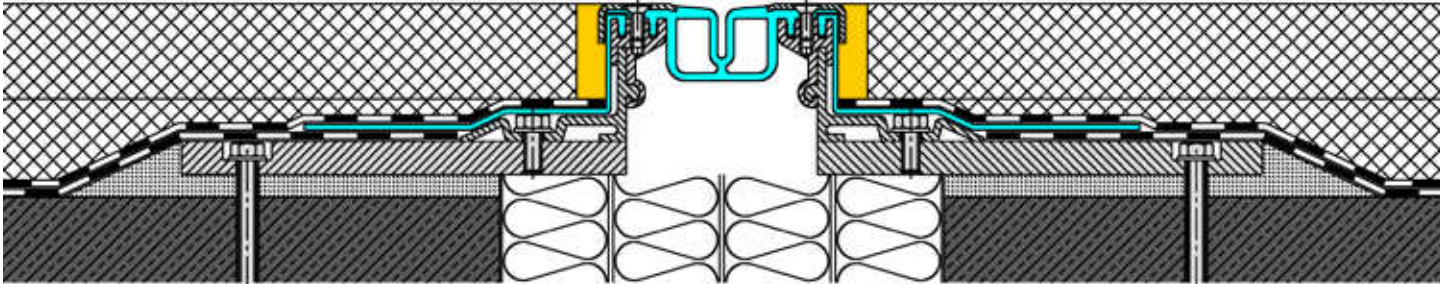


# INSTALLATION EXAMPLES

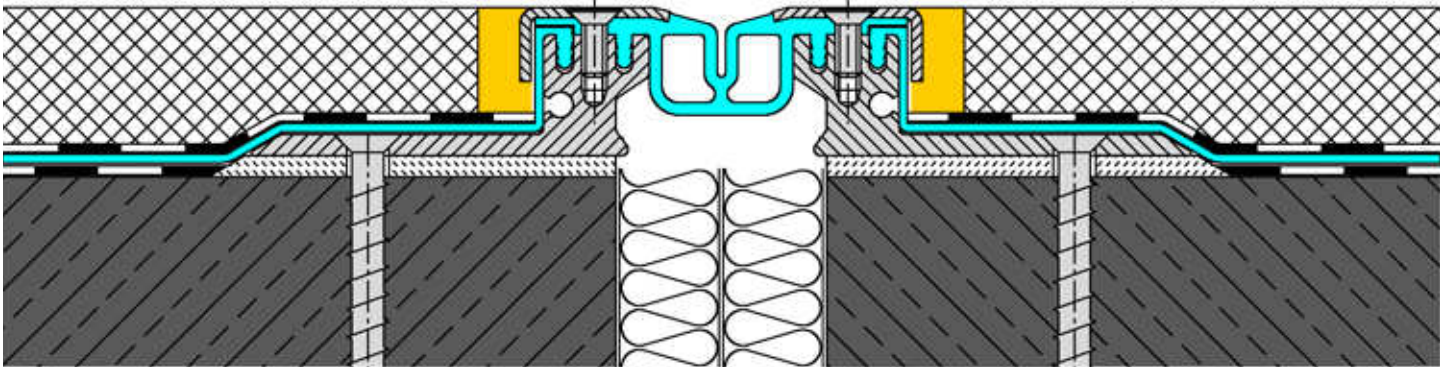
## EXPANSION JOINT SYSTEMS

### MIGUTAN

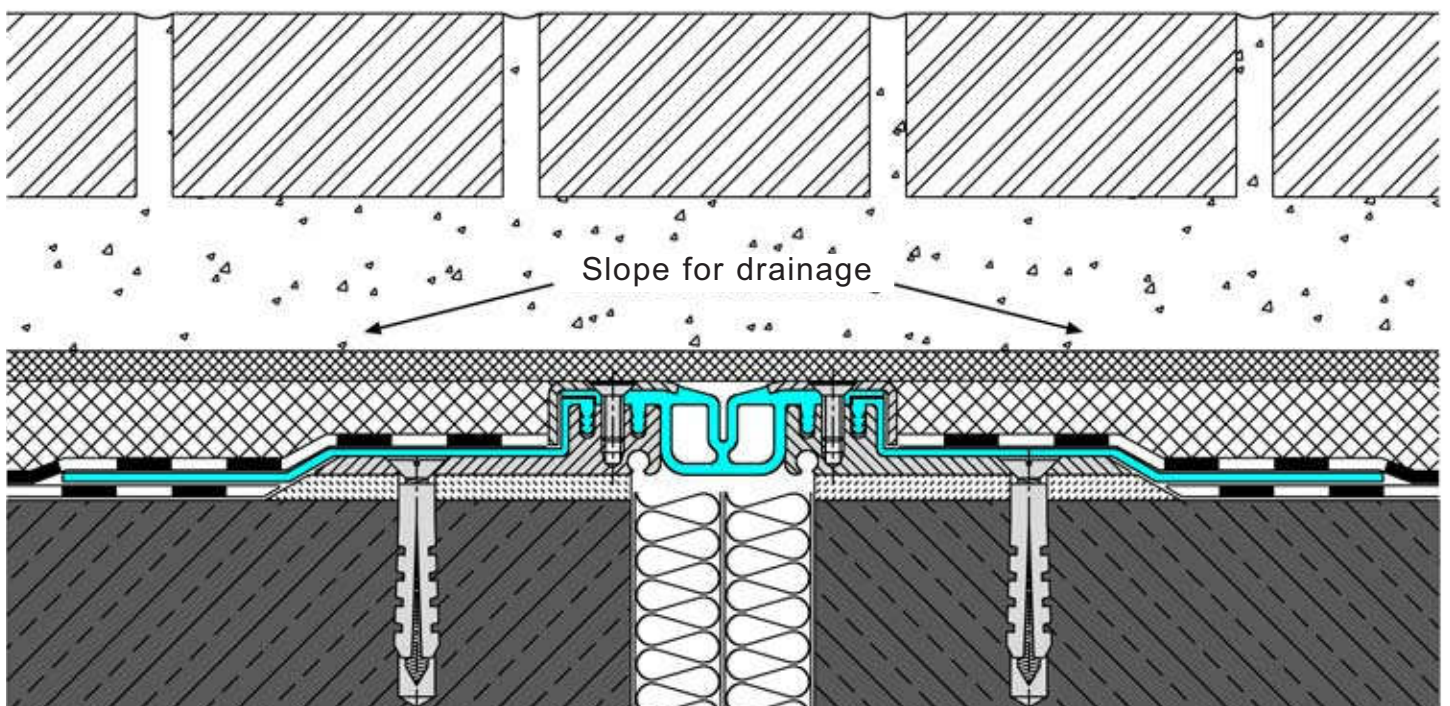
Installation example MIGUTAN expansion joint system with long AAS-sheets and aluminium plates, prefabricated in our works for extremely wide joints.



Installation example MIGUTAN expansion joint system with long AAS-sheets in connection with asphalt and waterproofing membranes  
Profile: FP 90/35 NI



Installation example MIGUTAN expansion joint system with long AAS-sheets installed below earth

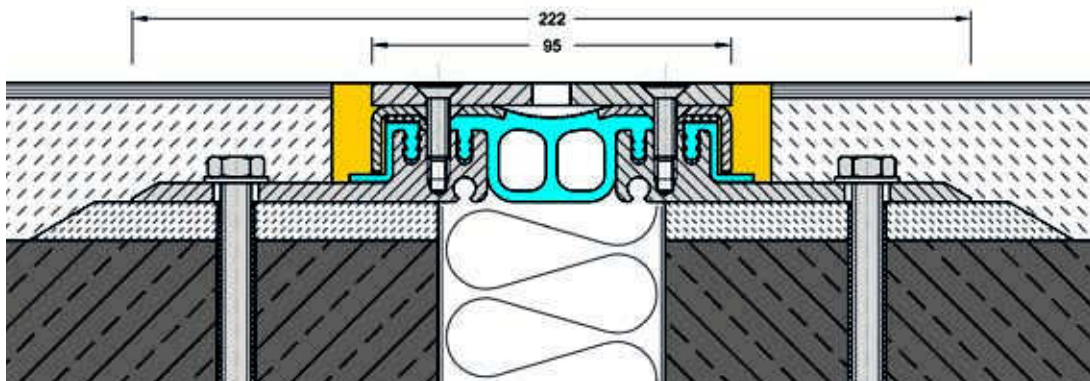
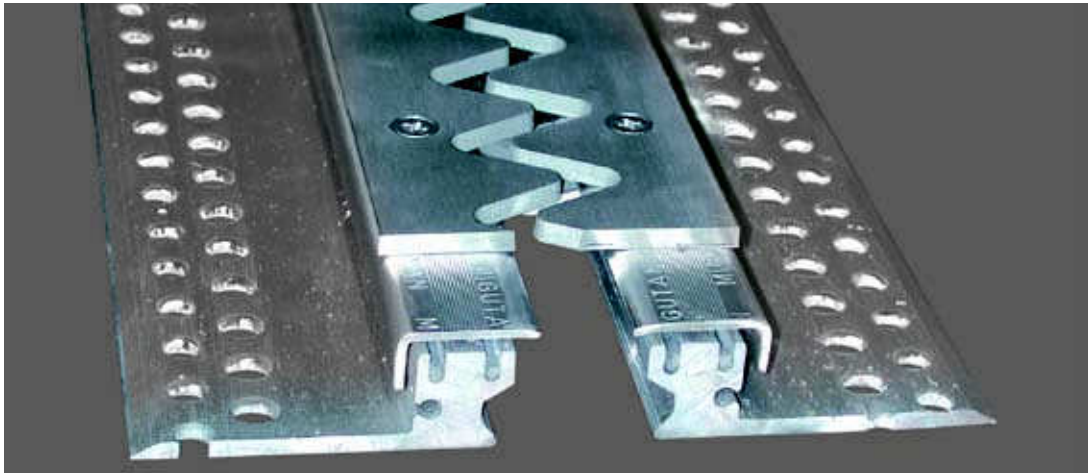


# INSTALLATION EXAMPLES

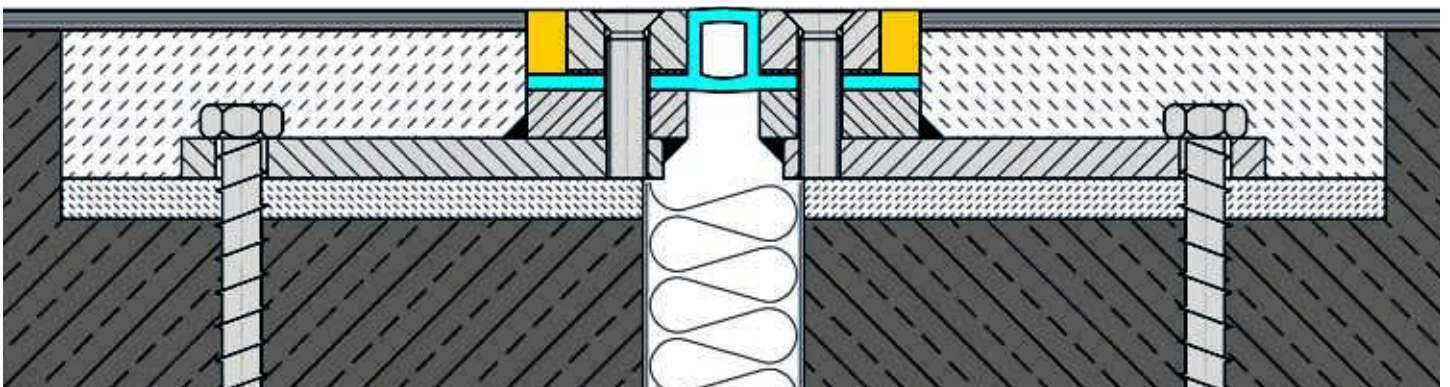
## EXPANSION JOINT SYSTEMS

### MIGUTAN

Profile with toothed cover plate „APS“



FPSG ... for increased hygienic requirements in connection with heavy loads

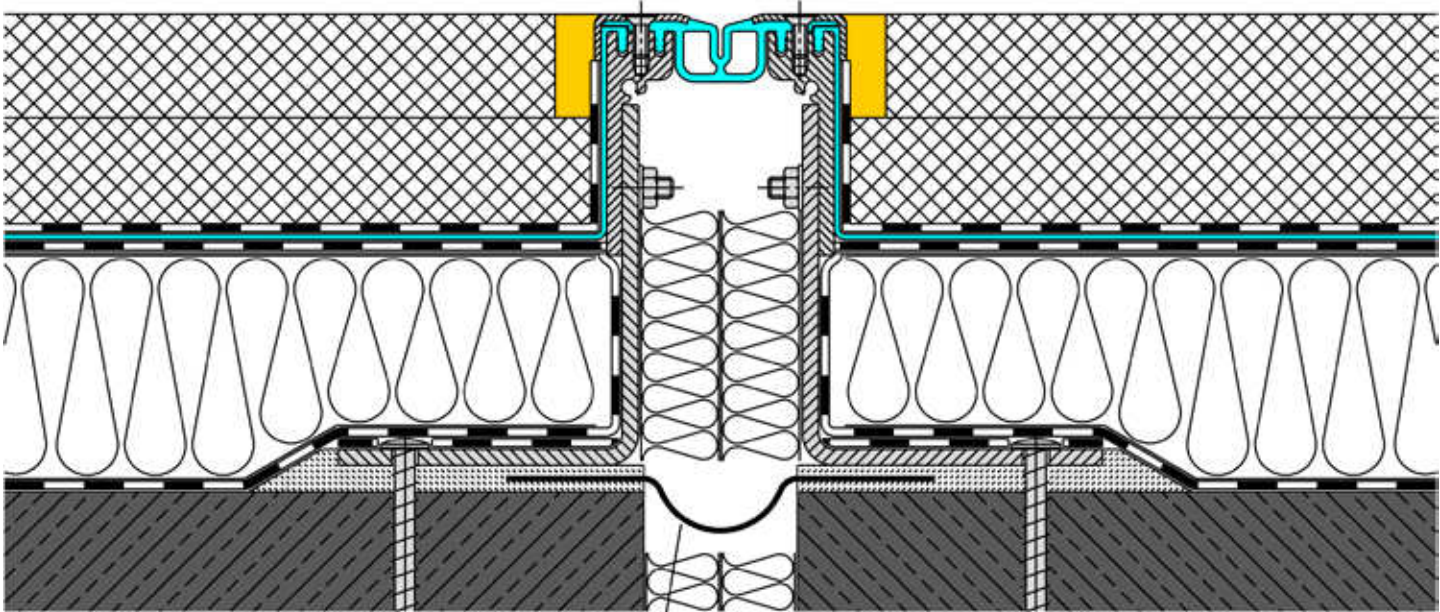
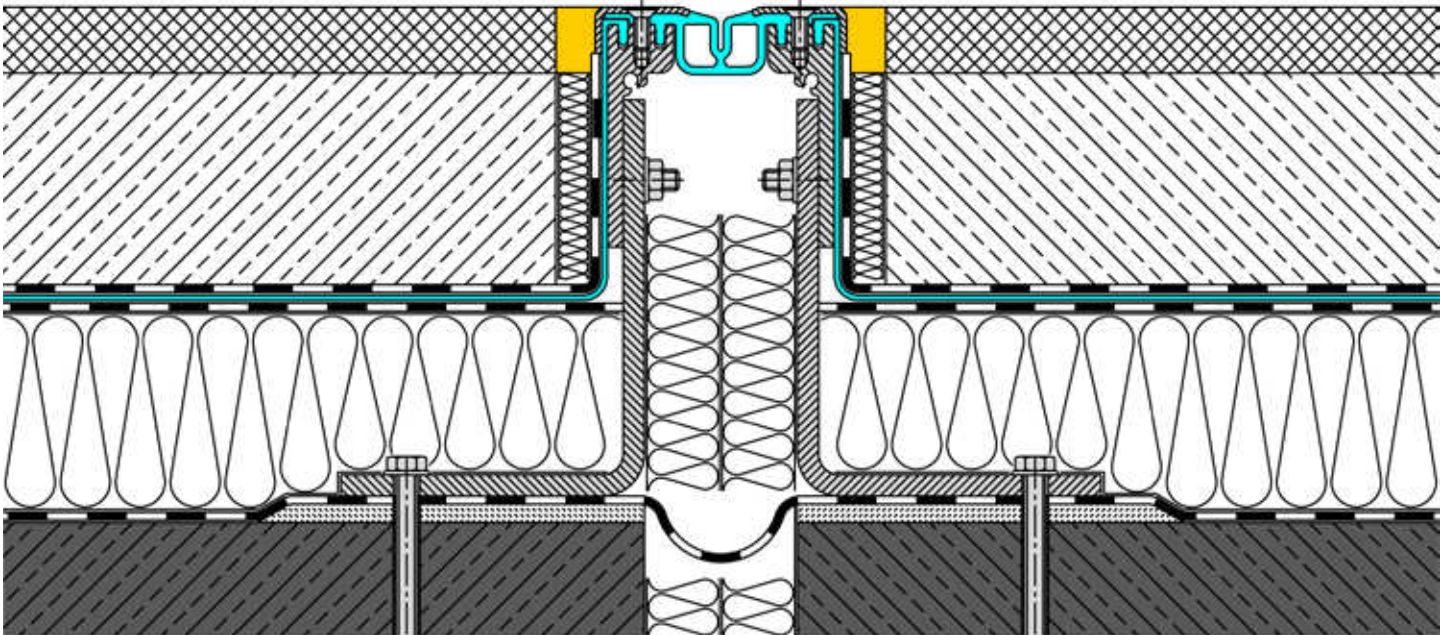


# INSTALLATION EXAMPLES

## EXPANSION JOINT SYSTEMS

### MIGUTAN

Installation example MIGUTAN expansion joint system with long AAS-sheets in connection with thermal insulation



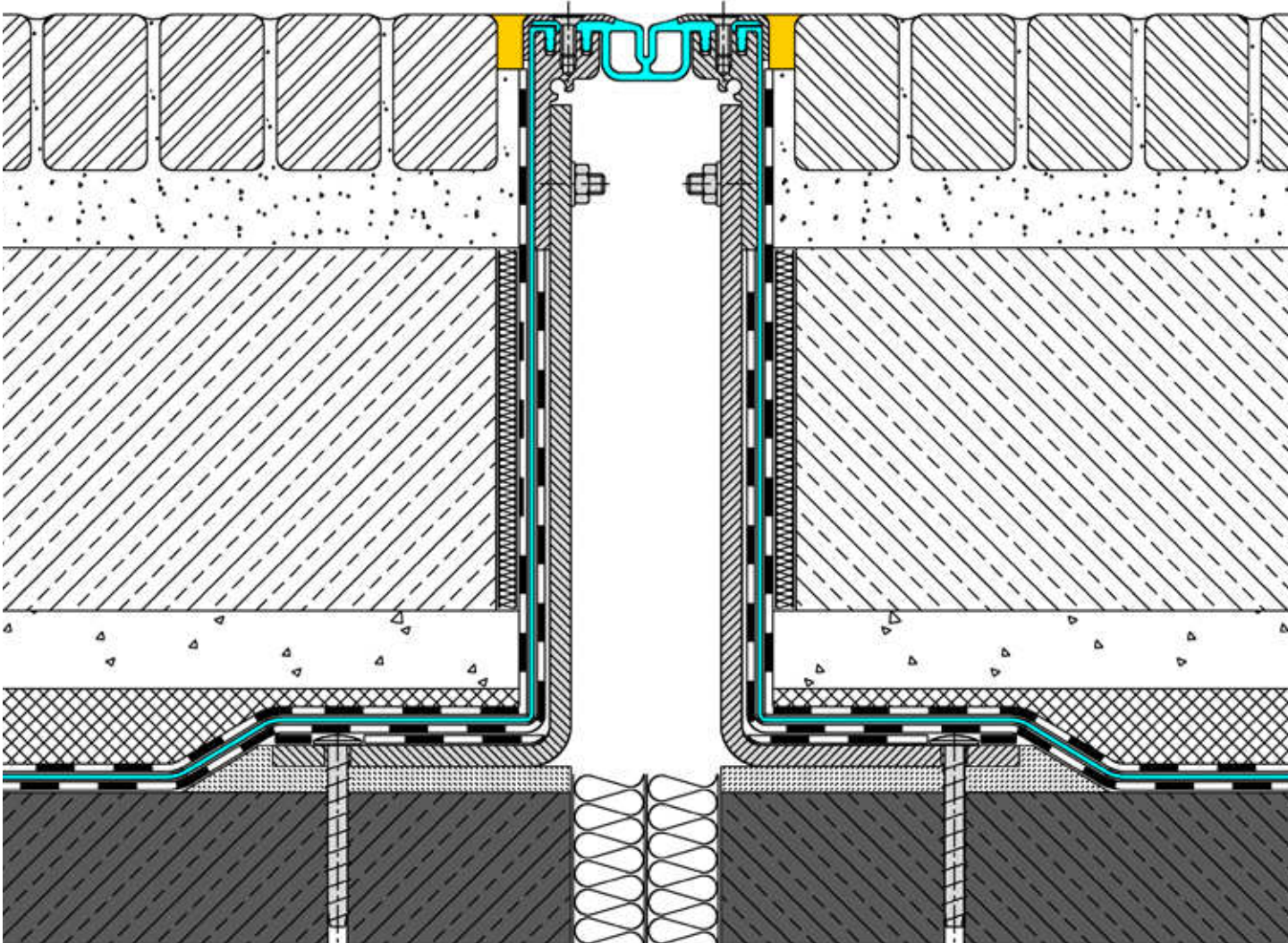
MIGUFOL - Type 101  
vapour barrier

# INSTALLATION EXAMPLES

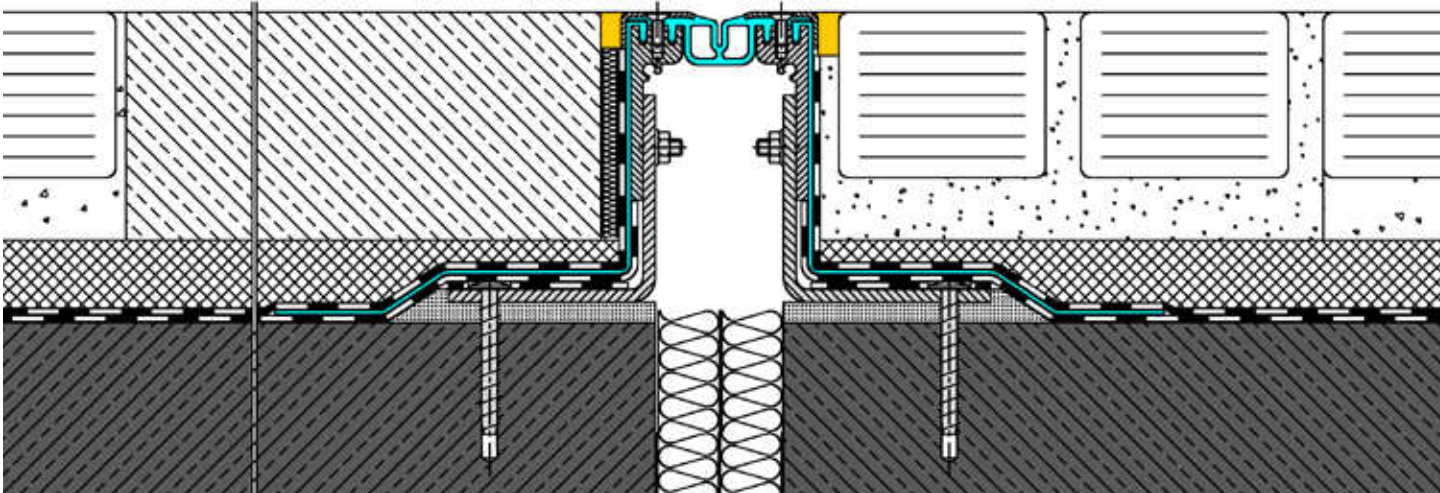
## EXPANSION JOINT SYSTEMS

### MIGUTAN

Installation example MIGUTAN expansion joint system with long AAS-sheets for extremely large installation heights



Installation example MIGUTAN expansion joint system with long AAS-sheets for large installation heights.

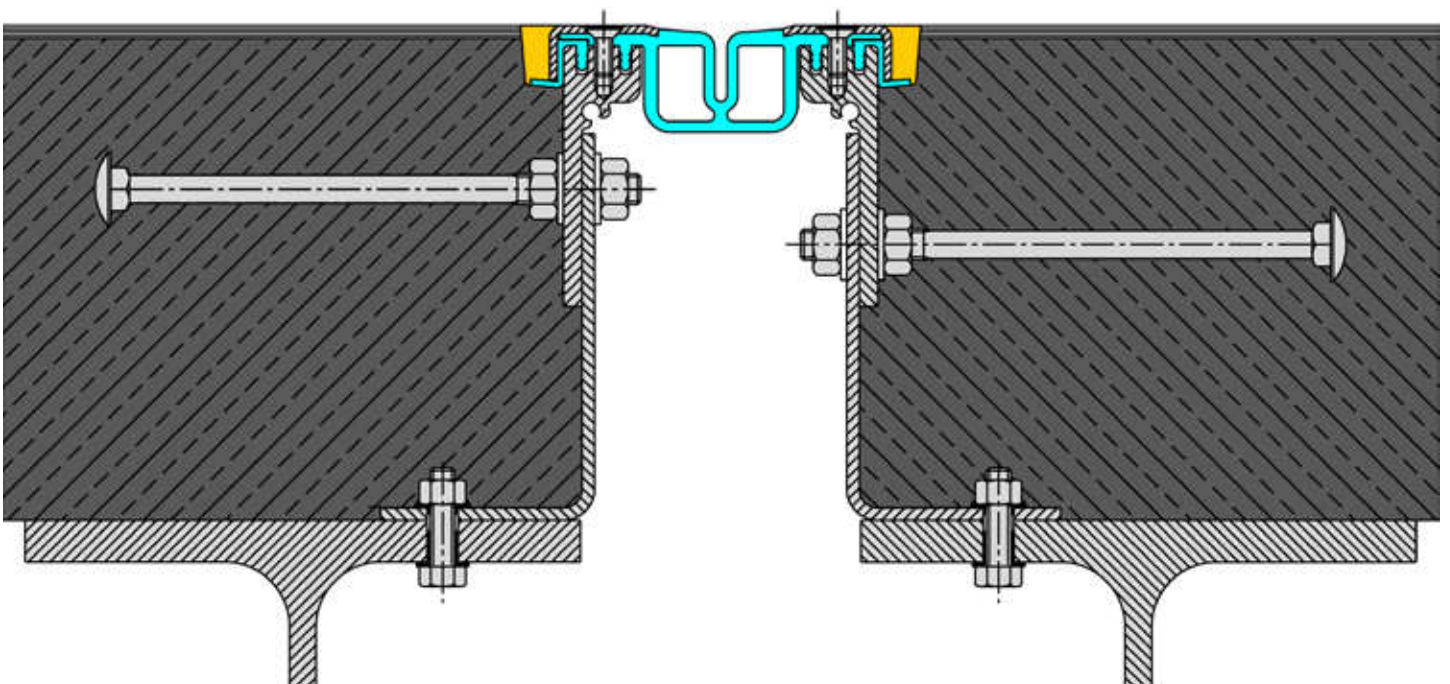
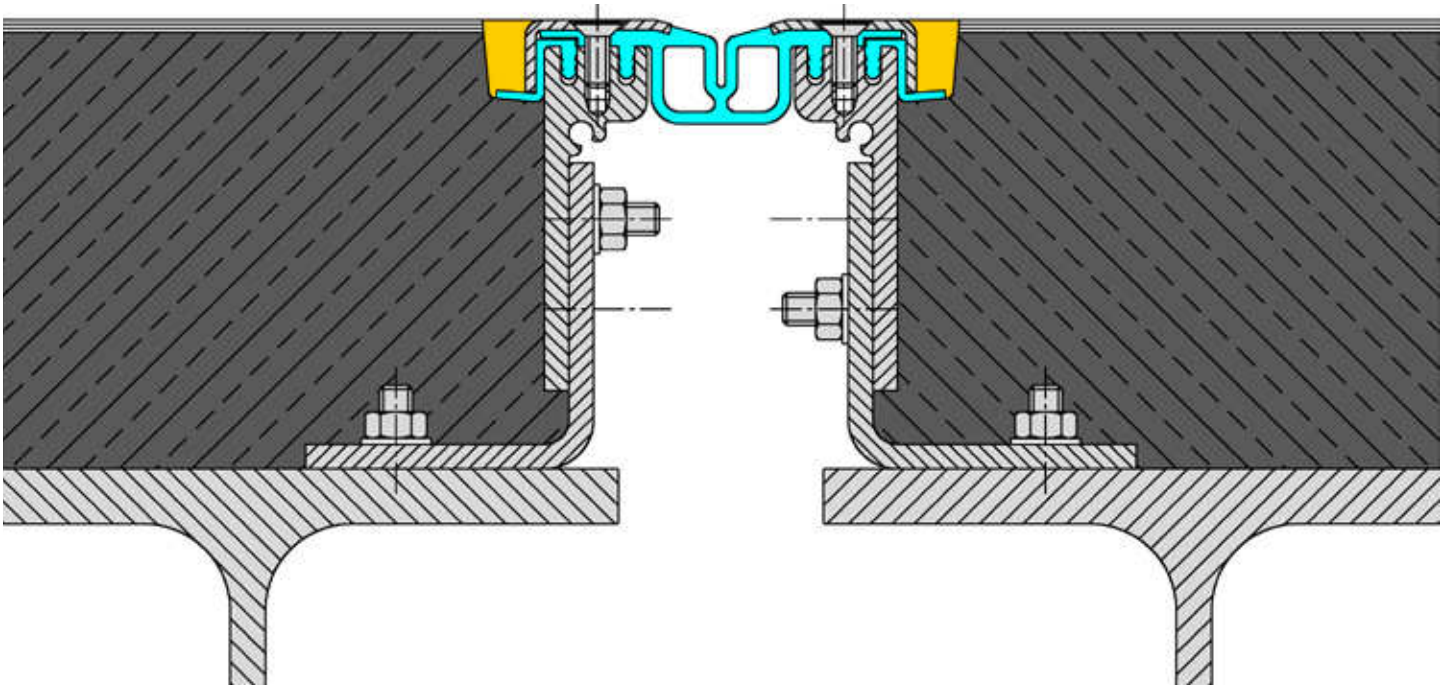


# INSTALLATION EXAMPLES

## EXPANSION JOINT SYSTEMS

### MIGUTAN

Installation example MIGUTAN expansion joint system with short AAS-sheets in connection with insitu-concrete.

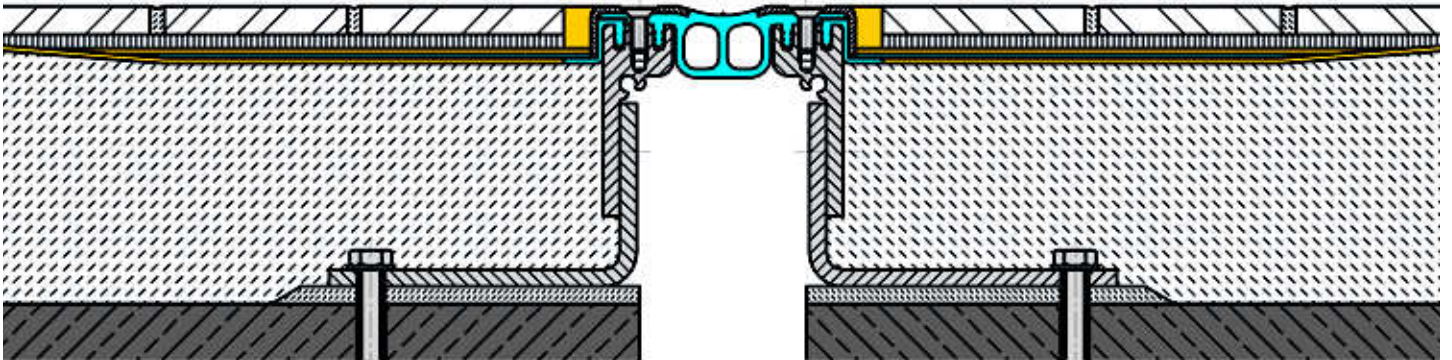


# INSTALLATION EXAMPLES

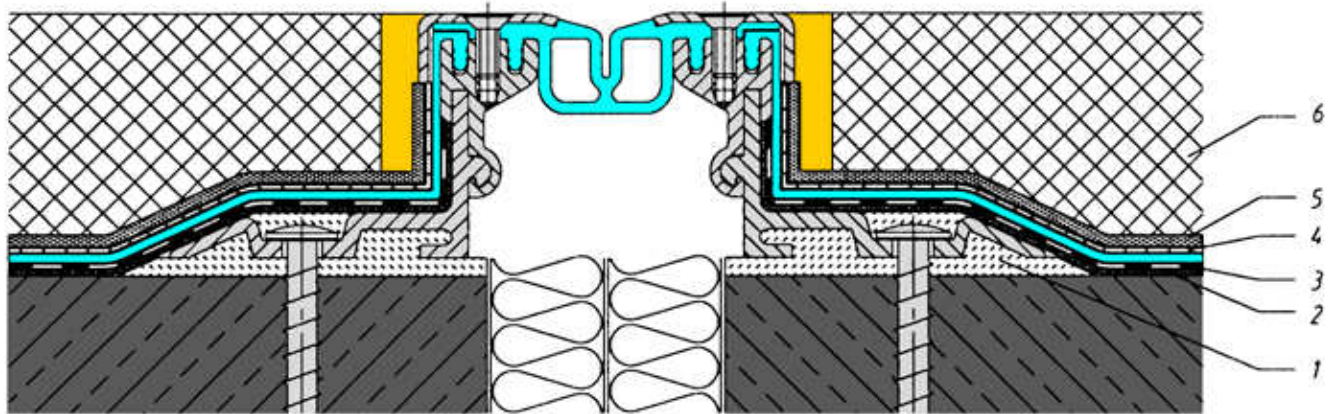
## EXPANSION JOINT SYSTEMS

### MIGUTAN

Installation example MIGUTAN expansion joint system in connection with flexible waterproofing slurry  
Profile FPG 90/100 NI XA with MIGUTRIX fibre fabric bonded sheets (installation on concrete slab)



Installation example MIGUTAN expansion joint system in connection with liquid membrane  
Profile FP 90/60 NI (long AAS sheets)



1 = Epoxy mortar

2 = Prime bottom side of AAS sheets, concrete and fixing angle with bitumen primer and let it dry

3 = Width of AAS sheets (horizontal part 150 mm) need to be adapted on site and glued without hollow spaces by means of hot bitumen to the ground

4 = Clean upper side of AAS sheet with acetone, prime and dry

5 = Spray on liquid membrane

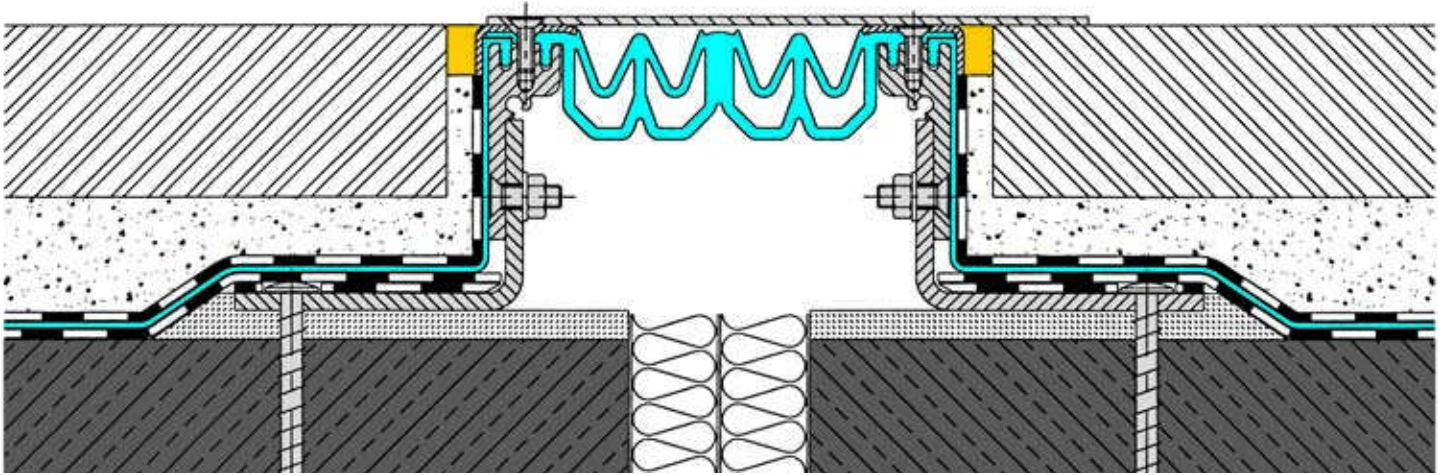
6 = Asphalt

# INSTALLATION EXAMPLES

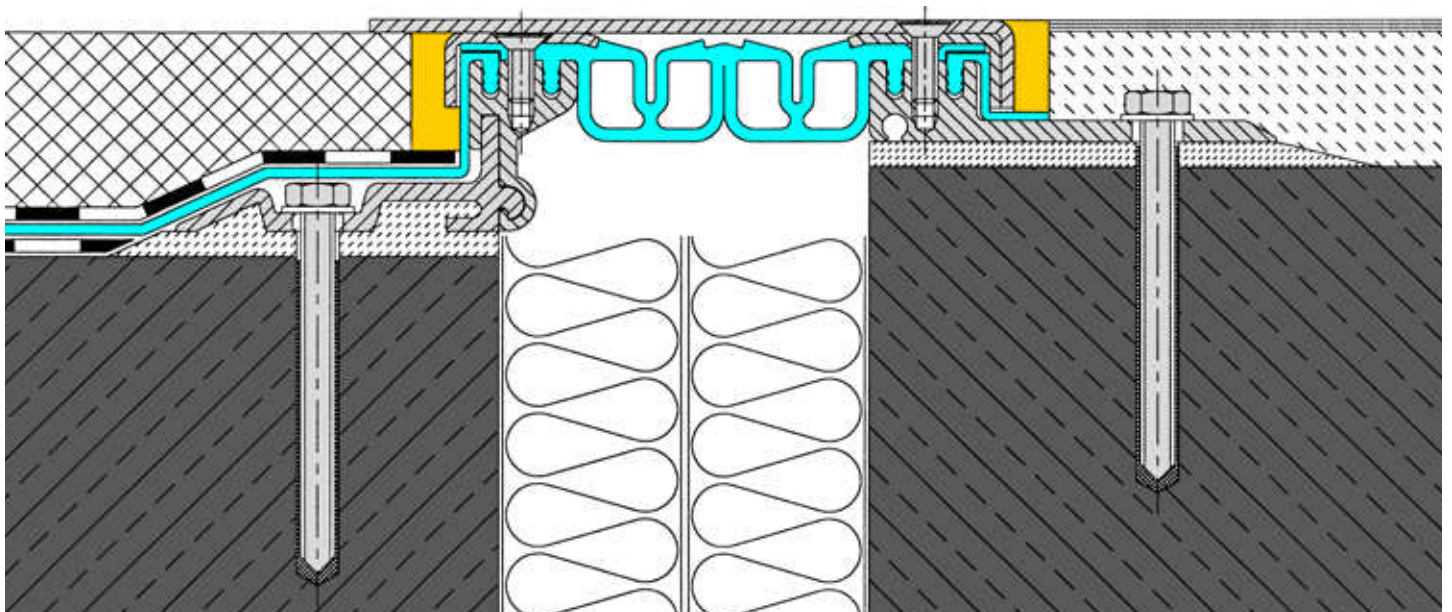
## EXPANSION JOINT SYSTEMS

### MIGUTAN

Example: Profile FP 170/100 NI (long AAS sheets) with cover plate APG for wide joints and large movement  
(105 mm + 65 mm / - 40 mm)



Example: Combined profile FP 130/45 NI (long AAS sheets) with FP 130/25 NI (short AAS sheets)  
with cover plate APG for wide joints and large movement (90 mm ± 45 mm)

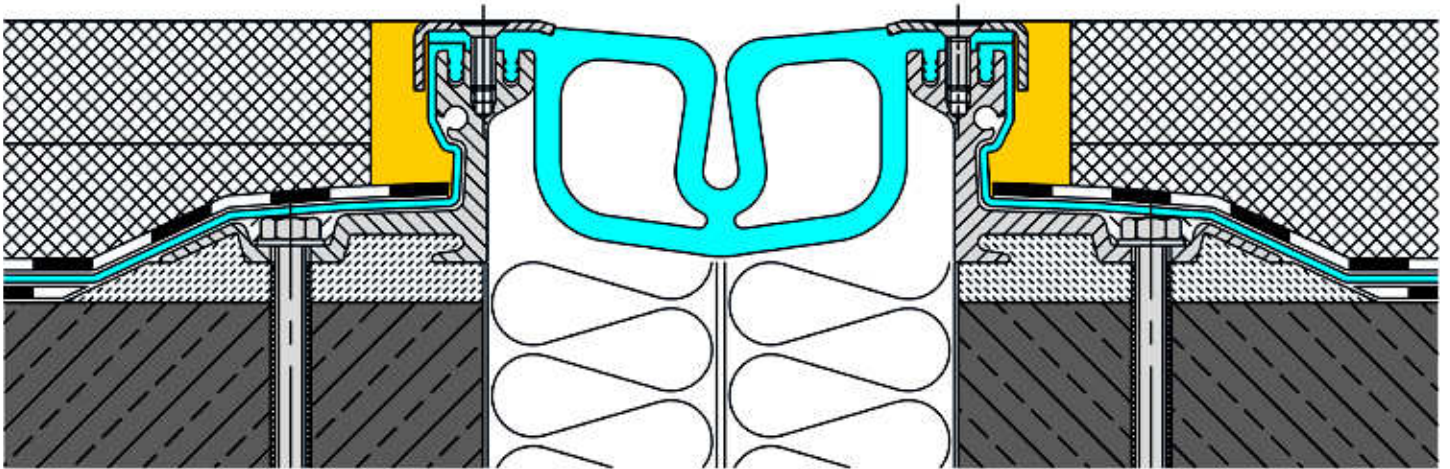


# INSTALLATION EXAMPLES

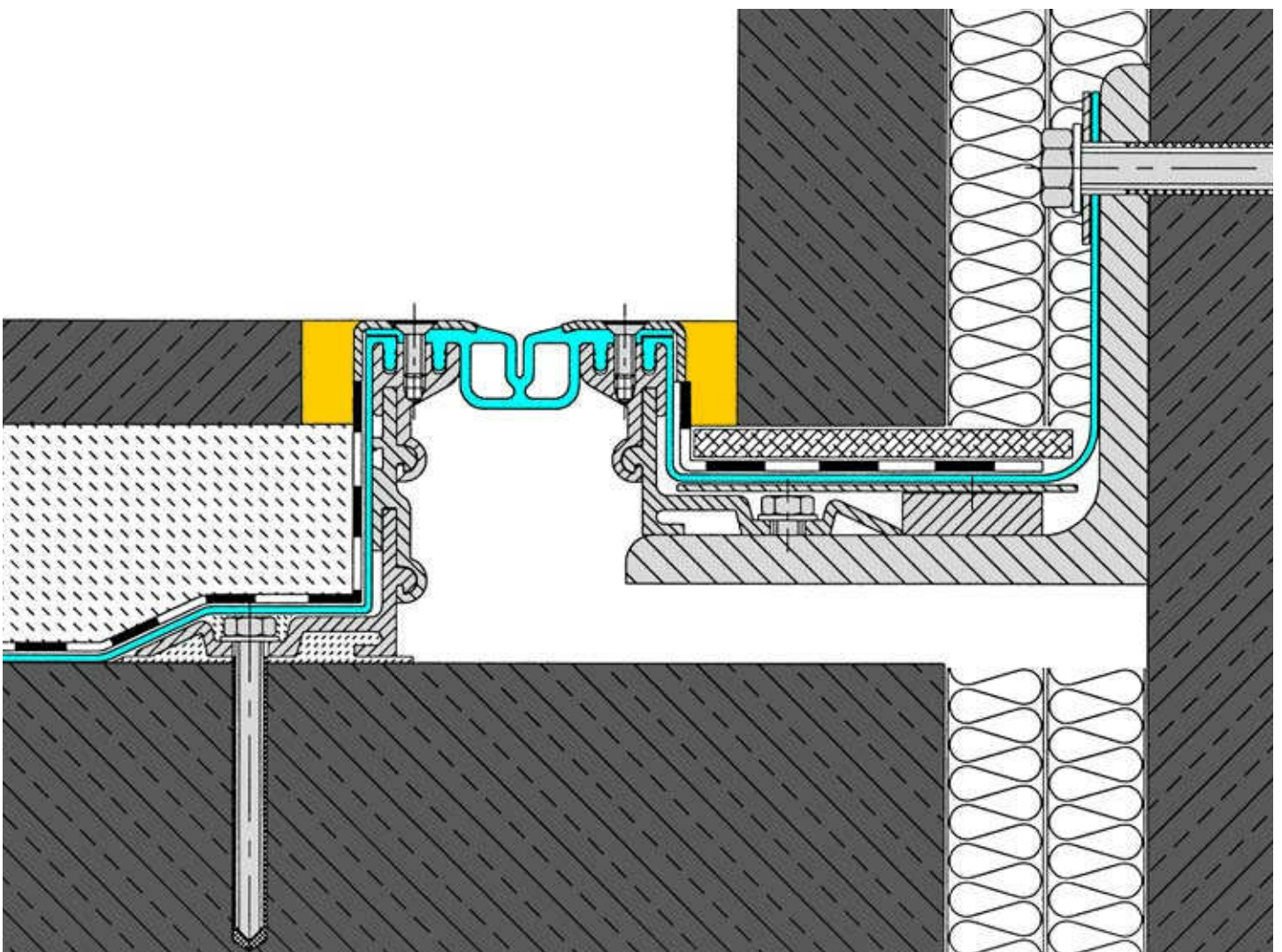
## EXPANSION JOINT SYSTEMS

### MIGUTAN

Example: Profile FP 155/60 NI (long AAS Sheets) for wide joints and large movement (120 mm ± 60 mm)



Example: MIGUTAN expansion joint system with long AAS sheets and special wall-connection

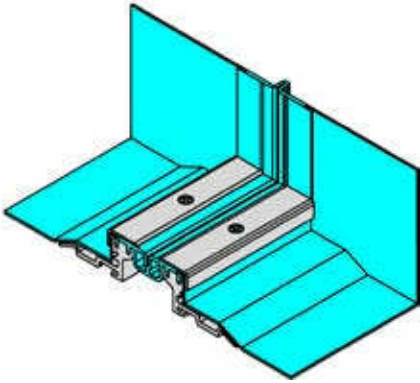


# TERMINATIONS/INTERSECTIONS

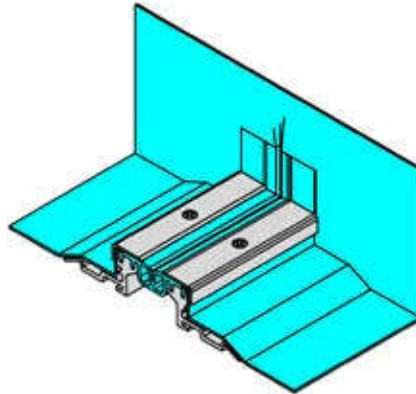
EXAMPLES

MIGUTAN

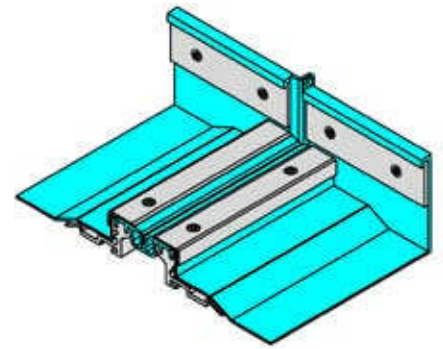
A 1



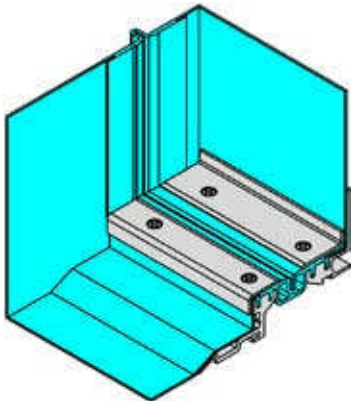
A 2



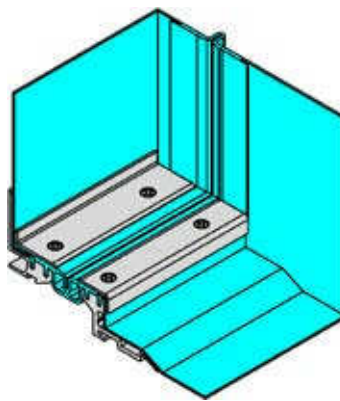
B



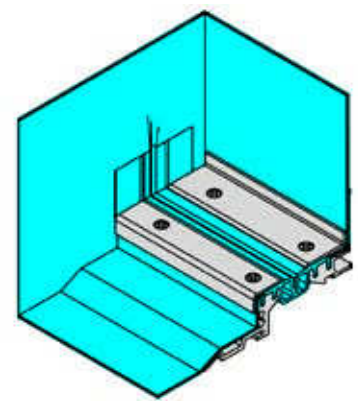
C right



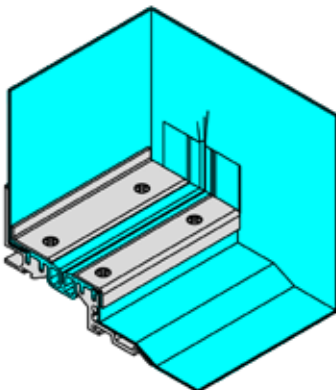
C left



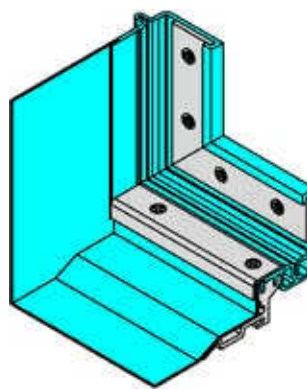
D right



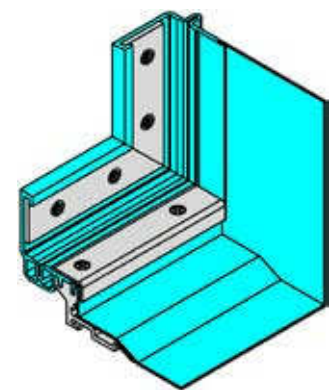
D left



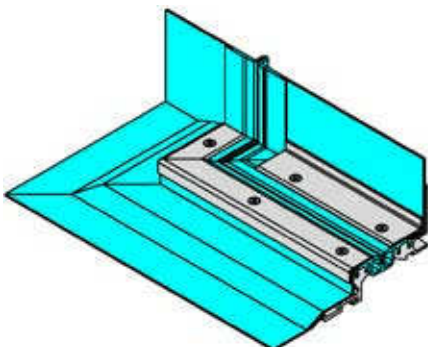
E right



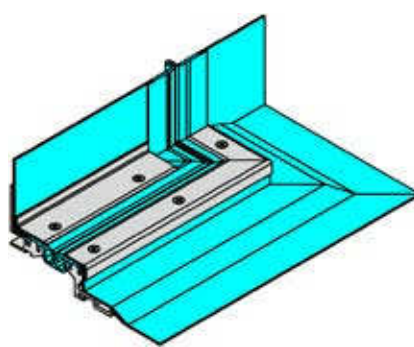
E left



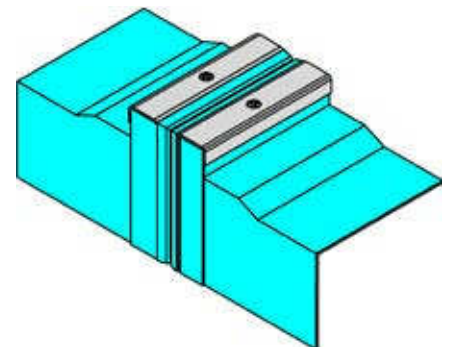
F right



F left



G 1

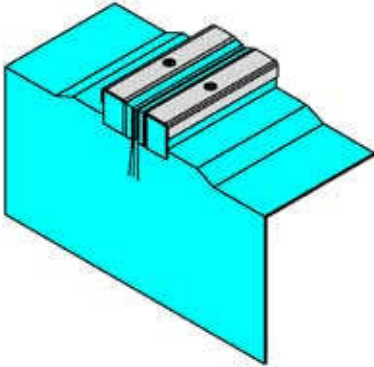


# TERMINATIONS/INTERSECTIONS

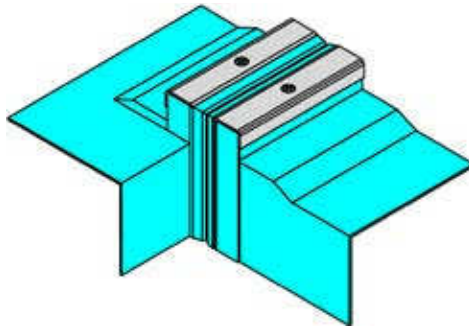
EXAMPLES

## MIGUTAN

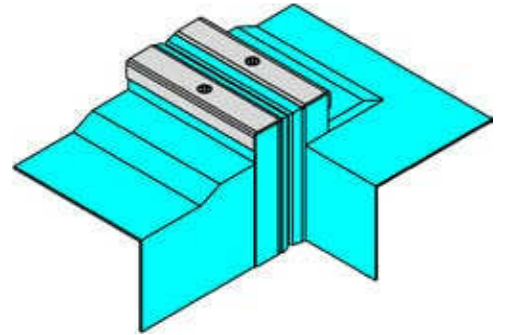
G 2



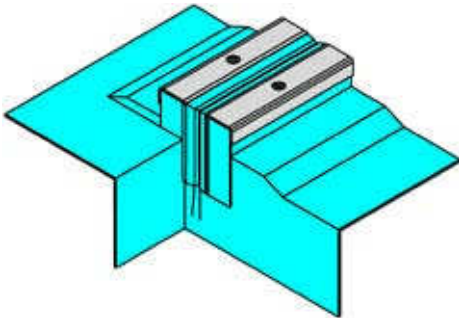
H 1 right



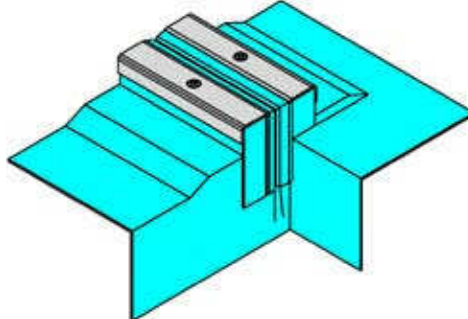
H 1 left



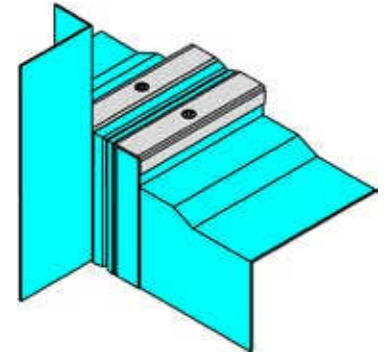
H 2 right



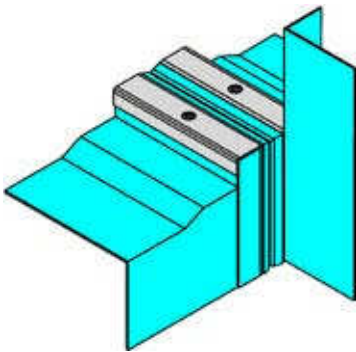
H 2 left



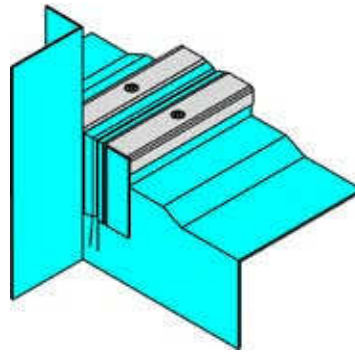
I 1 right



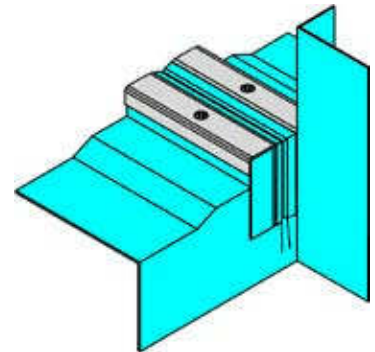
I 1 left



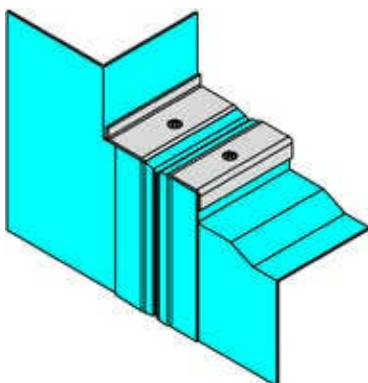
I 2 right



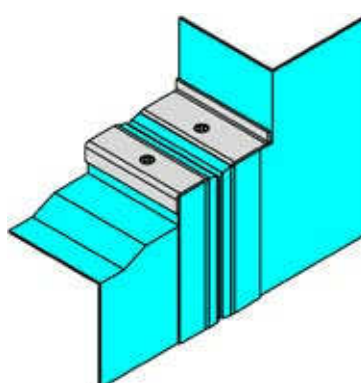
I 2 left



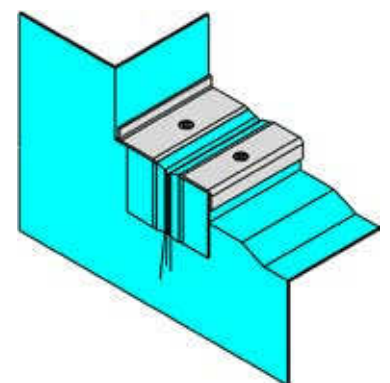
J 1 right



J 1 left



J 2 right

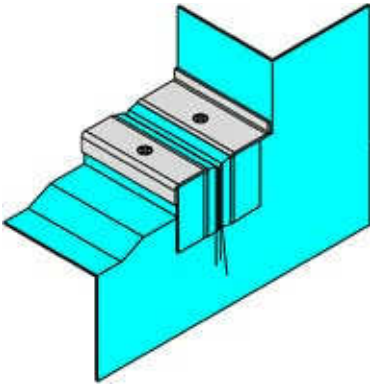


# TERMINATIONS/INTERSECTIONS

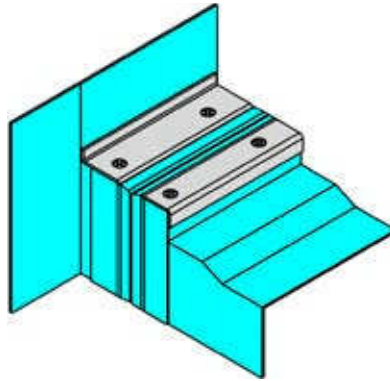
EXAMPLES

## MIGUTAN

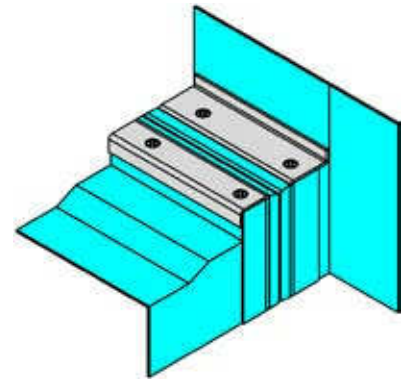
J 2 left



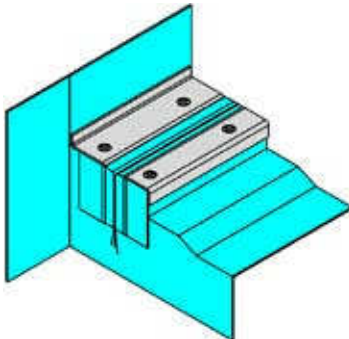
K 1 right



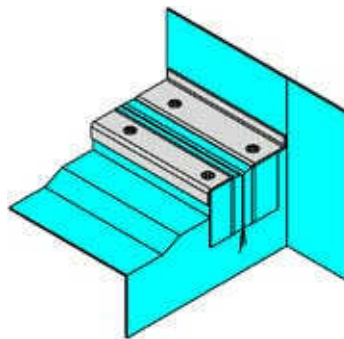
K 1 left



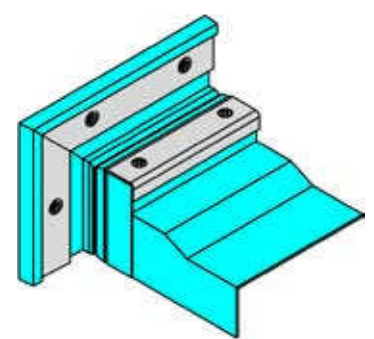
K 2 right



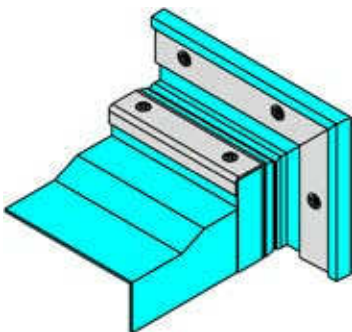
K 2 left



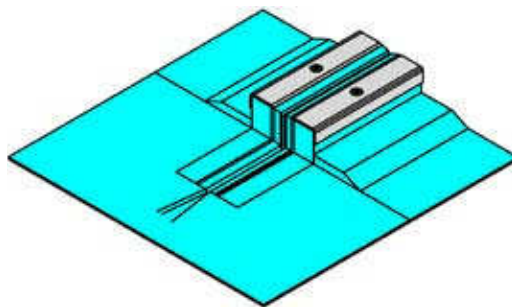
L right



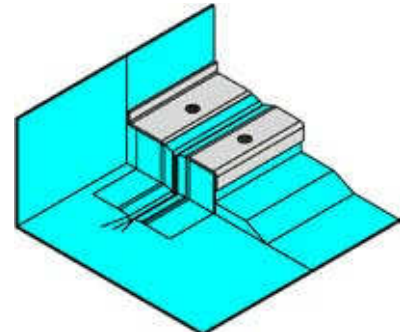
L left



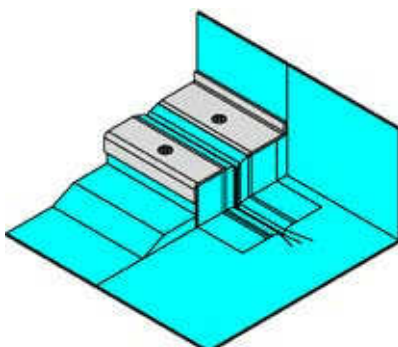
M



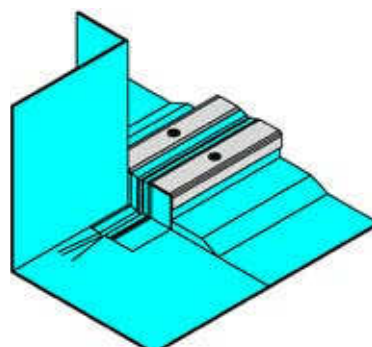
N right



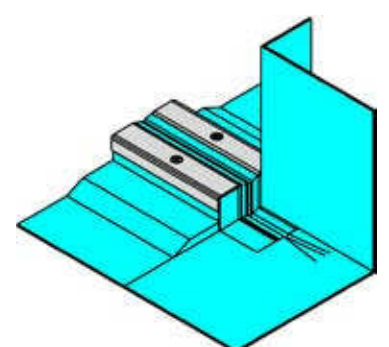
N left



O right



O left

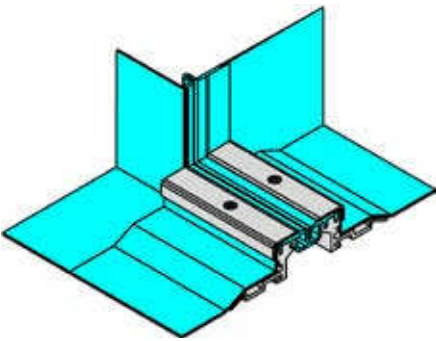


# TERMINATIONS/INTERSECTIONS

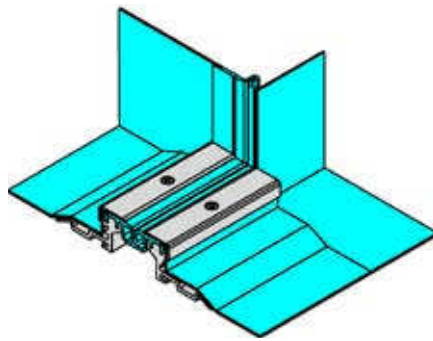
EXAMPLES

## MIGUTAN

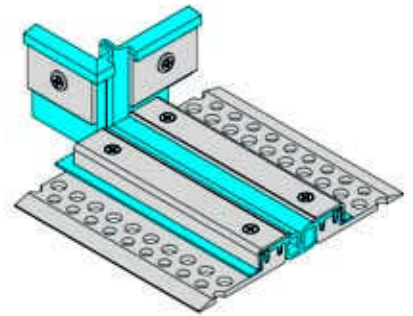
P right



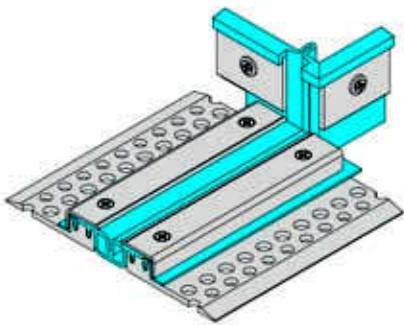
P left



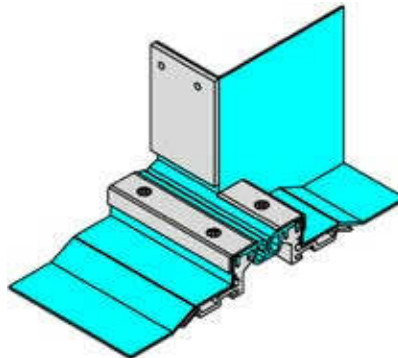
P 1 right



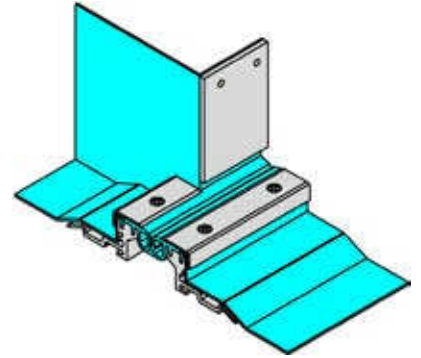
P 1 left



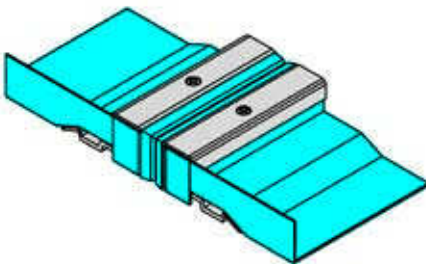
Q right



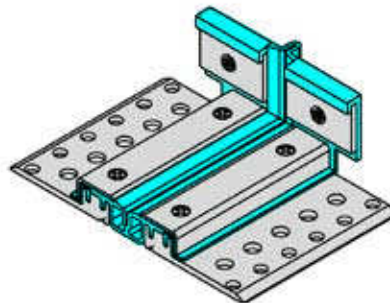
Q left



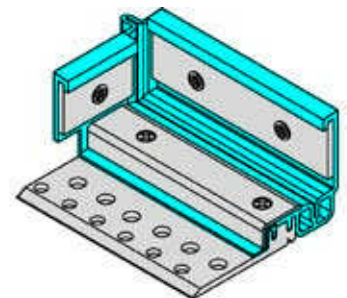
R



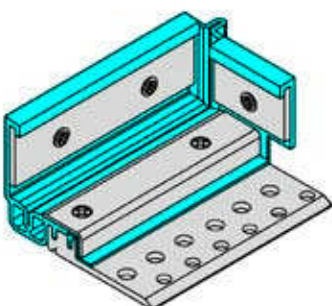
S



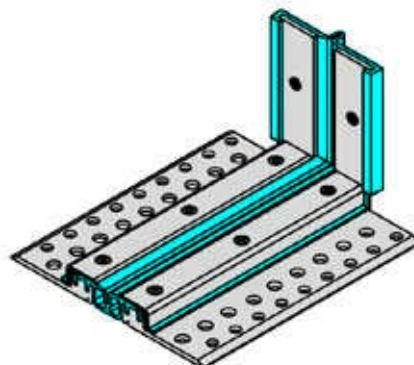
T right



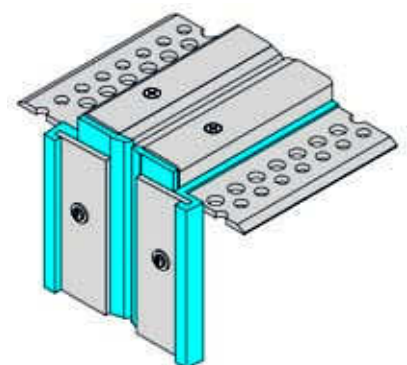
T left



U



U 1

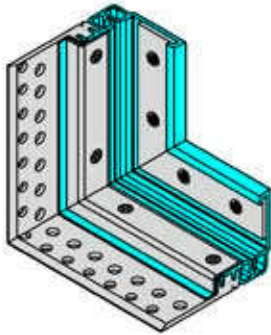


# TERMINATIONS/INTERSECTIONS

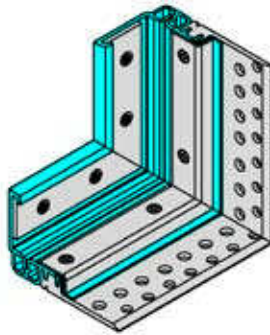
EXAMPLES

## MIGUTAN

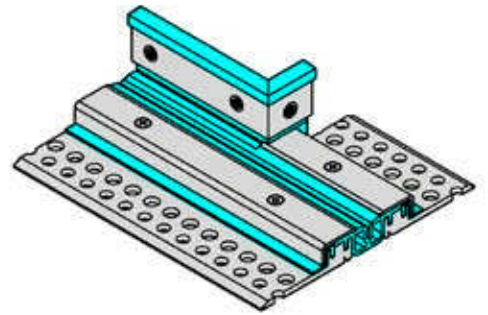
V right



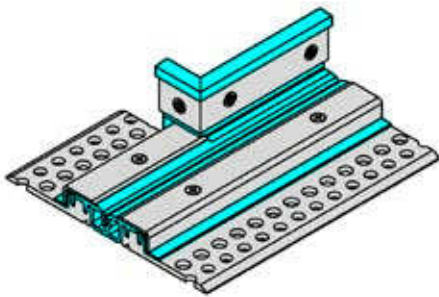
V left



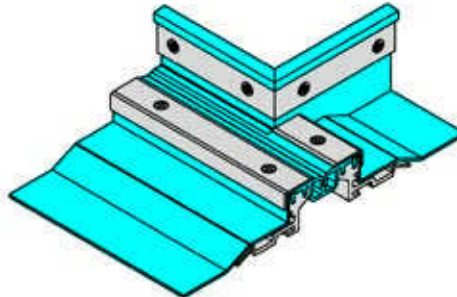
W right



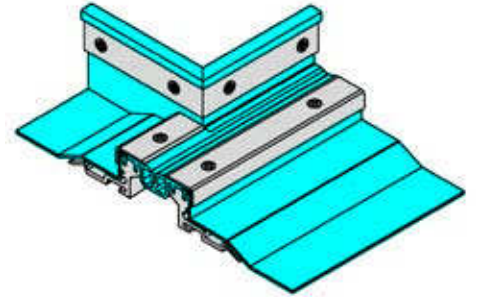
W left



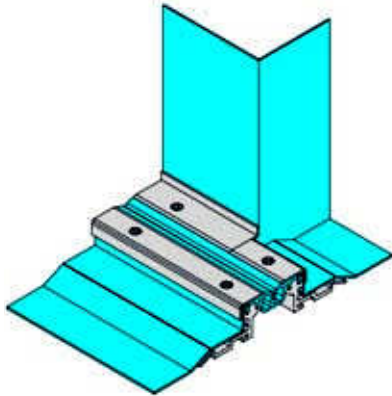
W 1 right



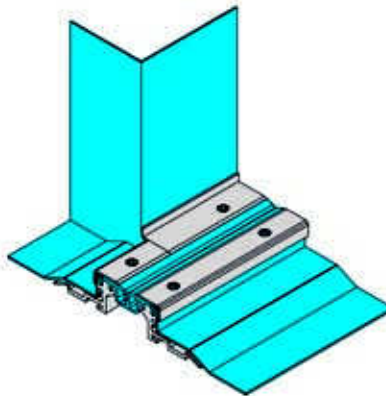
W 1 left



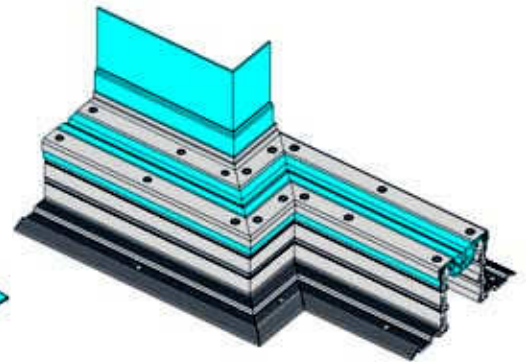
W 2 right



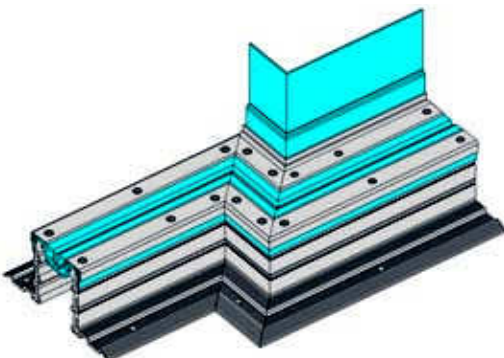
W 2 left



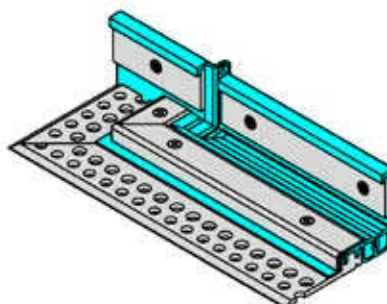
W 3 right



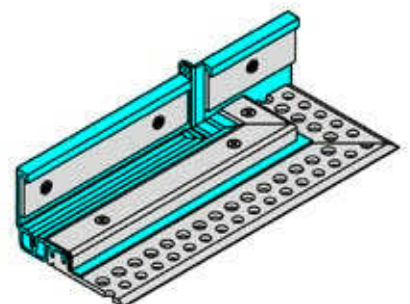
W 3 left



X right



X left

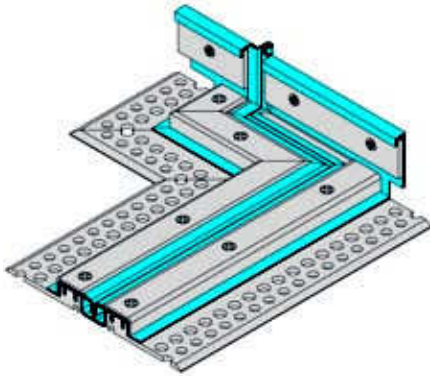


# TERMINATIONS/INTERSECTIONS

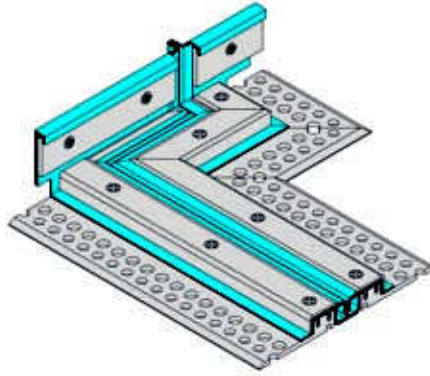
EXAMPLES

## MIGUTAN

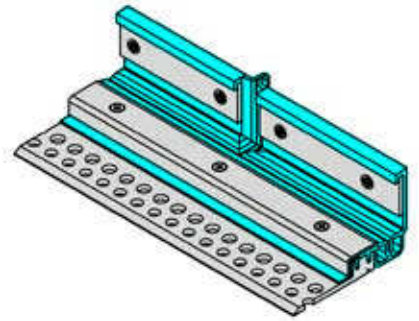
X 1 right



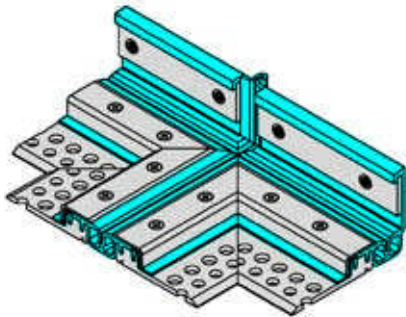
X 1 left



Y

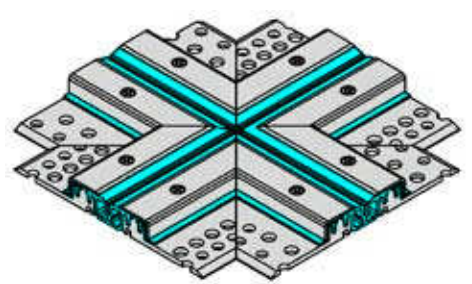
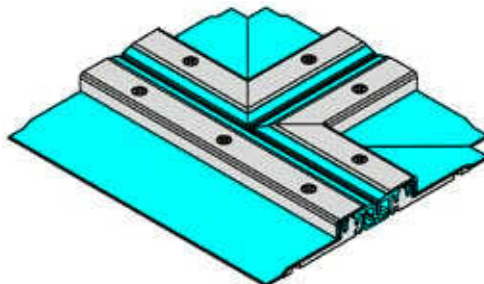
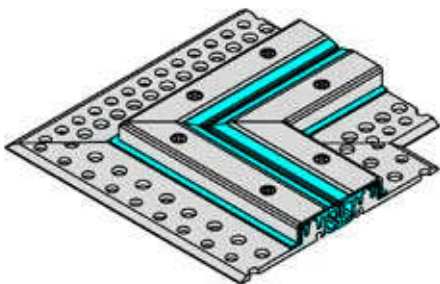


Z

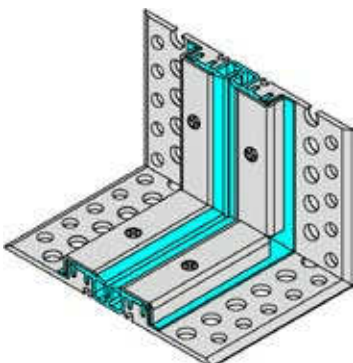


The shown terminations/intersection A–Z are a selection of possible solutions only.  
We are able to fabricate watertight terminations/intersections for each joint run.

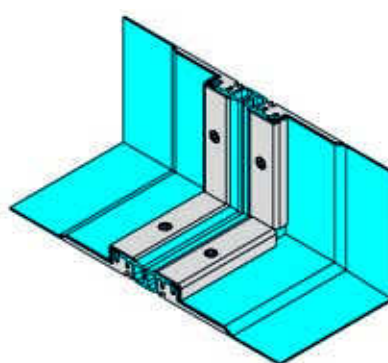
Standard intersections



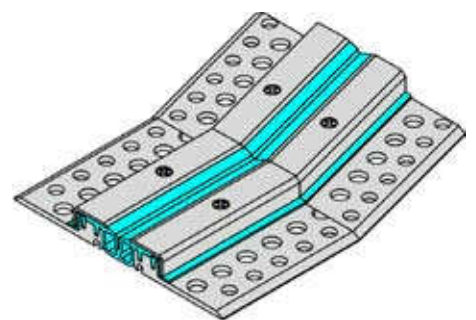
Upstand short sheets



Upstand long sheets



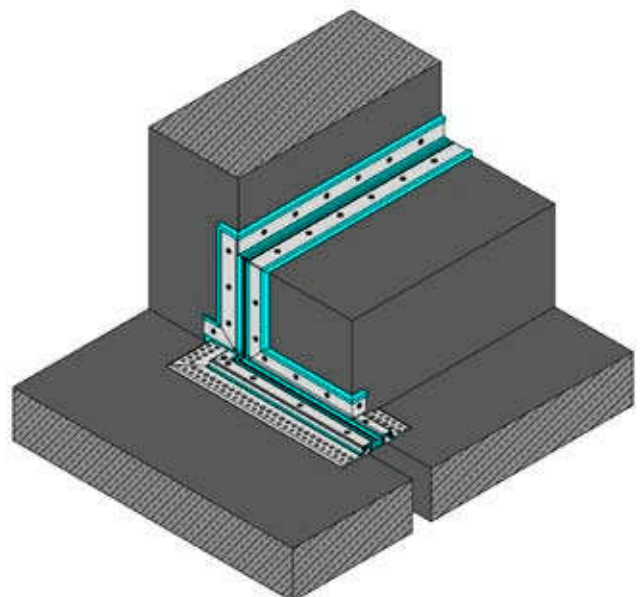
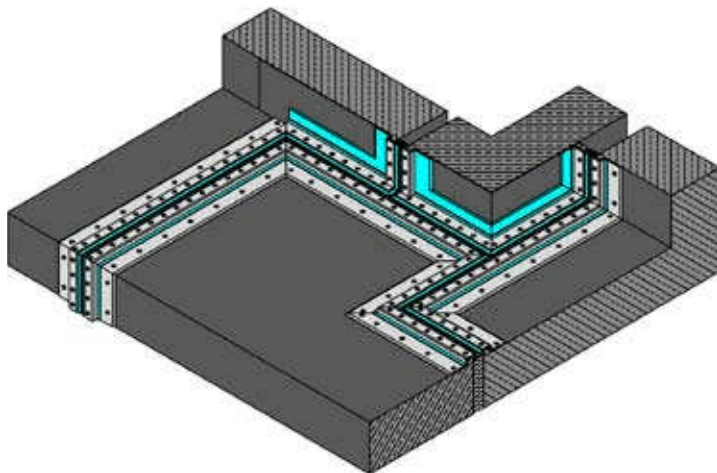
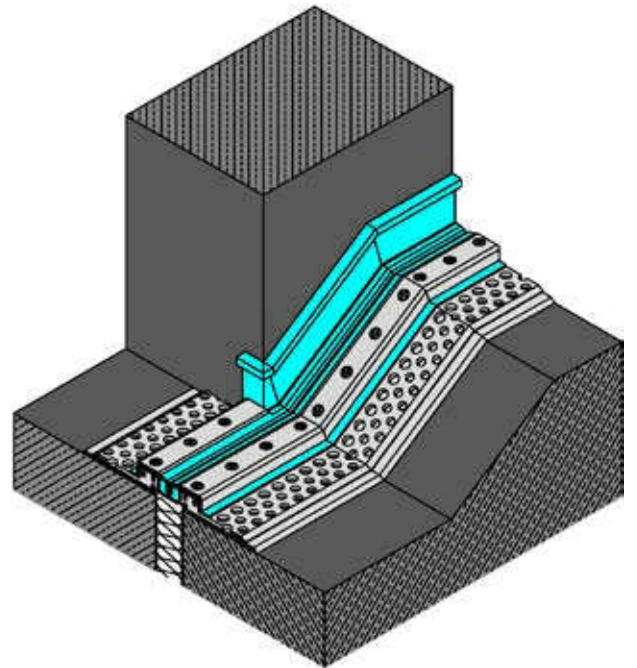
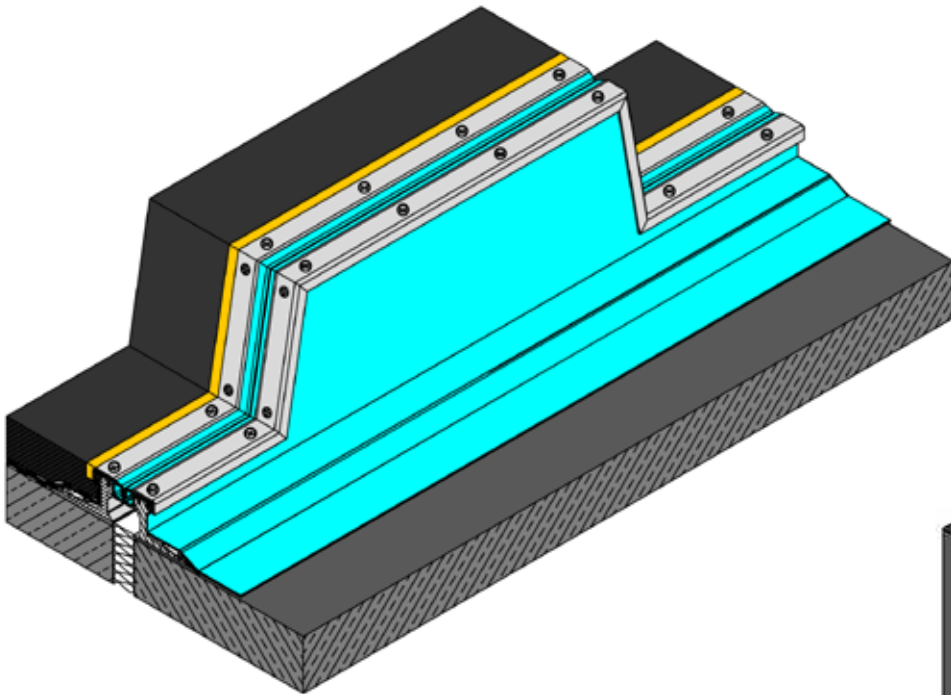
Slope end



# TRANSITIONS

EXAMPLES

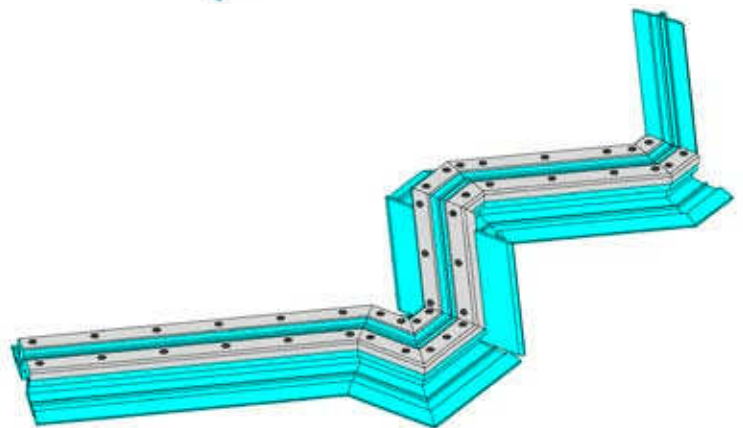
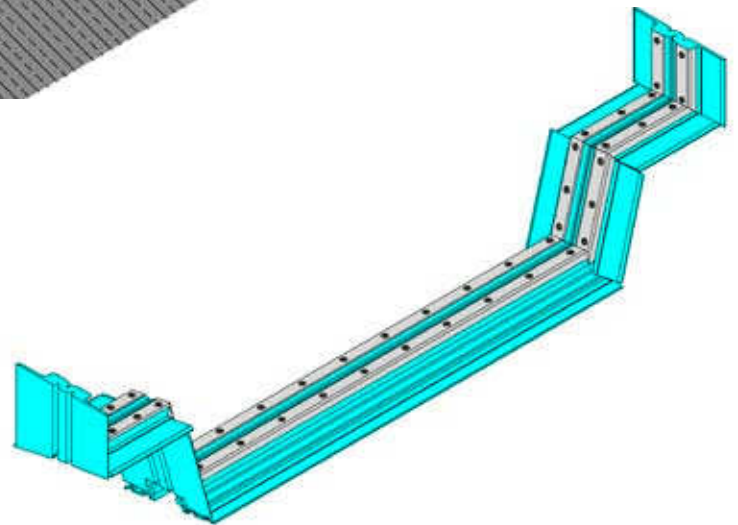
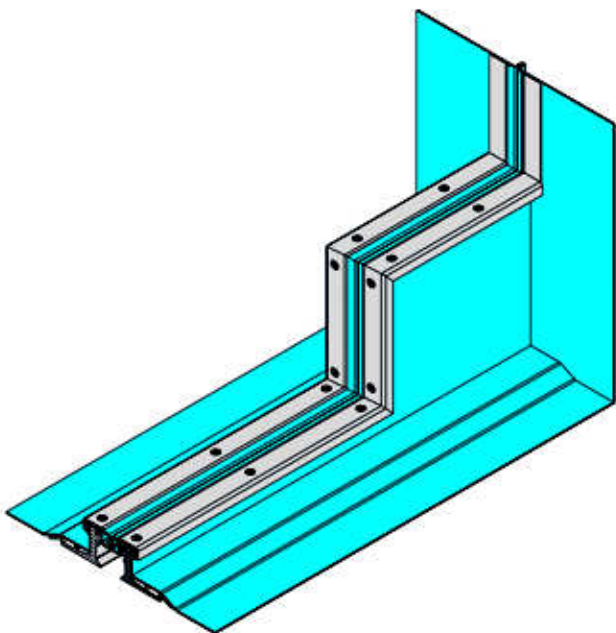
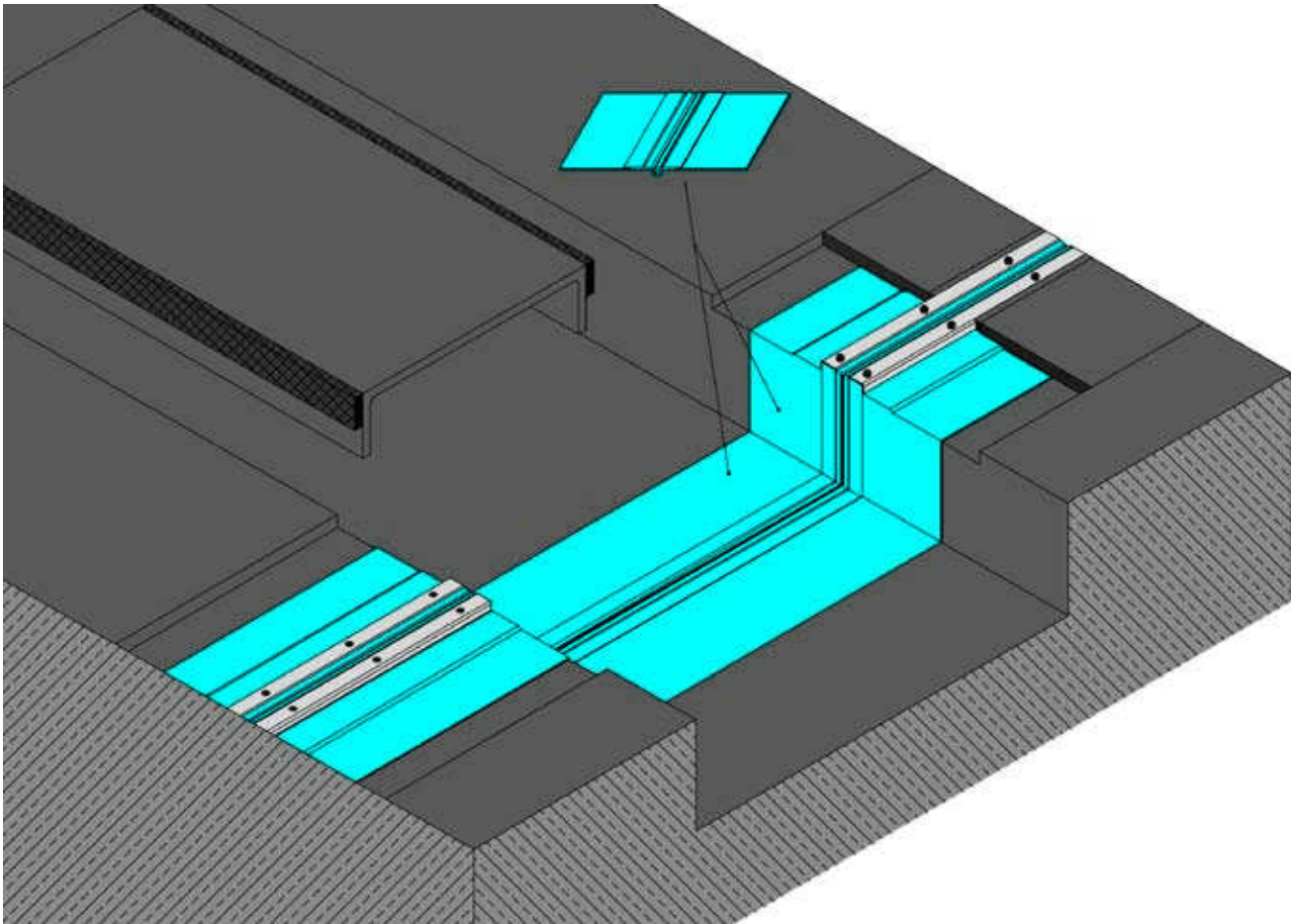
MIGUTAN



# TRANSITIONS

EXAMPLES

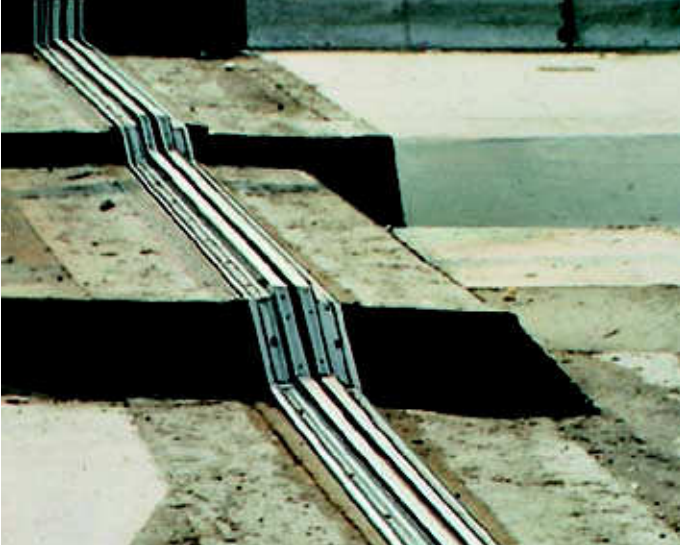
MIGUTAN



# EXAMPLES

EXPANSION JOINT SYSTEMS

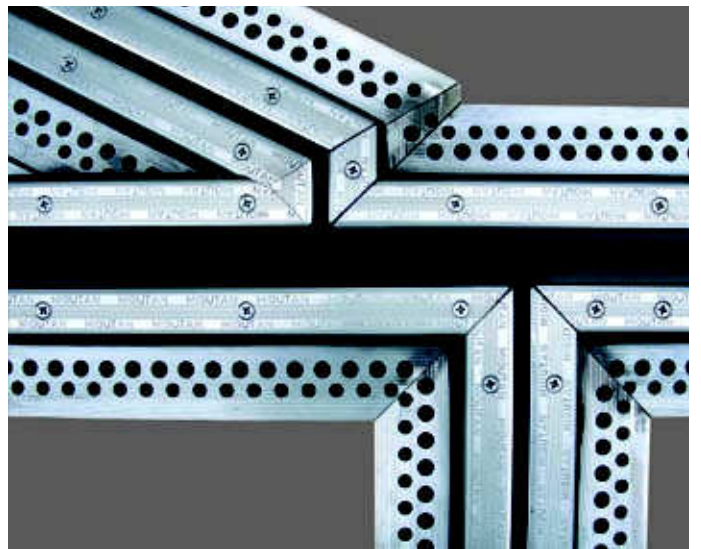
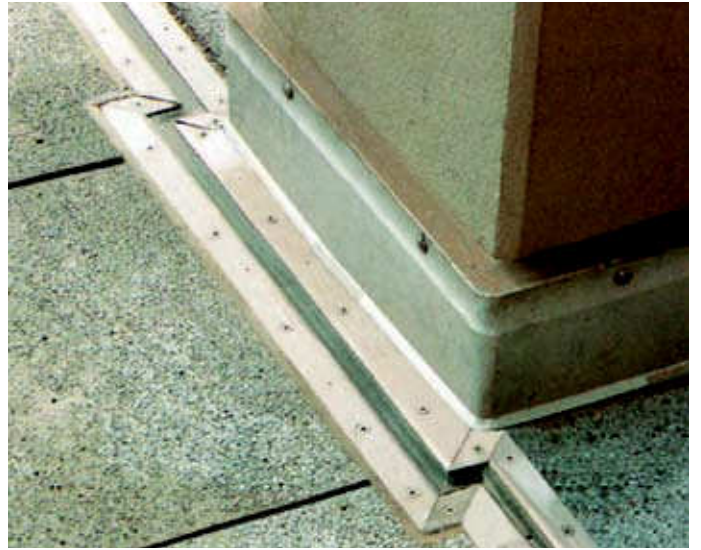
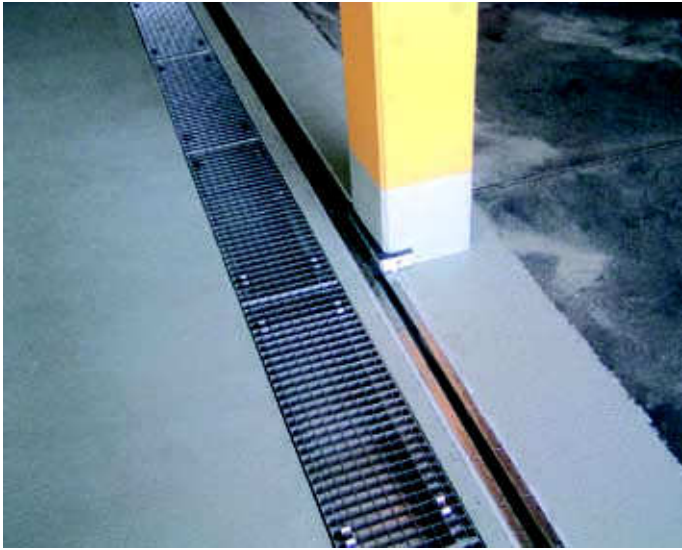
## MIGUTAN



# EXAMPLES

EXPANSION JOINT SYSTEMS

## MIGUTAN





**MIGUA**  
EXPANSION JOINT SYSTEMS

**MIGUTAN**  
WATERTIGHT EXPANSION JOINT SYSTEMS

**MIGUTRANS**  
HEAVY DUTY EXPANSION JOINT SYSTEMS

**MIGUPREN**  
WATERTIGHT CORRUGATED JOINTING SYSTEMS FOR FLAT ROOFS

**MIGUNOX**  
SOLID STAINLESS STEEL / STEEL HEAVY DUTY SYSTEMS



### **WORLDWIDE**

More than 10 million metres of our profiles have been performing for decades to the complete satisfaction of Architects, Builders and Owners.

Our selected Representatives and Partners all over the world – backed by our Export and Engineering Departments in Germany – give best advice and solutions for standard, special and unique situations.

MIGUA – over 50 years experience in manufacture and supply of expansion joint systems – regarded as market leaders throughout Europe.

Please contact us to discuss your requirements and to obtain samples for evaluation.

**MIGUA FUGENSYSTEME GMBH & CO. KG**  
P.O.Box 1260, D-42479 Wuelfrath  
Dieselstrasse 20, D-42489 Wuelfrath  
Phone +49 (0)20 58/774-0, Fax +49 (0)20 58/774-48  
e-Mail [info@migua.de](mailto:info@migua.de), Internet [www.migua.com](http://www.migua.com)