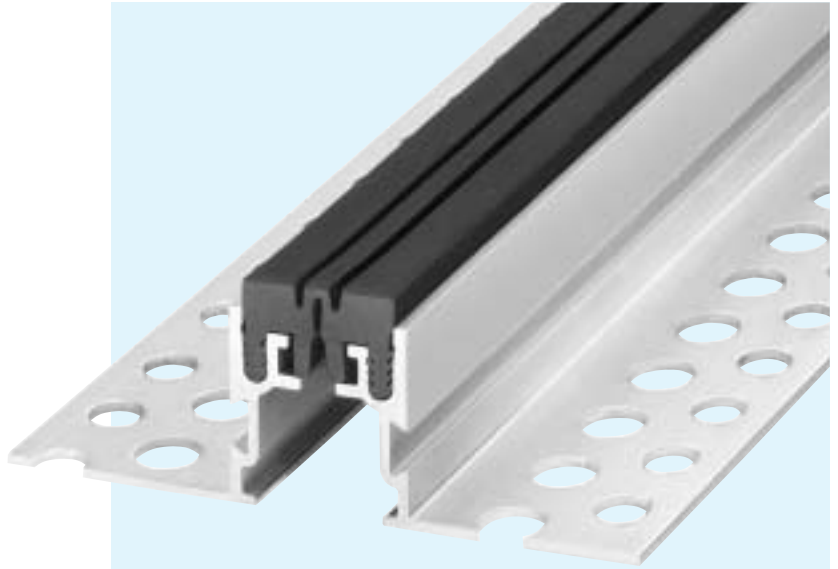


# SERIES FT 35/...

FOR FLOORS WITH CARPETS

## EXPANSION JOINT SYSTEMS

- INSERT REPLACEABLE AT ANY TIME
- POSITIVE CONNECTION OF PRODUCTION LENGTHS BY STAGGERING THE JOINTS
- ADJUSTABLE INSTALLATION HEIGHTS
- MOVEMENT CAPACITY 10 MM
- FOR JOINT WIDTHS UP TO 30 MM

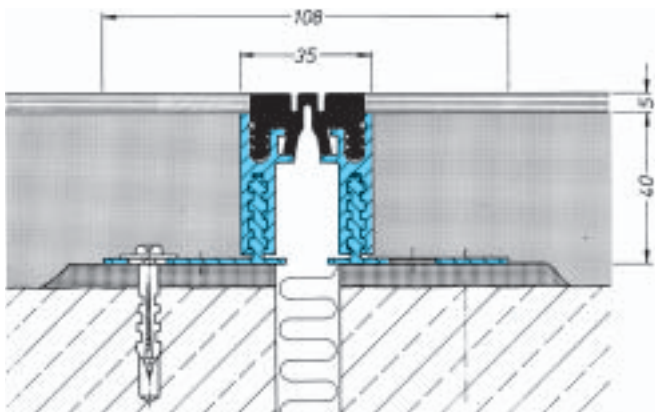


### TECHNICAL DATA

Profile	Joint width max. mm	Total movement mm	Visible width of profile mm	Total width of profile mm	Installation height mm	*Load capacity private cars + lorries (DIN 1072) kN	Load capacity fork lift trucks (DIN 1055) kN
FT 35/1500	30	10 +/-5	35	108	15	30	not allowed
FT 35/2000	30	10 +/-5	35	108	20	30	not allowed
FT 35/2500	30	10 +/-5	35	108	25	30	not allowed
FT 35/3500	30	10 +/-5	35	125	35	30	not allowed
FT 35/5000	30	10 +/-5	35	125	50	30	not allowed
FT 35/3035	30	10 +/-5	35	108	30, 35	30	not allowed
FT 35/4055	30	10 +/-5	35	108	40, 45, 50, 55	30	not allowed
FT 35/6075	30	10 +/-5	35	108	60, 65, 70, 75	30	not allowed
FT 35/7590	30	10 +/-5	35	108	75, 80, 85, 90	30	not allowed
FT 35/90105	30	10 +/-5	35	108	90, 95, 100, 105	30	not allowed

\*not designed for permanent use

Profile is supplied with flush mounted distance insert. The top edge of the aluminium profile can be used as a screeding guide. The distance insert protects the profile until covering is laid. This method avoids damage of profile caused by site traffic.



FT 35/4055

Scale 1 : 2

### MATERIAL

Aluminium side plates with perforated aluminium mounting brackets. Flexible high quality elastomeric insert, long wearing, weather resistant, temperature resistant (-30°C to + 120°C), extensively resistant to oils, acids and bitumen.

**Upstand: 5 mm**

Production length: 4 m

Standard colours: black, grey, brown, beige

Corner versions: page 36–37

Installation instructions: page 38–39

For installation in asphalt, please ask for our technical advice.