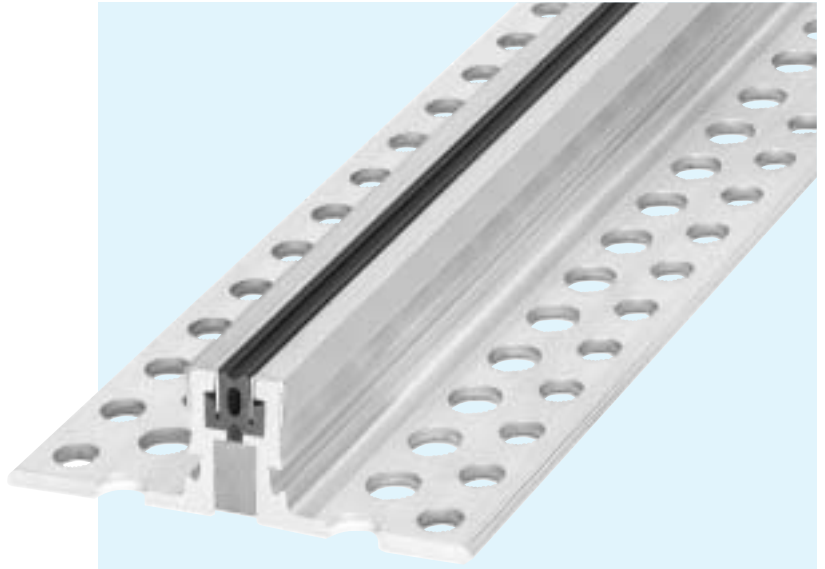


SERIES ESF 22/...NI WITH CAPPINGS MADE OF STAINLESS STEEL

FOR CONTRACTION JOINTS IN HEAVY DUTY FLOORS

EXPANSION JOINT SYSTEMS

- HIGH LOAD RESISTANCE
SOLID CONSTRUCTION
- SECURE FIXING IN SCREED
BY PERFORATED MOUNTING
BRACKETS
- POSITIVE CONNECTION OF
PRODUCTION LENGTH BY
MEANS OF SLIDE-IN ANCHORS



TECHNICAL DATA

Profile	Joint width max. mm	Total movement mm	Visible width of profile mm	Total width of profile mm	Installation height mm	Load capacity lorries (DIN 1072) kN	Load capacity fork lift trucks (DIN 1055) kN	Load capacity solid plastic tyres kg/mm width of wheel
ESF 22/18 NI	12	4 +/-2	22	110	18	600	130	11
ESF 22/30 NI	12	4 +/-2	22	110	30	600	130	11
ESF 22/45 NI	12	4 +/-2	22	110	45	600	130	11
ESF 22/60 NI	12	4 +/-2	22	110	60	600	130	11

MATERIAL

Aluminium side plates with perforated aluminium mounting brackets
The aluminium surfaces remaining visible after installation are provided with a rolled-on "U" shaped protection profile made of stainless steel
Flexible high quality elastomeric insert, long wearing, weather resistant, temperature resistant (-30°C to +120°C), extensively resistant to oils, acids and bitumen

Production length: 4 m
Standard colours: black, grey

Installation instructions: page 38

