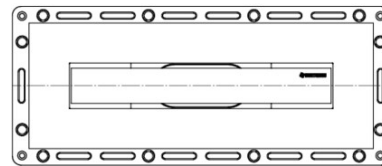
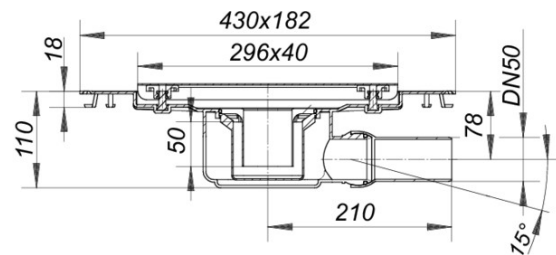


15. March 2012

linear drain TistoLine Standard 300

Product Number: **530264**
EAN: 4001636530264
Discount group: 5



Specification clause

side-outlet: DN 50 ball-joint adjustable 0 - 15
mit: Waterproofing flange with
fleece surface, 50 mm water
seal, trap insert easily removable
for cleaning, height adjustable
pedestals to level cover with
mosaic, tile, stone etc.,
tile trim jig
drain body: polypropylene