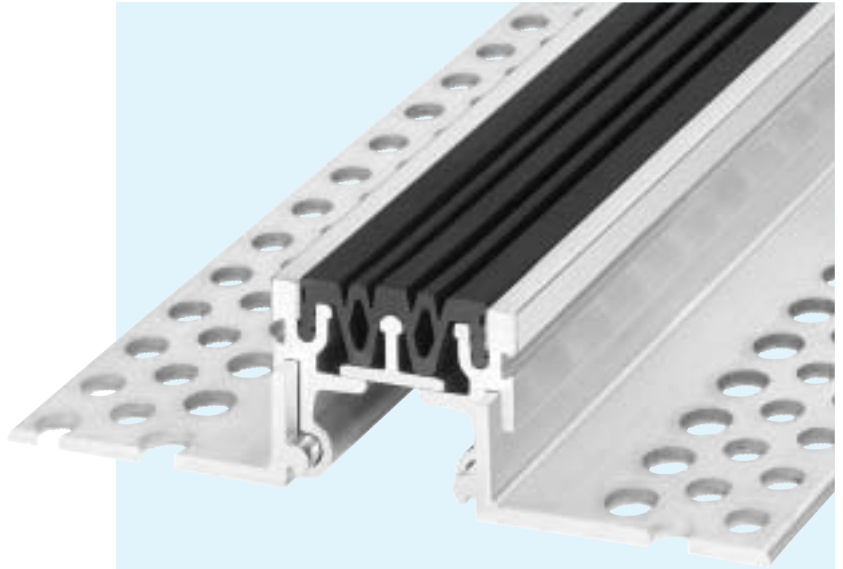


SERIES FP 60/... MS WITH CAPPINGS MADE OF BRASS SERIES FP 60/... NI WITH CAPPINGS MADE OF STAINLESS STEEL

EXPANSION JOINT SYSTEMS

- INSERT REPLACEABLE AT ANY TIME
- POSITIVE CONNECTION OF PRODUCTION LENGTHS BY STAGGERING THE JOINTS
- SOLID CONSTRUCTION
- MOVEMENT CAPACITY 20 MM
- FOR JOINT WIDTHS UP TO 50 MM



TECHNICAL DATA

| Profile | Joint width max. mm | Total movement mm | Visible width of profile mm | Total width of profile mm | Installation height mm | Load capacity private cars kN | *Load capacity lorries (DIN 1072) kN | *Load capacity fork lift trucks (DIN 1055) kN |
|----------------------|---------------------|-------------------|-----------------------------|---------------------------|------------------------|-------------------------------|--------------------------------------|---|
| FP 60/ 4500 MS or NI | 50 | 20 +/-10 | 60 | 192 | 45 | 25 | 300 | 35 |
| FP 60/ 5500 MS or NI | 50 | 20 +/-10 | 60 | 192 | 55 | 25 | 300 | 35 |
| FP 60/ 6500 MS or NI | 50 | 20 +/-10 | 60 | 192 | 65 | 25 | 300 | 35 |
| FP 60/ 8000 MS or NI | 50 | 20 +/-10 | 60 | 192 | 80 | 25 | 300 | 35 |
| FP 60/ 9000 MS or NI | 50 | 20 +/-10 | 60 | 192 | 90 | 25 | 300 | 35 |
| FP 60/10000 MS or NI | 50 | 20 +/-10 | 60 | 192 | 100 | 25 | 300 | 35 |

Larger installation heights on request

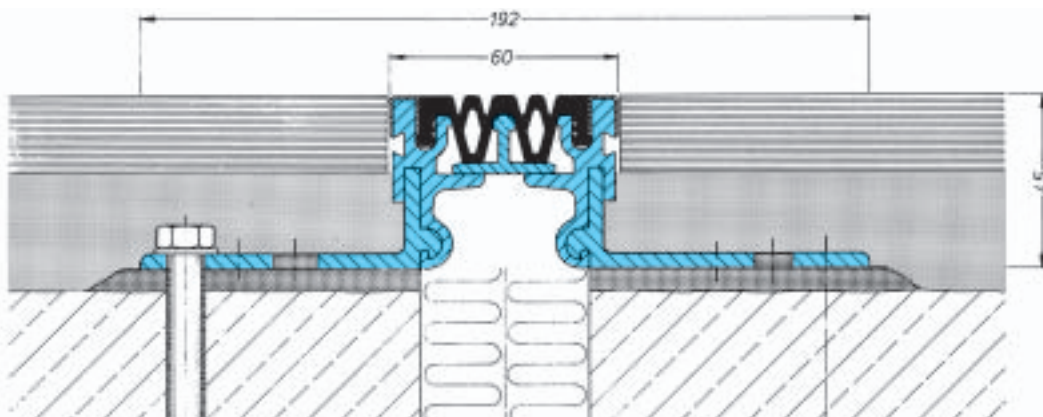
*not designed for permanent use

MATERIAL

Aluminium side plates with perforated mounting brackets. The parts remaining visible after installation have a rolled-on U-profile made of stainless steel (NI) or brass (MS). Flexible high quality elastomeric insert, long wearing, weather resistant, temperature resistant (-30°C to + 120°C), extensively resistant to oils, acids and bitumen.

Production length: 4 m
Standard colours: black
Corner versions: page 36–37
Installation instructions: page 39

For installation in asphalt, please ask for our technical advice.



FP 60/4500 Ni

Scale 1 : 2