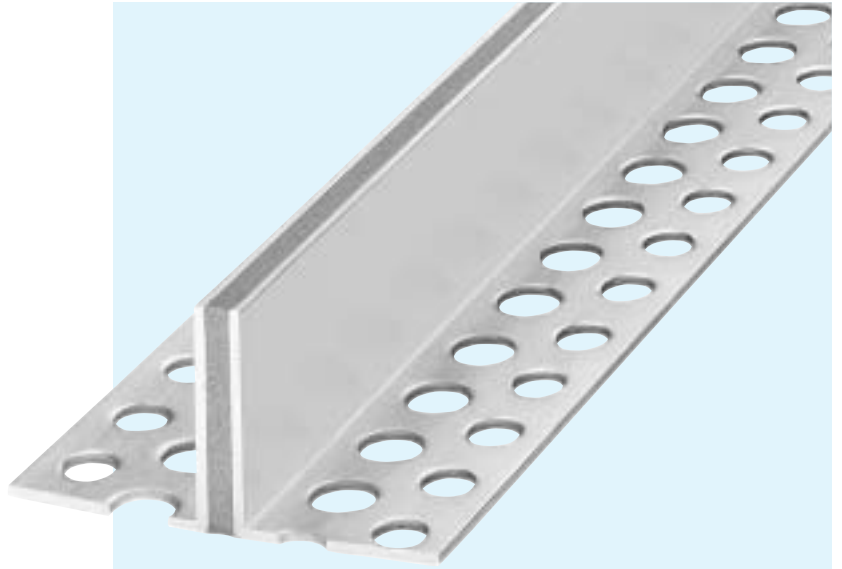


# SERIES ESF 9/...ZK

FOR FLOORS WITH CONTRACTION JOINTS AND SOUND INSULATION

## EXPANSION JOINT SYSTEMS

- **SECURE FIXING IN SCREED BY PERFORATED MOUNTING BRACKETS**
- **EXTRA SOUND INSULATION CAN BE OBTAINED BY INSTALLING INSULATION MATERIAL AS A JOINT FILLER**
- **VISIBLE WIDTH OF PROFILE 9 MM ONLY**



## TECHNICAL DATA

Profile	Joint width max. mm	Total movement mm	Visible width of profile mm	Total width of profile mm	Installation height mm	Load capacity lorries (DIN 1072) kN	Load capacity fork lift trucks (DIN 1055) kN
ESF 9/30 ZK	5	2 +/-1	9	85	30	300	35
ESF 9/40 ZK	5	2 +/-1	9	85	40	300	35
ESF 9/50 ZK	5	2 +/-1	9	85	50	300	35

### MATERIAL

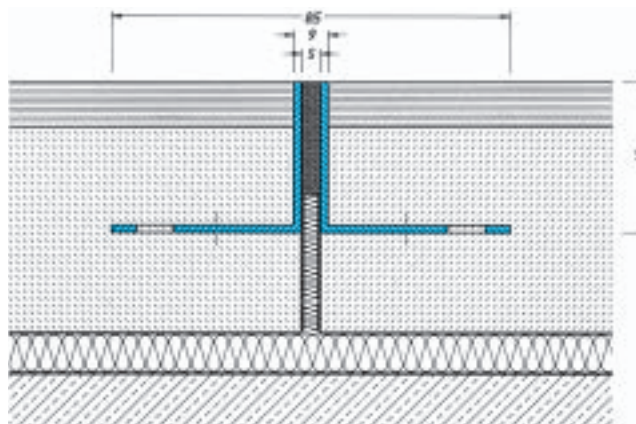
Aluminium side plates with perforated mounting brackets  
Flexible (cellular rubber) insert

Production length: 3 m  
Standard colour: grey, Special colour: black

Installation instructions: page 38

### Other heights and dimensions on request

The contraction joint profiles of Series ESF 9/... ZK are also available in stainless steel as **ESF 8/... ES** on request



ESF 9/40 ZK

Scale 1 : 2