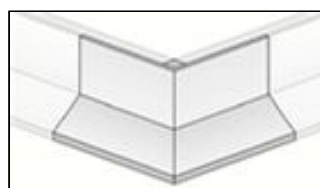
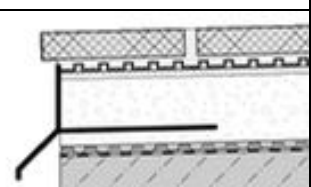
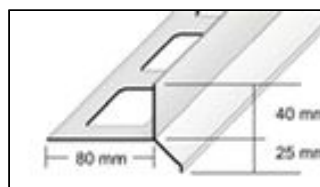
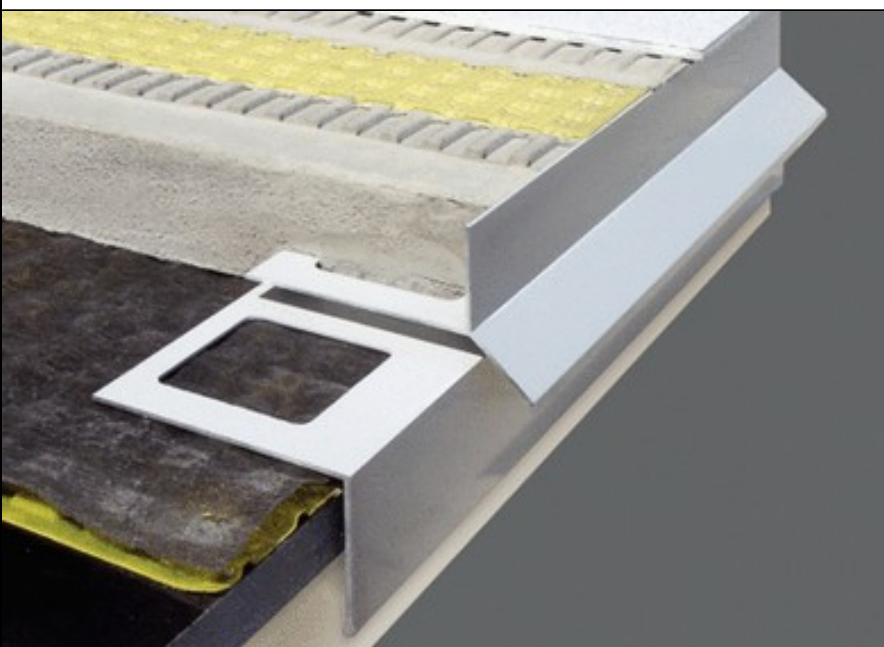
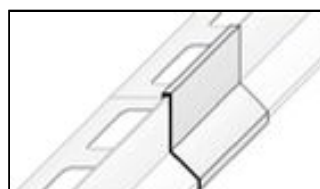


Balcony corner profile with gutter



Corner pieces



Connecting pieces

Application and function:

DURABAL balcony corner profiles with gutter are used for the open edges of balconies and terraces in a conventional mortar bed or in existing sloping screed.

The profile is embedded into the screed with its perforated square securing leg flush at the correct height. They can alternatively be adhered to the edge of the sloping screed with the help of a hydraulic-binding tile adhesive.

Used in conjunction with DURABASE DD the profile is installed so that it is embedded in the screed layer at the bottom and aligned flush at the right height. If the screed is then sealed with DURABASE CI the mortar bed should then be made about 5 mm lower. The CI mat is then laid right up to the profile. The narrow joint between the CI mat and the edge of the profile is then sealed with a neutrally binding silicon rubber.

DURABAL balcony corner profiles with gutter make for a clean edge and protect the edges from weather and disintegration. They cover the open edges of the DURABASE-DD mats or the front edge of the sloping screed.

Properties and usage:

The coating of the aluminium profiles is colour-fast and resistant to UV and weathering. The visible surfaces should be protected from abrasion and mortar residues. The usage of DURABAL with regard to chemical and mechanical resistance should be assessed in some special cases.

Material:

DURABAL gutter profiles consist of chromed or painted aluminium, available in four colours (beige, black, brown, grey). Profile bindings and corner pieces are also available to supplement the range.

Care and maintenance:

Regular cleaning not only makes for the attractive appearance of aluminium or stainless steel profiles, it also reduces deposits (corrosion). All cleaning agents should be free of hydrochloric acid (e.g. cement remover) and hydrofluoric acid. Aluminium balcony corner profiles should be cleaned when necessary using pH-neutral cleaning agents (pH 6-8) with no abrasive additives. The manufacturers' product recommendations for the cleaning agents should be followed at all costs.

Data sheet

Material	Height	Contact legs
Aluminium powder coated	65 mm	80 mm