

PROGETTO/

GRES FINE PORCELLANATO

NATURALE MAT - MAT - MATT - MATE

SPESSORE-THICKNESS-DICKE-EPAISSEUR-ESPESOR

8,5 MM

30x30

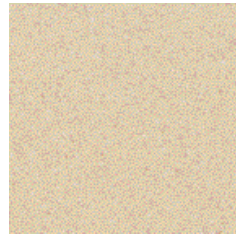
12"x12"



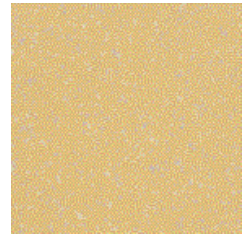
012514 NAT. AVORIO 2 GF



012509 NAT. TERRA 1 GF



012516 NAT. TERRA 2 GF



012521 NAT. GIALLO 3 GF



012493 NAT. AVORIO 2 TU



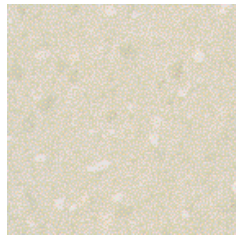
012488 NAT. TERRA 1 TU



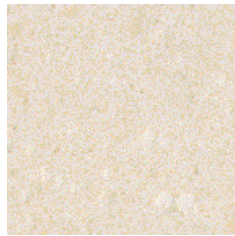
012495 NAT. TERRA 2 TU



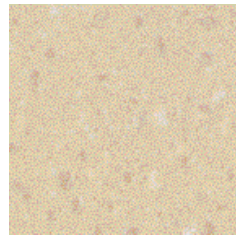
012500 NAT. GIALLO 3 TU



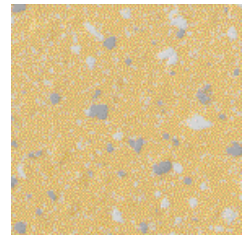
012535 NAT. AVORIO 2 MX



012530 NAT. TERRA 1 MX



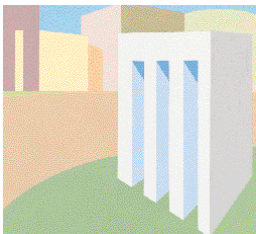
012537 NAT. TERRA 2 MX



012542 NAT. GIALLO 3 MX

LEVIGATO POLISHED - POLI - POLIERT - PULIDO

8 MM SPESSORE-THICKNESS-DICKE-EPAISSEUR-ESPESOR



012577 LEV. AVORIO 2 GF



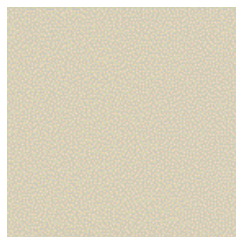
012572 LEV. TERRA 1 GF



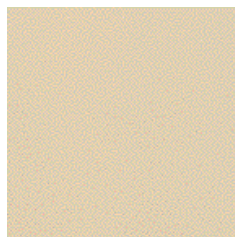
012579 LEV. TERRA 2 GF



012584 LEV. GIALLO 3 GF



012556 LEV. AVORIO 2 TU



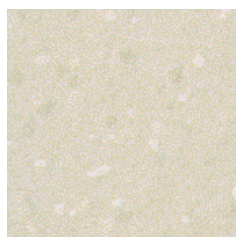
012551 LEV. TERRA 1 TU



012558 LEV. TERRA 2 TU



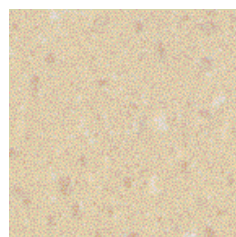
012563 LEV. GIALLO 3 TU



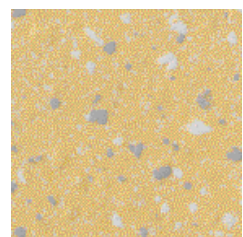
012598 LEV. AVORIO 2 MX



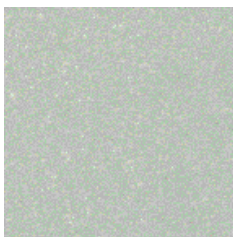
012593 LEV. TERRA 1 MX



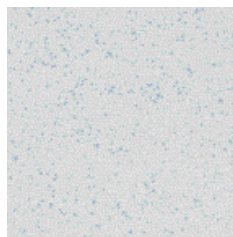
012600 LEV. TERRA 2 MX



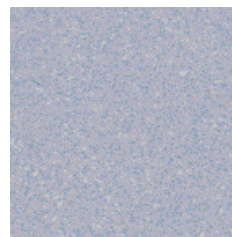
012605 LEV. GIALLO 3 MX



012517 NAT. VERDE 2 GF



012511 NAT. AZZURRO 1 GF



012519 NAT. AZZURRO 2 GF



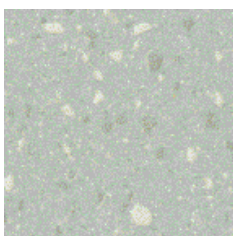
012496 NAT. VERDE 2 TU



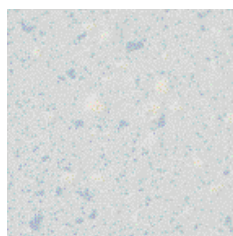
012490 NAT. AZZURRO 1 TU



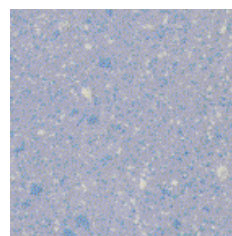
012498 NAT. AZZURRO 2 TU



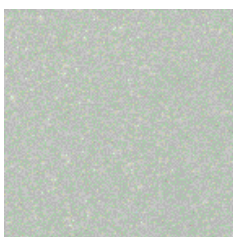
012538 NAT. VERDE 2 MX



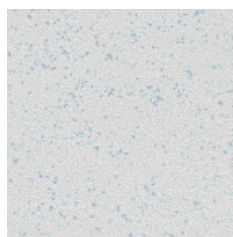
012532 NAT. AZZURRO 1 MX



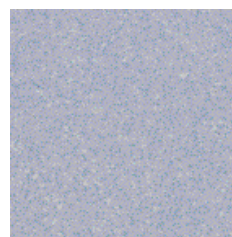
012540 NAT. AZZURRO 2 MX



012580 LEV. VERDE 2 GF



012574 LEV. AZZURRO 1 GF



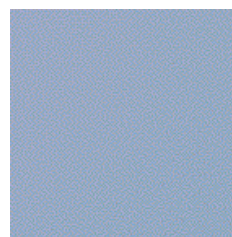
012582 LEV. AZZURRO 2 GF



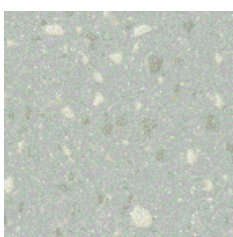
012559 LEV. VERDE 2 TU



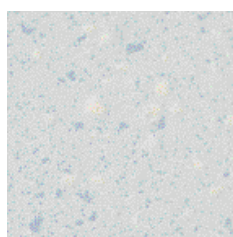
012553 LEV. AZZURRO 1 TU



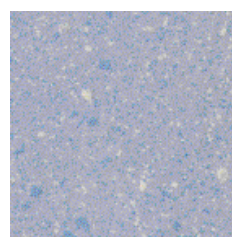
012561 LEV. AZZURRO 2 TU



012601 LEV. VERDE 2 MX



012595 LEV. AZZURRO 1 MX



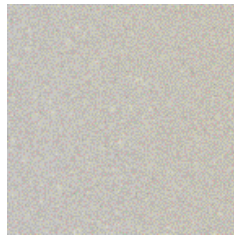
012603 LEV. AZZURRO 2 MX



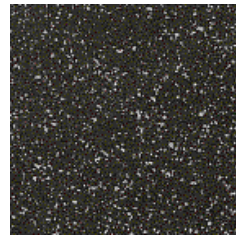
012507 NAT. BIANCO GF



012513 NAT. GRIGIO 1 GF



012520 NAT. GRIGIO 2 GF



012527 NAT. NERO GF



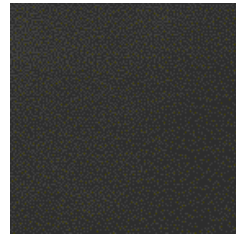
012486 NAT. BIANCO TU



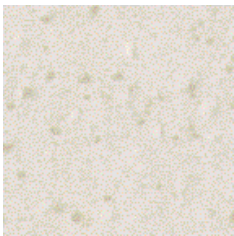
012492 NAT. GRIGIO 1 TU



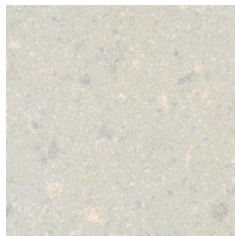
012499 NAT. GRIGIO 2 TU



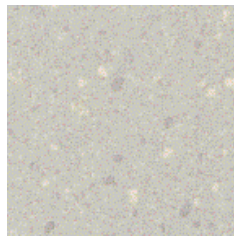
012506 NAT. NERO TU



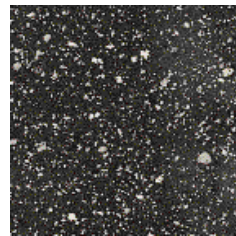
012528 NAT. BIANCO MX



012534 NAT. GRIGIO 1 MX



012541 NAT. GRIGIO 2 MX



012548 NAT. NERO MX



012570 LEV. BIANCO GF



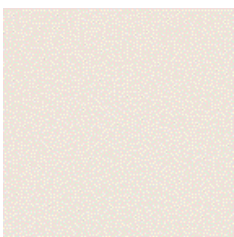
012576 LEV. GRIGIO 1 GF



012583 LEV. GRIGIO 2 GF



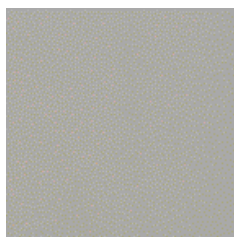
012590 LEV. NERO GF



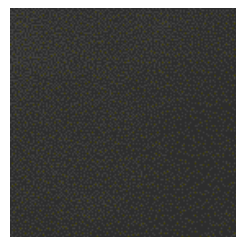
012549 LEV. BIANCO TU



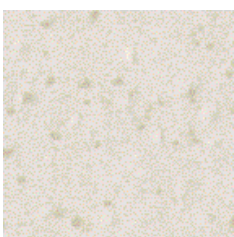
012555 LEV. GRIGIO 1 TU



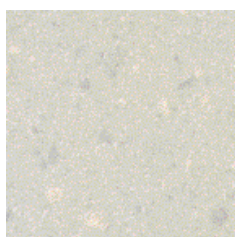
012562 LEV. GRIGIO 2 TU



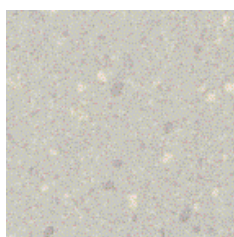
012569 LEV. NERO TU



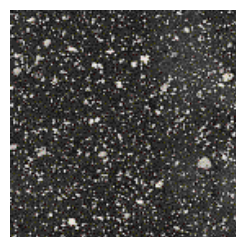
012591 LEV. BIANCO MX



012597 LEV. GRIGIO 1 MX



012604 LEV. GRIGIO 2 MX



012611 LEV. NERO MX

ETTO



PROGETTO/ GRES FINE PORCELLANATO

CARATTERISTICHE TECNICHE / TECHNICAL CHARACTERISTICS / CARACTERISTIQUES TECHNIQUES / TECHNISCHE EIGENSCHAFTEN / CARACTERÍSTICAS TÉCNICAS

Lastre in gres fine porcellanato non smaltato. Piastrelle di ceramica pressate a secco. Caratteristiche di qualità secondo i test di controllo previsti dalla norma E.N. 14411. Appendice G. Unglazed porcelain stoneware slabs. Dry-pressed ceramic tiles. Quality specifications, according to control tests of E.N. 14411. Appendix G. Dalles en grès cérame fin non émaillé. Carreaux céramiques pressés à sec. Caractéristiques de qualité d'après les essais de contrôle norme E.N. 14411. Appendice G. Nicht glasierte und vollständig gesinterte Feinsteinzeugplatten. Trocken gepresste Keramikfliesen. Qualitätseigenschaften nach Normen E.N. 14411. Anhang G. Planchas de gres porcelánico fino no esmaltado. Baldosas de cerámica prensadas en seco. Características de calidad según las Normas EN 14411. Apéndice G.	RIFERIMENTO NORMA Reference standard Référence Norme Standardwert Referencia Norma	VALORE DICHIARATO Declared value Valeur déclarée Erklärter Wert Valor declarado		METODO PROVA Test method Méthode d'essai Prüfmethode Valor declarado
Area S del prodotto (cm ²) Product area S (cm ²) Surface S du produit (cm ²) Oberfläche S des Produktes (cm ²) Area S del producto (cm ²)	S>410	naturale S>410	levigato S>410	
Lunghezza e larghezza: deviazione ammissibile, in %, della dimensione media di ogni piastrella dalla dim. di fabbricazione Length and width: admitted deviation, in %, of the average size of each tile from the production dimensions Longueur et largeur : marge de tolérance, en %, entre la dimension moyenne de chaque carreau et la dim. de fabrication Länge und Breite: zulässige Abweichung des Durchschnittmaßes jeder Fliese vom Herstellmaß in Prozenten Largo y ancho: desviación admisible, en %, del tamaño medio de cada baldosa a partir del tamaño de fabricación	± 0,60%	± 0,60%	± 0,60%	ISO 10545-2
Lunghezza e larghezza: deviazione ammissibile, in %, della dimensione media di ogni piastrella dalla media dei 10 campioni Length and width: admitted deviation, in %, of the average size of each tile from the average of 10 sample pieces Longueur et largeur : marge de tolérance, en %, entre la dimension moyenne de chaque carreau et la moyenne de 10 échantillons Länge und Breite: zulässige Abweichung des Durchschnittmaßes jeder Fliese vom Durchschnittsmaß der 10 Muster in Prozenten Largo y ancho: desviación admisible, en %, del tamaño medio de cada baldosa a partir de la media de las 10 muestras	± 0,50%	± 0,30%	± 0,15%	ISO 10545-2
Deviazione ammissibile, in percento, dello spessore medio di ogni piastrella dalla dimensione di fabbricazione Admitted deviation, in %, of the average thickness of each tile from the production dimensions marge de tolérance, en pourcentage, entre l'épaisseur moyenne de chaque carreau et la dimension de fabrication zulässige Abweichung der Durchschnittsdicke jeder Fliese vom Herstellmaß in Prozenten desviación admisible, en tanto por ciento, del grosor medio de cada baldosa a partir del tamaño de fabricación	± 5%	± 5%	± 5%	ISO 10545-2
Deviazione massima di rettilineità, in percento, in rapporto alle dimensioni di fabbricazione corrispondenti Maximum straightness deviation, in %, in relation to the corresponding production dimensions marge de tolérance de rectitude, en pourcentage, par rapport aux dimensions de fabrication correspondantes zulässige Höchstabweichung der Kantengeradheit im Verhältnis zu den entsprechenden Herstellmaßen in Prozenten desviación máxima de rectitud, en tanto por ciento, en relación con el tamaño de fabricación correspondiente	± 0,50%	± 0,40%	± 0,10%	ISO 10545-2
Deviazione massima di ortogonalità, in percento, in rapporto alle dimensioni di fabbricazione corrispondenti Maximum right-angle deviation, in %, in relation to the corresponding production dimensions marge de tolérance d'angularité, en pourcentage, par rapport aux dimensions de fabrication Höchstabweichung der Rechtwinkligkeit im Verhältnis zu den entsprechenden Herstellmaßen in Prozenten desviación máxima de la ortogonalidad, en tanto por ciento, en relación con el tamaño de fabricación correspondiente	± 0,60%	± 0,40%	± 0,20%	ISO 10545-2
Planarità (curvatura del centro, dello spigolo e svergolamento) - Flatness (curving in the middle, corner and warping) Planéité (courbure centrale, de l'arête et gauchissement) - Ebenföchigkeit (Krümmung der Mitte, der Kante und Verwindung) - Planitud (curvatura del centro, de la arista y abarquillamiento)	± 0,50%	± 0,35%	± 0,20%	ISO 10545-2
Qualità della superficie - Surface quality - Qualité de la surface - Oberflächenqualität - Calidad de la superficie	E ≤ 0,5%	Conforme-Conforming Conforme-Erfüllt-Conforme		ISO 10545-2
Massa d'acqua assorbita, in percento - Amount of water absorbed, in percentage - Masse d'eau absorbée, en pourcentage Aufgenommene Wassermenge in Prozenten - Masa de agua absorbida, en tanto por ciento	E ≤ 0,5%	E ≤ 0,1%	E ≤ 0,1%	ISO 10545-3
Forza di rottura in N (sp. ≥ 7,5 mm) - Breaking strength in N (thickness ≥ 7,5 mm) - Force de rupture en N (ép. ≥ 7,5 mm) - Bruchlast in N (Dicke ≥ 7,5 mm) - Fuerza de rotura en N (gr. ≥ 7,5 mm)	1300 min	1300	-	ISO 10545-4
Forza di rottura in N (sp. < 7,5 mm) - Breaking strength in N (thickness < 7,5 mm) - Force de rupture en N (ép. < 7,5 mm) - Bruchlast in N (Dicke < 7,5 mm) - Fuerza de rotura en N (gr. < 7,5 mm)	700	-	1300	ISO 10545-4
Resistenza a flessione in N/mm ² - Bending strength in N/mm ² - Résistance à la flexion en N/mm ² - Biegefestigkeit in N/mm ² - Resistencia a la flexión en N/mm ²	35 min	> 45	> 45	ISO 10545-4
Resistenza all'abrasione profonda delle piastrelle non smaltate Resistance to deep abrasion of unglazed tiles Résistance à l'abrasion profonde des carreaux non émaillés Tiefenabriebfestigkeit unglasierter Fliesen Resistencia a la abrasión profunda de las baldosas sin esmaltar	< 175 mm ³	< 150	< 150	ISO 10545-6
Resistenza agli sbalzi termici - Thermal shock resistance - Résistance aux écarts thermiques Temperaturwechselbeständigkeit - Resistencia a los choques térmicos	-	Resiste Resistant - Résiste Fleckenfest - Resiste		ISO 10545-9
Resistenza al gelo - Frost resistance - Résistance au gel - Frostbeständigkeit - Resistencia a la helada	Richiesta - Required Requis - Gefordert Requerida	Resiste Resistant - Résiste Fleckenfest - Resiste		ISO 10545-12
Resistenza a alte concentrazioni di acidi ed alcali Resistance to high concentrations of acids and alkali Résistance à de hautes concentrations d'acides et bases Beständigkeit gegen stark konzentrierte Säuren und Laugen Resistencia a altas concentraciones de ácidos y álcalis	Come dichiarato dal produttore See manufacturer's declaration Selon déclaration du producteur entsprechend der Herstellangaben tal como Declara el fabricante	UHA	UHA	ISO 10545-13
Resistenza a basse concentrazioni di acidi ed alcali Resistance to low concentrations of acids and alkali Résistance à de basses concentrations d'acides et bases Beständigkeit gegen schwach konzentrierte Säuren und Laugen Resistencia a bajas concentraciones de ácidos y álcalis	Come dichiarato dal produttore See manufacturer's declaration Selon déclaration du producteur entsprechend der Herstellangaben tal como Declara el fabricante	ULA	ULA	ISO 10545-13
Resistenza ai prodotti chimici di uso domestico ed additivi per piscina Resistance to domestic chemicals and additives for swimming pools Résistance aux prod. Chimiques d'usage domestique et additifs pour piscines Beständigkeit gegen chemische Haushaltsreiniger und Zusatzstoffe für Schwimmbäder Resistencia a los productos químicos de uso doméstico y a los aditivos para piscina	UB min	UA	UA	ISO 10545-13
Coefficiente di attrito per piastrelle da pavimento Coefficient of friction for floor tiles Coefficient de friction de carreaux pour sol Friktionskoeffizient für bodentfliesen Coefficiente de fricción por azulejos de pavimento		R9	n.a.	DIN 51130 DIN 51097 BCR DPR 503 del 24/07/96 ASTM C 1028

N.A. = grandezza non applicabile - parameters Not Applicable - grandeur non applicable - nicht anwendbare Größe - tamaño no aplicable



放射性水平 A

